



## Rabbit Anti-Phospho-Cyclin B1 (Ser147) antibody

SL3122R

<b>Product Name:</b>	Phospho-Cyclin B1 (Ser147)
<b>Chinese Name:</b>	磷酸化周期素B1抗体
<b>Alias:</b>	Cyclin B1 (phospho S147); Cyclin B1 (phospho-Ser147); p-Cyclin B1 (S147); p-Cyclin B1 (Ser147); p-Cyclin B1 (phospho S147); CCNB 1; CCNB; CCNB1; CCNB1_HUMAN; G2 mitotic specific cyclin B1; G2/mitotic-specific cyclin-B1.
<b>Organism Species:</b>	Rabbit
<b>Clonality:</b>	Polyclonal
<b>React Species:</b>	Human,Mouse,Rat,Chicken,Dog,Pig,Cow,Horse,Rabbit,Guinea Pig,
<b>Applications:</b>	WB=1:500-2000ELISA=1:500-1000IHC-P=1:400-800IHC-F=1:400-800Flow-Cyt=1µg/TestIF=1:100-500 (Paraffin sections need antigen repair) not yet tested in other applications. optimal dilutions/concentrations should be determined by the end user.
<b>Molecular weight:</b>	48kDa
<b>Cellular localization:</b>	The nucleuscytoplasmic
<b>Form:</b>	Lyophilized or Liquid
<b>Concentration:</b>	1mg/ml
<b>immunogen:</b>	KLH conjugated Synthesised phosphopeptide derived from human Cyclin B1 around the phosphorylation site of Ser147:AF(p-S)DV
<b>Lsotype:</b>	IgG
<b>Purification:</b>	affinity purified by Protein A
<b>Storage Buffer:</b>	0.01M TBS(pH7.4) with 1% BSA, 0.03% Proclin300 and 50% Glycerol.
<b>Storage:</b>	Store at -20 °C for one year. Avoid repeated freeze/thaw cycles. The lyophilized antibody is stable at room temperature for at least one month and for greater than a year when kept at -20°C. When reconstituted in sterile pH 7.4 0.01M PBS or diluent of antibody the antibody is stable for at least two weeks at 2-4 °C.
<b>PubMed:</b>	<a href="#">PubMed</a>
<b>Product Detail:</b>	The protein encoded by this gene is a regulatory protein involved in mitosis. The gene product complexes with p34(cdc2) to form the maturation-promoting factor (MPF). Two alternative transcripts have been found, a constitutively expressed transcript and a cell

cycle-regulated transcript, that is expressed predominantly during G2/M phase. The different transcripts result from the use of alternate transcription initiation sites. [provided by RefSeq, Jul 2008].

**Function:**

Essential for the control of the cell cycle at the G2/M (mitosis) transition.

**Subunit:**

Interacts with the CDC2 protein kinase to form a serine/threonine kinase holoenzyme complex also known as maturation promoting factor (MPF). The cyclin subunit imparts substrate specificity to the complex. Binds HEI10. Interacts with catalytically active RALBP1 and CDC2 during mitosis to form an endocytotic complex during interphase. Interacts with CCNF; interaction is required for nuclear localization.

**Subcellular Location:**

Cytoplasm. Nucleus. Cytoplasm, cytoskeleton, centrosome.

**Post-translational modifications:**

Ubiquitinated by the SCF(NIPA) complex during interphase, leading to its destruction. Not ubiquitinated during G2/M phases.

Phosphorylated by PLK1 at Ser-133 on centrosomes during prophase: phosphorylation by PLK1 does not cause nuclear import. Phosphorylation at Ser-147 was also reported to be mediated by PLK1 but Ser-133 seems to be the primary phosphorylation site

**Similarity:**

Belongs to the cyclin family. Cyclin AB subfamily.

**SWISS:**

P14635

**Gene ID:**

891

**Database links:**

[Entrez Gene: 891](#)Human

[Entrez Gene: 268697](#)Mouse

[Entrez Gene: 25203](#)Rat

[Omim: 123836](#)Human

[SwissProt: P14635](#)Human

[SwissProt: P24860](#)Mouse

[SwissProt: P30277](#)Rat

[Unigene: 23960](#)Human

[Unigene: 260114](#)Mouse

[Unigene: 380027](#)Mouse

[Unigene: 482545](#)Mouse

[Unigene: 9232](#)Rat

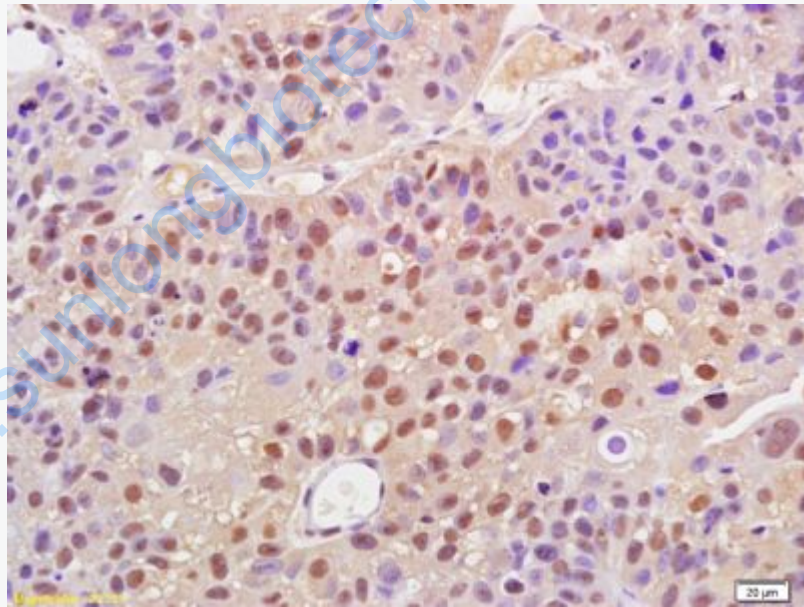
**Important Note:**

This product as supplied is intended for research use only, not for use in human, therapeutic or diagnostic applications.

主要出现在G2期。Cyclin B是细胞周期调节必不可少的条件。

细胞周期素B1是细胞周期调节因子, 它的异常表达将导致细胞周期发生紊乱, 致使Tumour形成.

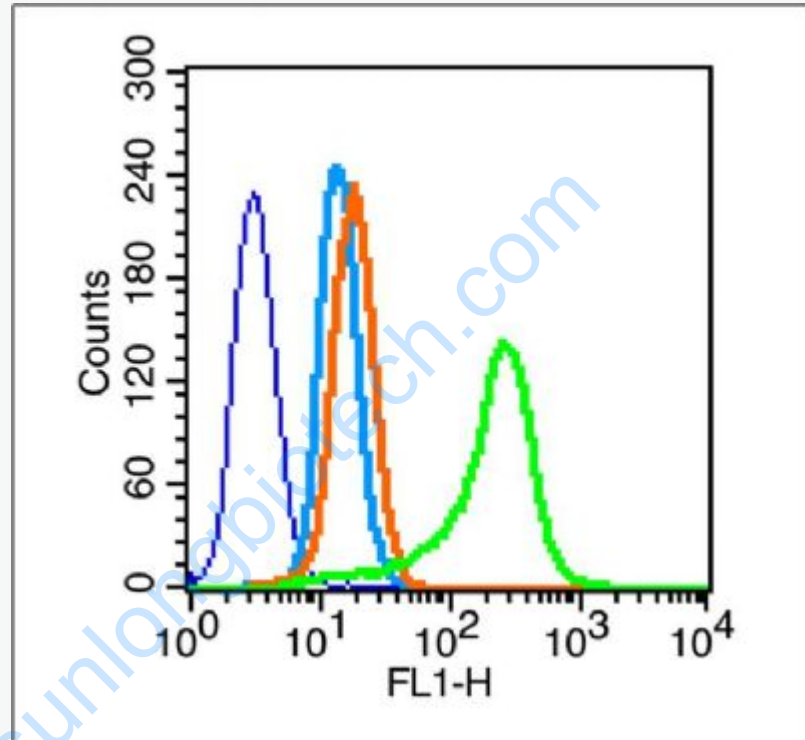
**Picture:**



Tissue/cell: human bladder carcinoma; 4% Paraformaldehyde-fixed and paraffin-embedded;

Antigen retrieval: citrate buffer ( 0.01M, pH 6.0 ), Boiling bathing for 15min; Block endogenous peroxidase by 3% Hydrogen peroxide for 30min; Blocking buffer (normal goat serum,C-0005) at 37°C for 20 min;

Incubation: Anti-Phospho-Cyclin B1(Ser147) Polyclonal Antibody,  
Unconjugated(SL3122R) 1:200, overnight at 4°C, followed by conjugation to the  
secondary antibody(SP-0023) and DAB(C-0010) staining



Blank control (blue line): A549 (blue).

Primary Antibody (green line): Rabbit Anti-Phospho-Cyclin B1 (Ser147)  
antibody(SL3122R)

Dilution: 1µg /10<sup>6</sup> cells;

Isotype Control Antibody (orange line): Rabbit IgG .

Secondary Antibody (white blue line): F(ab')<sub>2</sub> fragment goat anti-rabbit IgG-FITC

Dilution: 1µg /test.

Protocol

The cells were fixed with 2% paraformaldehyde (10 min) and then permeabilized

with 0.1% PBS-Tween for 20 min at room temperature. Cells stained with Primary Antibody for 30 min at room temperature. The cells were then incubated in 1 X PBS/2%BSA/10% goat serum to block non-specific protein-protein interactions followed by the antibody for 15 min at room temperature. The secondary antibody used for 40 min at room temperature. Acquisition of 20,000 events was performed.

[www.sunlongbiotech.com](http://www.sunlongbiotech.com)