



Rabbit Anti-phospho-Cyclin E1 (Thr77) antibody

SL3125R

Product Name:	phospho-Cyclin E1 (Thr77)
Chinese Name:	磷酸化周期素E1抗体
Alias:	Cyclin E1 (phospho-Thr77); Cyclin E1 (phospho-T77); CCNE 1; CCNE; CCNE1; Cyclin Es; Cyclin Et; CyclinE; G1/S specific cyclin E; G1/S-specific cyclin-E1; CCNE1_HUMAN; pCCNE1.
Organism Species:	Rabbit
Clonality:	Polyclonal
React Species:	Human,Mouse,Rat,Chicken,Dog,Pig,Cow,Horse,Rabbit,
Applications:	WB=1:500-2000ELISA=1:500-1000Flow-Cyt=3μg /Test not yet tested in other applications. optimal dilutions/concentrations should be determined by the end user.
Molecular weight:	47kDa
Cellular localization:	The nucleus
Form:	Lyophilized or Liquid
Concentration:	1mg/ml
immunogen:	KLH conjugated Synthesised phosphopeptide derived from human Cyclin E around the phosphorylation site of Thr77:IP(p-T)PD
Lsotype:	IgG
Purification:	affinity purified by Protein A
Storage Buffer:	0.01M TBS(pH7.4) with 1% BSA, 0.03% Proclin300 and 50% Glycerol.
Storage:	Store at -20 °C for one year. Avoid repeated freeze/thaw cycles. The lyophilized antibody is stable at room temperature for at least one month and for greater than a year when kept at -20°C. When reconstituted in sterile pH 7.4 0.01M PBS or diluent of antibody the antibody is stable for at least two weeks at 2-4 °C.
PubMed:	PubMed
Product Detail:	Cyclin E is a regulatory subunit of Cdk2 and controls G1 / S transition during the mammalian cell cycle. Multiple isoforms of Cyclin E are only expressed in tumors but not in normal tissue, suggesting a post transcriptional regulation of Cyclin E. In vitro analyses indicated that these truncated variant isoforms of Cyclin E are able to

phosphorylate histone H1. Alterations in the Cyclin E protein have been implicated as indicators of worse prognosis in various cancers.

Function:

Essential for the control of the cell cycle at the G1/S (start) transition.

Subunit:

Interacts with a member of the CDK2/CDK protein kinases to form a serine/threonine kinase holoenzyme complex. The cyclin subunit imparts substrate specificity to the complex. Found in a complex with CDK2, CABLES1 and CCNA1 (By similarity). Part of a complex consisting of UHRF2, CDK2 and CCNE1. Interacts directly with UHRF2; the interaction ubiquitinates CCNE1 and appears to occur independently of CCNE1 phosphorylation.

Subcellular Location:

Nucleus.

Tissue Specificity:

Highly expressed in testis and placenta. Low levels in bronchial epithelial cells.

Post-translational modifications:

Phosphorylation of Thr-395 by GSK3 and of Ser-399 by CDK2 accelerates degradation via the ubiquitin proteasome pathway. Phosphorylated upon DNA damage, probably by ATM or ATR.

Ubiquitinated by UHRF2; appears to occur independently of phosphorylation.

Similarity:

Belongs to the cyclin family. Cyclin E subfamily.

SWISS:

P24864

Gene ID:

898

Database links:

[Entrez Gene: 898](#)Human

[Entrez Gene: 12447](#)Mouse

[Entrez Gene: 25729](#)Rat

[Omim: 123837](#)Human

[SwissProt: P24864](#)Human

[SwissProt: Q61457](#)Mouse

[SwissProt: P39949](#)Rat

[Unigene: 244723](#)Human

[Unigene: 16110](#)Mouse

[Unigene: 15455](#)Rat

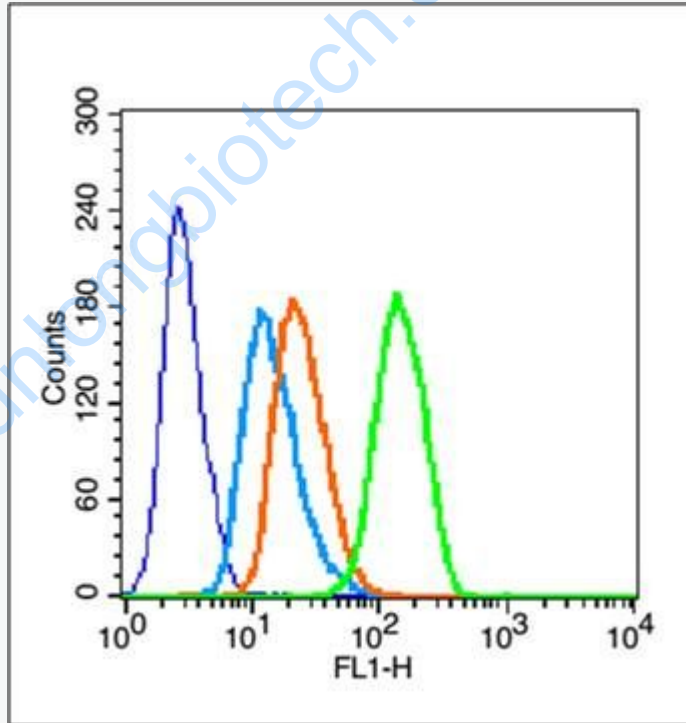
Important Note:

This product as supplied is intended for research use only, not for use in human, therapeutic or diagnostic applications.

????细胞周期素E是调控细胞G-

1→S期转变的关键因素。由于在多种Tumour中的不适当表达,细胞周期素E现在已明确为原癌基因。

Picture:



Blank control (blue line): MCF7(fixed with 70% ethanol (Overnight at 4°C) and then permeabilized with 90% ice-cold methanol for 30 min on ice)

Primary Antibody (green line): Rabbit Anti-phospho-Cyclin E1 (Thr77) antibody (SL3125R),Dilution: 3µg /10⁶ cells.

Isotype Control Antibody (orange line): Rabbit IgG .

Secondary Antibody (white blue line): Goat anti-rabbit IgG-FITC, Dilution: 1 μ g /test.

The cells were . Cells stained with Primary Antibody for 30 min at room temperature. The cells were then incubated in 1 X PBS/2%BSA/10% goat serum to block non-specific protein-protein interactions followed by the antibody for 15 min at room temperature. The secondary antibody used for 40 min at room temperature. Acquisition of 20,000 events was performed.

www.sunlongbiotech.com