



## Rabbit Anti-Phospho-PAK6 (Ser560) antibody

SL3314R

<b>Product Name:</b>	Phospho-PAK6 (Ser560)
<b>Chinese Name:</b>	磷酸化p21激活激酶6抗体
<b>Alias:</b>	Phospho-PAK6(Ser560); PAK4 + PAK5 + PAK6 (phospho S474 + S602 + S560); CDKN1A activated kinase 6; Serine/threonine-protein kinase PAK 6; p21 activated protein kinase 6; p21 protein (Cdc42/Rac)-activated kinase 6; p21(CDKN1A) activated kinase 6; p21-ACTIVATED KINASE 6; p21activated kinase 6; PAK 5; PAK 6; PAK5; Serine threonine protein kinase PAK 6; Serine/threonine protein kinase PAK 6; Serine/threonine protein kinase PAK6; EC 2.7.1.37; PAK-5; PAK-6; Pak6; PAK6_HUMAN.
文献引用 PubMed :	<p><b>Specific References(1)</b> SL3314R has been referenced in 1 publications.</p> <p><b>[IF=6.59]</b>Choi, Sik-Won, et al. "Repositioning Potential of PAK4 to Osteoclastic Bone Resorption." Journal of Bone and Mineral Research (2015).<b>WB;Mouse.</b></p> <p style="text-align: right;">PubMed:25640698</p>
<b>Organism Species:</b>	Rabbit
<b>Clonality:</b>	Polyclonal
<b>React Species:</b>	Human,Mouse,Rat,Chicken,Dog,Pig,Cow,Horse,Rabbit,Sheep,
<b>Applications:</b>	WB=1:500-2000ELISA=1:500-1000 not yet tested in other applications. optimal dilutions/concentrations should be determined by the end user.
<b>Molecular weight:</b>	75kDa
<b>Cellular localization:</b>	cytoplasmic
<b>Form:</b>	Lyophilized or Liquid
<b>Concentration:</b>	1mg/ml
<b>immunogen:</b>	KLH conjugated Synthesised phosphopeptide derived from human PAK6 around the phosphorylation site of Ser560:RK(p-S)LV
<b>Lsotype:</b>	IgG

<b>Purification:</b>	affinity purified by Protein A
<b>Storage Buffer:</b>	0.01M TBS(pH7.4) with 1% BSA, 0.03% Proclin300 and 50% Glycerol.
<b>Storage:</b>	Store at -20 °C for one year. Avoid repeated freeze/thaw cycles. The lyophilized antibody is stable at room temperature for at least one month and for greater than a year when kept at -20°C. When reconstituted in sterile pH 7.4 0.01M PBS or diluent of antibody the antibody is stable for at least two weeks at 2-4 °C.
<b>PubMed:</b>	<a href="#">PubMed</a>
<b>Product Detail:</b>	<p>This gene encodes a protein that shares a high degree of sequence similarity with p21-activated kinase (PAK) family members. The proteins of this family are Rac/Cdc42-associated Ste20-like Ser/Thr protein kinases, characterized by a highly conserved amino-terminal Cdc42/Rac interactive binding (CRIB) domain and a carboxyl-terminal kinase domain. PAK kinases are implicated in the regulation of a number of cellular processes, including cytoskeleton rearrangement, apoptosis and the MAP kinase signaling pathway. The protein encoded by this gene was found to interact with androgen receptor (AR), which is a steroid hormone-dependent transcription factor that is important for male sexual differentiation and development. The p21-activated protein kinase 6 gene was found to be highly expressed in testis and prostate tissues and the encoded protein was shown to cotranslocate into the nucleus with AR in response to androgen.</p> <p><b>Function:</b> Serine/threonine protein kinase that plays a role in the regulation of gene transcription. The kinase activity is induced by various effectors including AR or MAP2K6/MAPKK6. Phosphorylates the DNA-binding domain of androgen receptor/AR and thereby inhibits AR-mediated transcription. Inhibits also ESR1-mediated transcription. May play a role in cytoskeleton regulation by interacting with IQGAP1. May protect cells from apoptosis through phosphorylation of BAD.</p> <p><b>Subunit:</b> Interacts tightly with GTP-bound but not GDP-bound CDC42/p21 and RAC1. Interacts with the androgen receptor AR and the estrogen receptor ESR1. Interacts with IQGAP1 and PPM1B.</p> <p><b>Subcellular Location:</b> Cytoplasm. Nucleus. Note=Cotranslocates into nucleus with AR in response to androgen induction.</p> <p><b>Tissue Specificity:</b> Selectively expressed in brain and testis, with lower levels in multiple tissues including prostate and breast.</p> <p><b>Post-translational modifications:</b> Autophosphorylated. Phosphorylated by MAP2K6//MAPKK6, leading to PAK6 activation.</p> <p><b>Similarity:</b></p>

Belongs to the protein kinase superfamily. STE Ser/Thr protein kinase family. STE20 subfamily.  
Contains 1 CRIB domain.

**SWISS:**  
Q9NQU5

**Gene ID:**  
56924

**Database links:**

[Entrez Gene: 56924](#) Human

[Omim: 608110](#) Human

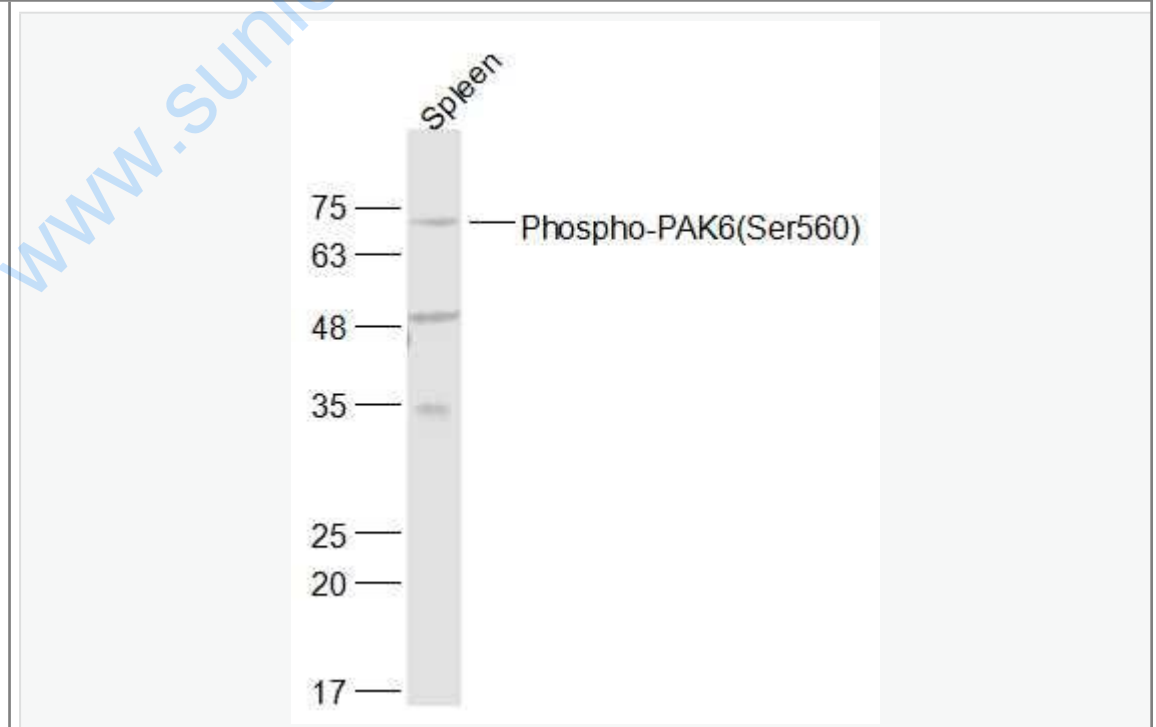
[SwissProt: Q9NQU5](#) Human

[Unigene: 513645](#) Human

**Important Note:**

This product as supplied is intended for research use only, not for use in human, therapeutic or diagnostic applications.

**Picture:**



Sample:

Spleen (Mouse) Lysate at 40 ug

Primary: Anti-Phospho-PAK6(Ser560) (SL3314R) at 1/300 dilution

Secondary: IRDye800CW Goat Anti-Rabbit IgG at 1/20000 dilution

Predicted band size: 75 kD

Observed band size: 73 kD

[www.sunlongbiotech.com](http://www.sunlongbiotech.com)