



Rabbit Anti-Phospho-PLC beta3 (Ser1105) antibody

SL3341R

Product Name:	Phospho-PLC beta3 (Ser1105)
Chinese Name:	磷酸化磷脂酶Cβ3抗体
Alias:	Phospholipase C beta 3; Phospholipase C beta 3 (phosphatidylinositol specific); PLC beta 3; PLCB3 antibody 1 phosphatidylinositol 4 5 bisphosphate phosphodiesterase beta 3; Phosphoinositide phospholipase C; PLCB3_HUMAN.
Organism Species:	Rabbit
Clonality:	Polyclonal
React Species:	Human,Mouse,Rat,Dog,Pig,Cow,Horse,
Applications:	WB=1:500-2000ELISA=1:500-1000IHC-P=1:400-800IHC-F=1:400-800Flow-Cyt=1μg/TestIF=1:100-500 (Paraffin sections need antigen repair) not yet tested in other applications. optimal dilutions/concentrations should be determined by the end user.
Molecular weight:	136kDa
Cellular localization:	The cell membrane
Form:	Lyophilized or Liquid
Concentration:	1mg/ml
immunogen:	KLH conjugated synthesised phosphopeptide derived from human PLC beta3 around the phosphorylation site of Ser1105:N(p-S)ISE
Lsotype:	IgG
Purification:	affinity purified by Protein A
Storage Buffer:	0.01M TBS(pH7.4) with 1% BSA, 0.03% Proclin300 and 50% Glycerol.
Storage:	Store at -20 °C for one year. Avoid repeated freeze/thaw cycles. The lyophilized antibody is stable at room temperature for at least one month and for greater than a year when kept at -20°C. When reconstituted in sterile pH 7.4 0.01M PBS or diluent of antibody the antibody is stable for at least two weeks at 2-4 °C.
PubMed:	PubMed
Product Detail:	Phospholipase C is a key enzyme in phosphatidylinositol (PIP2) metabolism and lipid

signaling pathways. The Phospholipase C family consists of 13 isozymes split between six subfamilies. Phospholipase C beta is activated by G protein subunits.

Function:

The production of the second messenger molecules diacylglycerol (DAG) and inositol 1,4,5-trisphosphate (IP3) is mediated by activated phosphatidylinositol-specific phospholipase C enzymes.

Subunit:

Interacts with SHANK2. Interacts with LPAR2.

Subcellular Location:

Membrane; Peripheral membrane protein.

Similarity:

Contains 1 C2 domain.
Contains 1 PI-PLC X-box domain.
Contains 1 PI-PLC Y-box domain.

SWISS:

Q01970

Gene ID:

5331

Database links:

[Entrez Gene: 5331](#)Human

[Entrez Gene: 18797](#)Mouse

[Entrez Gene: 29322](#)Rat

[Omim: 600230](#)Human

[SwissProt:](#)Human

[SwissProt: P51432](#)Mouse

[SwissProt: Q99JE6](#)Rat

[Unigene: 523761](#)Human

[Unigene: 591953](#)Human

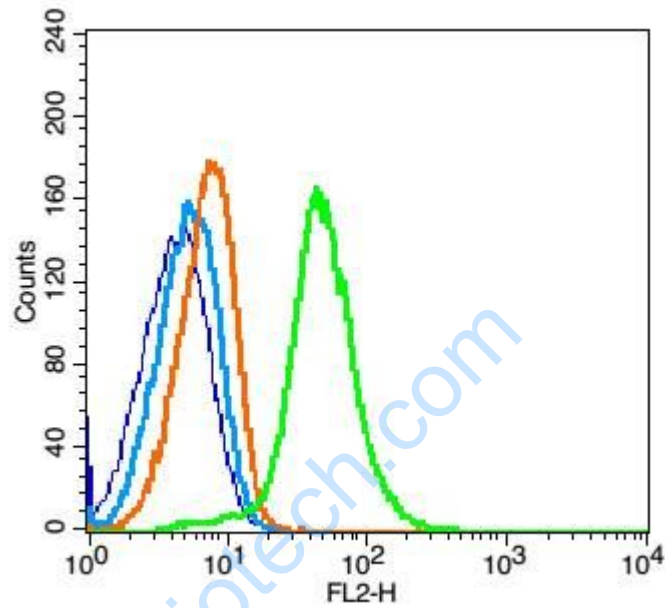
[Unigene: 273204](#)Mouse

[Unigene: 16983](#)Rat

Important Note:

This product as supplied is intended for research use only, not for use in human, therapeutic or diagnostic applications.

Picture:



Blank control(blue): RAJI(fixed with 2% paraformaldehyde (10 min)).

Primary Antibody:Rabbit Anti-Phospho-PLC beta3 (Ser1105) antibody(SL3341R),

Dilution: 1 μ g in 100 μ L 1X PBS containing 0.5% BSA;

Isotype Control Antibody: Rabbit IgG(orange) ,used under the same conditions);

Secondary Antibody: Goat anti-rabbit IgG-PE(white blue), Dilution: 1:200 in 1 X PBS containing 0.5% BSA.