



Rabbit Anti-Phospho-A Raf (Tyr301 + Tyr302) antibody

SL3421R

Product Name:	Phospho-A Raf (Tyr301 + Tyr302)
Chinese Name:	磷酸化A-Raf抗体
Alias:	A RAF (phospho Y301 + Y302); p-A RAF (phospho Y301 + Y302); A raf 1; A Raf proto oncogene serine/threonine protein kinase; ARAF 1; ARAF; ARaf proto oncogene serine/threonine protein kinase; ARAF1; Oncogene Araf1; Oncogene PKS2; PKS 2; PKS; PKS2; Proto oncogene Pks; RAFA 1; RAFA1; Ras binding protein DA Raf; v raf murine sarcoma 3611 viral oncogene homolog; v raf murine sarcoma 3611 viral oncogene homolog 1; v raf oncogene homolog 1 (murine sarcoma 3611 virus); ARAF HUMAN.
Organism Species:	Rabbit
Clonality:	Polyclonal
React Species:	Human,Mouse,Rat,Dog,Pig,Cow,Horse,Rabbit,Sheep,
Applications:	WB=1:500-2000ELISA=1:500-1000IHC-P=1:400-800IHC-F=1:400-800IF=1:100-500 (Paraffin sections need antigen repair) not yet tested in other applications. optimal dilutions/concentrations should be determined by the end user.
Molecular weight:	67kDa
Cellular localization:	cytoplasmic
Form:	Lyophilized or Liquid
Concentration:	1mg/ml
immunogen:	KLH conjugated Synthesised phosphopeptide derived from human A Raf around the phosphorylation site of Tyr301/302:G(p-Y)(p-Y)WE
Lsotype:	IgG
Purification:	affinity purified by Protein A
Storage Buffer:	0.01M TBS(pH7.4) with 1% BSA, 0.03% Proclin300 and 50% Glycerol.
Storage:	Store at -20 °C for one year. Avoid repeated freeze/thaw cycles. The lyophilized antibody is stable at room temperature for at least one month and for greater than a year

	when kept at -20°C. When reconstituted in sterile pH 7.4 0.01M PBS or diluent of antibody the antibody is stable for at least two weeks at 2-4 °C.
PubMed:	PubMed
Product Detail:	<p>The RAF family of signaling proteins has three isoforms: A RAF, RAF 1 and B RAF. These proteins are instrumental in forwarding the stimulus generated by mitogens from monomeric G proteins to the MAP kinase pathway. RAF 1 is known to be downstream of Ras and binds to it by an N terminal noncatalytic domain. This domain is conserved in A RAF and B RAF. 14-3-3 is also known to be an activator of RAFs. Activated RAF directly phosphorylates and activates MEK. A RAF is expressed at a very high concentration in urogenital and kidney tissues.</p> <p>Function: Involved in the transduction of mitogenic signals from the cell membrane to the nucleus.</p> <p>Subunit: Interacts with TH1L/NELFD.</p> <p>Tissue Specificity: Predominantly in urogenital tissues.</p> <p>Similarity: Belongs to the protein kinase superfamily. TKL Ser/Thr protein kinase family. RAF subfamily. Contains 1 phorbol-ester/DAG-type zinc finger. Contains 1 protein kinase domain. Contains 1 RBD (Ras-binding) domain.</p> <p>SWISS: P10398</p> <p>Gene ID: 369</p> <p>Database links:</p> <p>Entrez Gene: 369 Human</p> <p>Entrez Gene: 397601 Pig</p> <p>Entrez Gene: 64363 Rat</p> <p>Entrez Gene: 403063 Zebrafish</p> <p>Omim: 311010 Human</p>

[SwissProt: P10398](#) Human

[SwissProt: O19004](#) Pig

[SwissProt: P14056](#) Rat

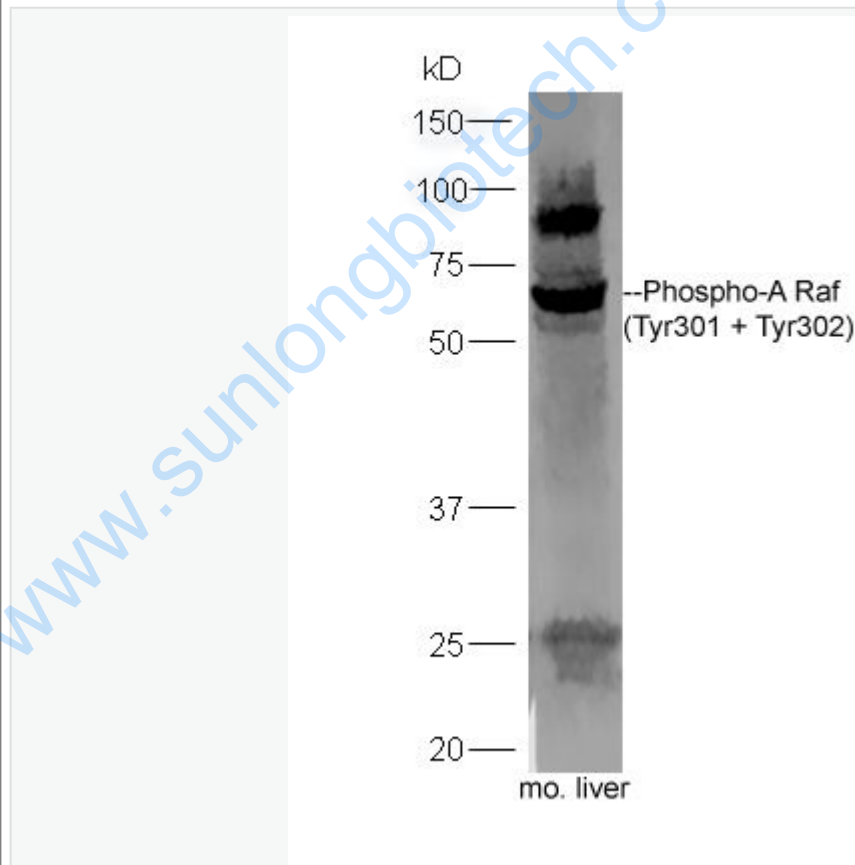
[Unigen: 446641](#) Human

[Unigene: 1714](#) Rat

Important Note:

This product as supplied is intended for research use only, not for use in human, therapeutic or diagnostic applications.

Picture:



Sample: Liver(Mouse) lysate at 30ug;

Primary: Anti-Phospho-A Raf (Tyr301 + Tyr302) at 1:300 dilution;

Secondary: HRP conjugated Goat-Anti-rabbit IgG(SL3421R) at 1: 5000 dilution;

	<p>Predicted band size:67 kD</p>
--	----------------------------------

	<p>Observed band size:67 kD</p>
--	---------------------------------

www.sunlongbiotech.com