



Rabbit Anti-Phospho-TCTP (Ser46) antibody

SL3422R

Product Name:	Phospho-TCTP (Ser46)
Chinese Name:	磷酸化翻译控制Tumour蛋白抗体
Alias:	TCTP (Phospho Ser46); TCTP (Phospho S46); Fortilin; Histamine-releasing factor; p02; p23; TPT1; translationally controlled tumor protein; tumor protein translationally-controlled 1; TCTP_HUMAN.
Organism Species:	Rabbit
Clonality:	Polyclonal
React Species:	Human,Mouse,Rat,Dog,Cow,Horse,Rabbit,Guinea Pig,
Applications:	ELISA=1:500-1000IHC-P=1:400-800IHC-F=1:400-800IF=1:100-500 (Paraffin sections need antigen repair) not yet tested in other applications. optimal dilutions/concentrations should be determined by the end user.
Molecular weight:	20kDa
Cellular localization:	cytoplasmic
Form:	Lyophilized or Liquid
Concentration:	1mg/ml
immunogen:	KLH conjugated Synthesised phosphopeptide derived from human TCTP around the phosphorylation site of Ser46:DD(p-S)LI
Lsotype:	IgG
Purification:	affinity purified by Protein A
Storage Buffer:	0.01M TBS(pH7.4) with 1% BSA, 0.03% Proclin300 and 50% Glycerol.
Storage:	Store at -20 °C for one year. Avoid repeated freeze/thaw cycles. The lyophilized antibody is stable at room temperature for at least one month and for greater than a year when kept at -20°C. When reconstituted in sterile pH 7.4 0.01M PBS or diluent of antibody the antibody is stable for at least two weeks at 2-4 °C.
PubMed:	PubMed
Product Detail:	TCTP is involved in calcium binding and microtubule stabilization. It is an immunoglobulin E dependent histamine-releasing factor produced by lymphocytes of

atopic children and present in biologic fluids of allergic patients. Both human and mouse recombinant HRF proteins caused histamine release from human basophils of a subpopulation of donors (referenced from OMIM).

Function:

Involved in calcium binding and microtubule stabilization.

Subunit:

Interacts with STEAP3.

Subcellular Location:

Cytoplasm.

Tissue Specificity:

Found in several healthy and tumoral cells including erythrocytes, hepatocytes, macrophages, platelets, keratinocytes, erythroleukemia cells, gliomas, melanomas, hepatoblastomas, and lymphomas. It cannot be detected in kidney and renal cell carcinoma (RCC). Expressed in placenta and prostate.

Similarity:

Belongs to the TCTP family.

SWISS:

P13693

Gene ID:

7178

Database links:

[Entrez Gene: 7178](#)Human

[Entrez Gene: 22070](#)Mouse

[Entrez Gene: 116646](#)Rat

[Omir: 600763](#)Human

[SwissProt: P13693](#)Human

[SwissProt: P63028](#)Mouse

[SwissProt: P63029](#)Rat

[Unigene: 374596](#)Human

[Unigene: 296922](#)Mouse

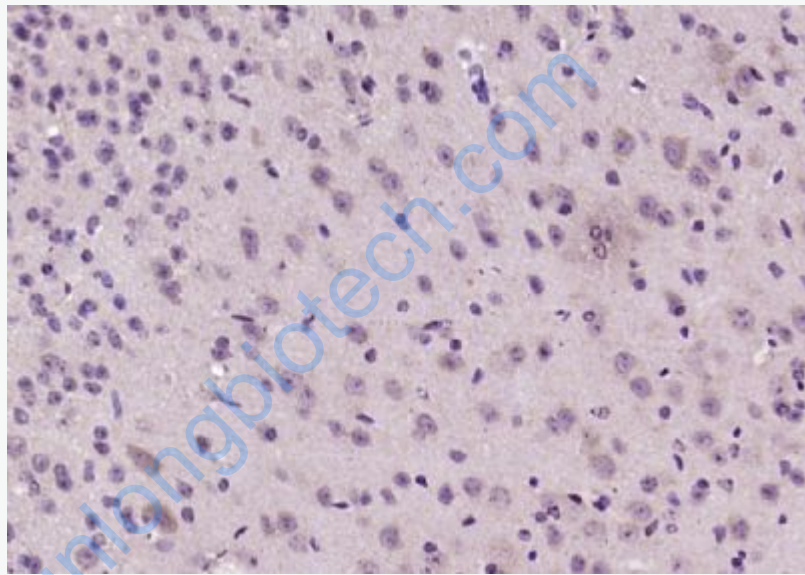
[Unigene: 297482](#)Mouse

[Unigene: 36610](#)Rat

Important Note:

This product as supplied is intended for research use only, not for use in human, therapeutic or diagnostic applications.

翻译控制Tumour蛋白最初发现于Tumour组织, 后来又从其他组织中相继分离出来, 是许多动物Tumour细胞中存在的一类较丰富的蛋白,TCTP参与钙离子结合和微管的稳定,是一类广泛存在于动物、Botany及酵母中的、在序列上高度保守且具有很高表达量的蛋白家族。



Picture:

Paraformaldehyde-fixed, paraffin embedded (mouse brain); Antigen retrieval by boiling in sodium citrate buffer (pH6.0) for 15min; Block endogenous peroxidase by 3% hydrogen peroxide for 20 minutes; Blocking buffer (normal goat serum) at 37°C for 30min; Antibody incubation with (Phospho-TCTP (Ser46)) Polyclonal Antibody, Unconjugated (SL3422R) at 1:200 overnight at 4°C, followed by operating according to SP Kit(Rabbit) (sp-0023) instructions and DAB staining.