



## Rabbit Anti-Phospho-MAP3K8 (Ser400) antibody

SL3454R

<b>Product Name:</b>	Phospho-MAP3K8 (Ser400)
<b>Chinese Name:</b>	磷酸化丝裂原活化蛋白激酶激酶8抗体
<b>Alias:</b>	MAP3K8 (phospho S400); P-MAP3K8/Tpl2 (Ser400); Phospho-MAP3K8(Ser400); Phospho-Tpl2 (Ser400); P-Tpl2 (Ser400);c COT; Cancer Osaka thyroid oncogene; Cancer Osaka thyroid oncogene; CCOT; COT; COT proto oncogene serine/threonine protein kinase; EST; ESTF; Ewing sarcoma transformant; FLJ10486; M3K8_HUMAN; MAP3K 8; MAP3K8; Mitogen activated protein kinase kinase kinase 8; Mitogen-activated protein kinase kinase kinase 8; Proto oncogene cCot; Proto-oncogene c-Cot; Serine/threonine protein kinase cot; Serine/threonine-protein kinase cot; TPL 2; TPL-2; TPL2; Tumor progression locus 2.
<b>Organism Species:</b>	Rabbit
<b>Clonality:</b>	Polyclonal
<b>React Species:</b>	Human,Mouse,Rat,Chicken,Dog,Pig,Cow,Horse,Rabbit,
<b>Applications:</b>	WB=1:500-2000ELISA=1:500-1000IHC-P=1:400-800IHC-F=1:400-800Flow-Cyt=1ug/TestIF=1:100-500 (Paraffin sections need antigen repair) not yet tested in other applications. optimal dilutions/concentrations should be determined by the end user.
<b>Molecular weight:</b>	53kDa
<b>Cellular localization:</b>	cytoplasmic
<b>Form:</b>	Lyophilized or Liquid
<b>Concentration:</b>	1mg/ml
<b>immunogen:</b>	KLH conjugated Synthesised phosphopeptide derived from human MAP3K8/Tpl2 around the phosphorylation site of Ser400:CQ(p-S)LD
<b>Lsotype:</b>	IgG
<b>Purification:</b>	affinity purified by Protein A
<b>Storage Buffer:</b>	0.01M TBS(pH7.4) with 1% BSA, 0.03% Proclin300 and 50% Glycerol.
<b>Storage:</b>	Store at -20 °C for one year. Avoid repeated freeze/thaw cycles. The lyophilized antibody is stable at room temperature for at least one month and for greater than a year when kept at -20°C. When reconstituted in sterile pH 7.4 0.01M PBS or diluent of

	antibody the antibody is stable for at least two weeks at 2-4 °C.
<b>PubMed:</b>	<a href="#">PubMed</a>
<b>Product Detail:</b>	<p>This gene is an oncogene that encodes a member of the serine/threonine protein kinase family. The encoded protein localizes to the cytoplasm and can activate both the MAP kinase and JNK kinase pathways. This protein was shown to activate IkappaB kinases, and thus induce the nuclear production of NF-kappaB. This protein was also found to promote the production of TNF-alpha and IL-2 during T lymphocyte activation. This gene may also utilize a downstream in-frame translation start codon, and thus produce an isoform containing a shorter N-terminus. The shorter isoform has been shown to display weaker transforming activity. Alternate splicing results in multiple transcript variants that encode the same protein. [provided by RefSeq, Sep 2011]</p> <p><b>Function:</b> Required for TLR4 activation of the MEK/ERK pathway. Able to activate NF-kappa-B 1 by stimulating proteasome-mediated proteolysis of NF-kappa-B 1/p105. Plays a role in the cell cycle. The longer form has some transforming activity, although it is much weaker than the activated cot oncoprotein.</p> <p><b>Subunit:</b> Forms a ternary complex with NFKB1 and TNIP2.</p> <p><b>Subcellular Location:</b> Cytoplasm.</p> <p><b>Tissue Specificity:</b> Expressed in several normal tissues and human tumor-derived cell lines.</p> <p><b>Post-translational modifications:</b> Autophosphorylated. Isoform 1 undergoes phosphorylation mainly on Ser residues, and isoform 2 on both Ser and Thr residues.</p> <p><b>Similarity:</b> Belongs to the protein kinase superfamily. STE Ser/Thr protein kinase family. MAP kinase kinase kinase subfamily. Contains 1 protein kinase domain.</p> <p><b>SWISS:</b> P41279</p> <p><b>Gene ID:</b> 1326</p> <p><b>Database links:</b> <a href="#">Entrez Gene: 1326</a>Human</p>

[Entrez Gene: 26410](#)Mouse

[Entrez Gene: 116596](#)Rat

[Olim: 191195](#)Human

[SwissProt: P41279](#)Human

[SwissProt: Q07174](#)Mouse

[SwissProt: Q63562](#)Rat

[Unigene: 432453](#)Human

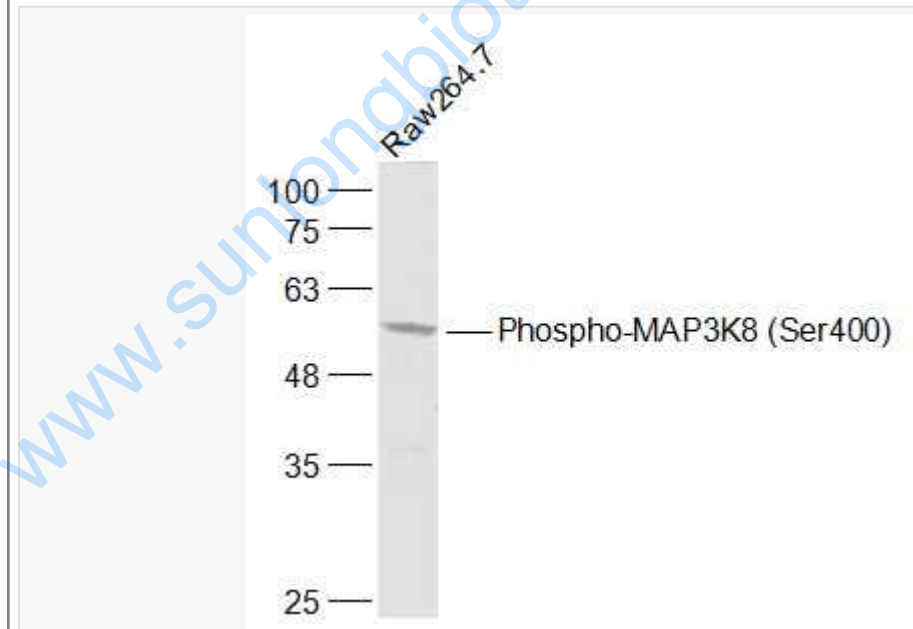
[Unigene: 3275](#)Mouse

[Unigene: 9939](#)Rat

**Important Note:**

This product as supplied is intended for research use only, not for use in human, therapeutic or diagnostic applications.

**Picture:**



Sample:

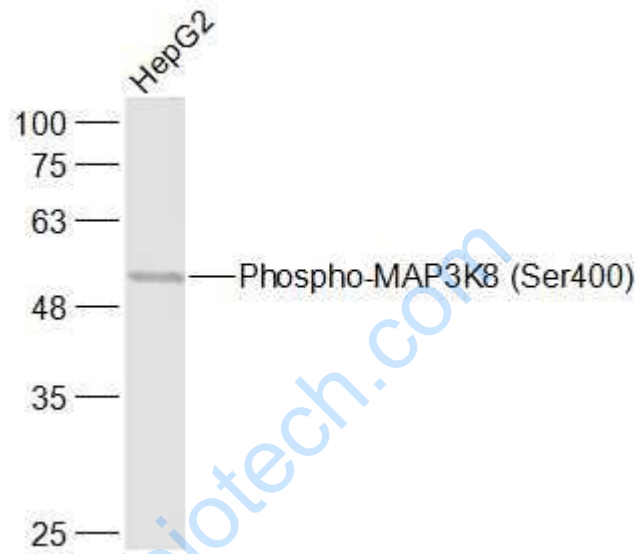
RAW264.7(Mouse) Cell Lysate at 30 ug

Primary: Anti-Phospho-MAP3K8 (Ser400) (SL3454R) at 1/1000 dilution

Secondary: IRDye800CW Goat Anti-Rabbit IgG at 1/20000 dilution

Predicted band size: 53 kD

Observed band size: 53 kD



Sample:

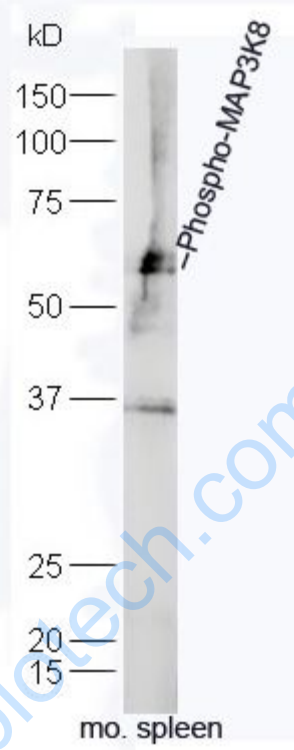
HepG2(Human) Cell Lysate at 30 ug

Primary: Anti-Phospho-MAP3K8 (Ser400) (SL3454R) at 1/1000 dilution

Secondary: IRDye800CW Goat Anti-Rabbit IgG at 1/20000 dilution

Predicted band size: 53 kD

Observed band size: 53 kD



Sample:

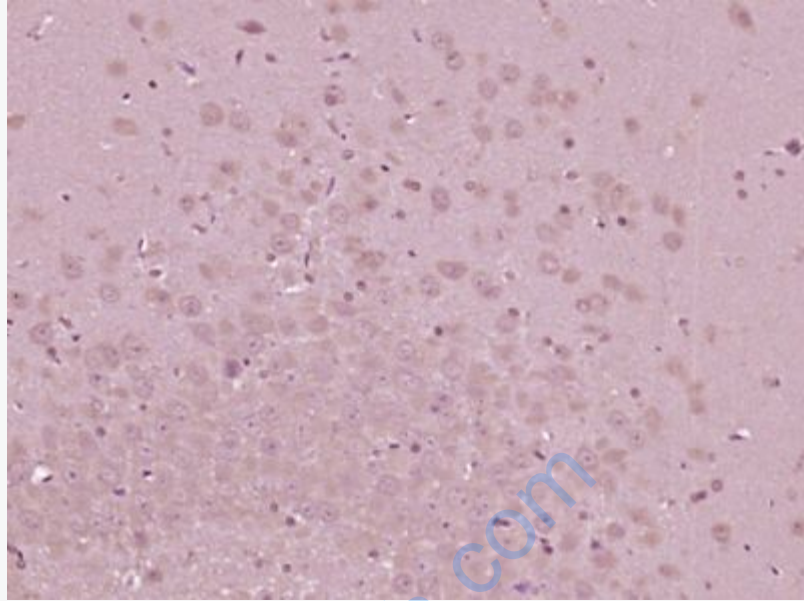
Spleen (Mouse) Lysate at 40 ug

Primary: Anti-Phospho-MAP3K8 (Ser400) (SL3454R) at 1/300 dilution

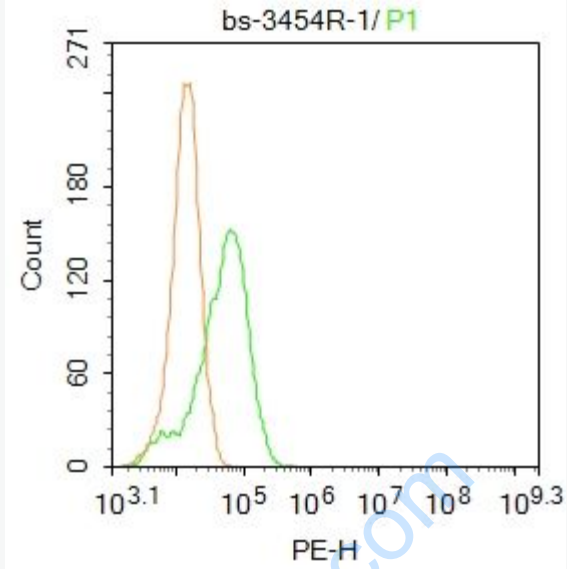
Secondary: IRDye800CW Goat Anti-Rabbit IgG at 1/20000 dilution

Predicted band size: 53 kD

Observed band size: 55 kD



Paraformaldehyde-fixed, paraffin embedded (Rat brain); Antigen retrieval by boiling in sodium citrate buffer (pH6.0) for 15min; Block endogenous peroxidase by 3% hydrogen peroxide for 20 minutes; Blocking buffer (normal goat serum) at 37°C for 30min; Antibody incubation with (Phospho-MAP3K8 (Ser400)) Polyclonal Antibody, Unconjugated (SL3454R) at 1:400 overnight at 4°C, followed by operating according to SP Kit(Rabbit) (sp-0023) instructions and DAB staining.



Blank control: Hela.

Primary Antibody (green line): Rabbit Anti-MAP3K8 antibody (SL3454R)

Dilution:  $1\mu\text{g} / 10^6$  cells;

Isotype Control Antibody (orange line): Rabbit IgG .

Secondary Antibody : Goat anti-rabbit IgG-PE

Dilution:  $1\mu\text{g} / \text{test}$ .

Protocol

The cells were fixed with 4% PFA (10min at room temperature)and then permeabilized with PBST for 20 min at room temperature. The cells were then incubated in 5%BSA to block non-specific protein-protein interactions for 30 min at at room temperature .Cells stained with Primary Antibody for 30 min at room temperature. The secondary antibody used for 40 min at room temperature.

Acquisition of 20,000 events was performed.