



Rabbit Anti-Phospho-PPIG (Ser376) antibody

SL3461R

Product Name:	Phospho-PPIG (Ser376)
Chinese Name:	磷酸化亲环蛋白(亲环素)PPIG抗体
Alias:	CARS cyclophilin; CARS Cyp; CASP 10; CASP10; Clk associating RS cyclophilin; Cyclophilin G; CyclophilinG; CYP; MGC133241; Peptidyl prolyl cis trans isomerase G; Peptidyl prolyl isomerase G; Peptidylprolyl isomerase G (cyclophilin G); Peptidylprolyl isomerase G; PPIase G; Rotamase G; RotamaseG; PPIG_HUMAN.
Organism Species:	Rabbit
Clonality:	Polyclonal
React Species:	Human,Mouse,Rat,Chicken,Dog,Pig,Cow,Horse,Sheep,
Applications:	ELISA=1:500-1000IHC-P=1:400-800IHC-F=1:400-800IF=1:100-500 (Paraffin sections need antigen repair) not yet tested in other applications. optimal dilutions/concentrations should be determined by the end user.
Molecular weight:	89kDa
Cellular localization:	The nucleus
Form:	Lyophilized or Liquid
Concentration:	1mg/ml
immunogen:	KLH conjugated Synthesised phosphopeptide derived from human PPIG around the phosphorylation site of Ser376:VS(p-S)GE
Lsotype:	IgG
Purification:	affinity purified by Protein A
Storage Buffer:	0.01M TBS(pH7.4) with 1% BSA, 0.03% Proclin300 and 50% Glycerol.
Storage:	Store at -20 °C for one year. Avoid repeated freeze/thaw cycles. The lyophilized antibody is stable at room temperature for at least one month and for greater than a year when kept at -20°C. When reconstituted in sterile pH 7.4 0.01M PBS or diluent of antibody the antibody is stable for at least two weeks at 2-4 °C.
PubMed:	PubMed
Product Detail:	PPIG belongs to the the peptidyl-prolyl cis/trans isomerase protein family (PPIases).

PPIases accelerate the folding of proteins. PPIG catalyzes the cis-trans isomerization of proline imidic peptide bonds in oligopeptides and is implicated in the folding, transport, and assembly of proteins. It is distributed in nuclear speckles, a nuclear compartment rich in splicing factors, and colocalizes with the splicing factors SC35 and pinin, suggesting a role in the regulation of pre-mRNA splicing.

Function:

PPIases accelerate the folding of proteins. It catalyzes the cis-trans isomerization of proline imidic peptide bonds in oligopeptides. May be implicated in the folding, transport, and assembly of proteins. May play an important role in the regulation of pre-mRNA splicing.

Subunit:

Interacts with CLK1, PNN and with the phosphorylated C-terminal domain of RNA polymerase II.

Subcellular Location:

Nucleus matrix. Nucleus speckle. Note=Colocalizes with RNA splicing factors at nuclear speckles.

Tissue Specificity:

Ubiquitous.

Post-translational modifications:

Phosphorylated upon DNA damage, probably by ATM or ATR.

Similarity:

Contains 1 PPIase cyclophilin-type domain.

SWISS:

Q13427

Gene ID:

9360

Database links:

[Entrez Gene: 9360](#)Human

[Entrez Gene: 228005](#)Mouse

[Entrez Gene: 83624](#)Rat

[Omim: 606093](#)Human

[SwissProt: Q13427](#)Human

[SwissProt: A2AR02](#)Mouse

[SwissProt: O55035](#)Rat

[Unigene: 727580](#)Human

[Unigene: 11815](#)Mouse

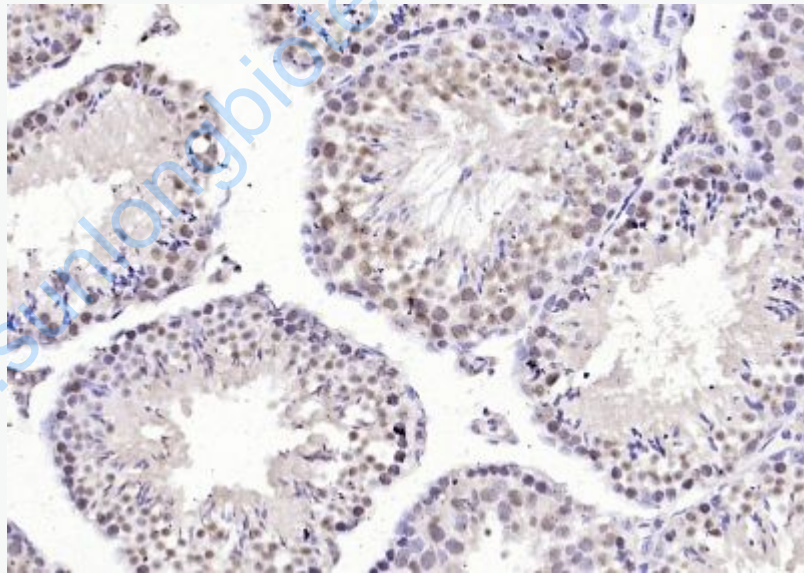
[Unigene: 474951](#)Mouse

[Unigene: 10898](#)Rat

Important Note:

This product as supplied is intended for research use only, not for use in human, therapeutic or diagnostic applications.

肽基脯氨酸基顺反异构酶, 广泛存在于各种组织和器官。根据对免疫抑制剂的敏感性, 分属三个独立的家族: 亲环蛋白PPIG、FK506Binding protein和细蛋白。能够加速自身折叠和体内新生肽链折叠及变性蛋白质的体外折叠, 主要分布于内质网。



Picture:

Paraformaldehyde-fixed, paraffin embedded (mouse testis tissue); Antigen retrieval by boiling in sodium citrate buffer (pH6.0) for 15min; Block endogenous peroxidase by 3% hydrogen peroxide for 20 minutes; Blocking buffer (normal goat serum) at 37°C for 30min; Antibody incubation with (PPIG (Ser376)) Polyclonal Antibody, Unconjugated (SL3461R) at 1:400 overnight at 4°C, followed by operating

	according to SP Kit(Rabbit) (sp-0023) instructions and DAB staining.
--	--

www.sunlongbiotech.com