



## Rabbit Anti-SRC3 antibody

SL3571R

<b>Product Name:</b>	SRC3
<b>Chinese Name:</b>	类固醇受体激活蛋白3抗体
<b>Alias:</b>	KAT13B; AIB1; SRC-3; ACTR; AIB 1; AIB-1; AIB1; Amplified in breast cancer 1; Amplified in breast cancer 1 protein; bHLHe42; CAGH 16; CAGH16; CBP interacting protein; CBP-interacting protein; Class E basic helix-loop-helix protein 42; CTG 26; CTG26; KAT13B / AIB1; MGC141848; NCOA 3; NCoA-3; Ncoa3; NCOA3_HUMAN; Nuclear receptor coactivator 3; pCIP; RAC 3; RAC-3; RAC3; Receptor associated coactivator 3; Receptor-associated coactivator 3; SRC 3; SRC-3; Steroid receptor coactivator protein 3; Thyroid hormone receptor activator molecule 1; TNRC14; TNRC16; TRAM 1; TRAM-1; TRAM1.
<b>Organism Species:</b>	Rabbit
<b>Clonality:</b>	Polyclonal
<b>React Species:</b>	Human,Mouse,Rat,Chicken,Dog,Cow,Horse,Rabbit,
<b>Applications:</b>	WB=1:500-2000ELISA=1:500-1000IHC-P=1:400-800IHC-F=1:400-800IF=1:100-500 (Paraffin sections need antigen repair) not yet tested in other applications. optimal dilutions/concentrations should be determined by the end user.
<b>Molecular weight:</b>	155kDa
<b>Cellular localization:</b>	The nucleuscytoplasmic
<b>Form:</b>	Lyophilized or Liquid
<b>Concentration:</b>	1mg/ml
<b>immunogen:</b>	KLH conjugated synthetic peptide derived from human SRC3:701-800/1424
<b>Lsotype:</b>	IgG
<b>Purification:</b>	affinity purified by Protein A
<b>Storage Buffer:</b>	0.01M TBS(pH7.4) with 1% BSA, 0.03% Proclin300 and 50% Glycerol.
<b>Storage:</b>	Store at -20 °C for one year. Avoid repeated freeze/thaw cycles. The lyophilized antibody is stable at room temperature for at least one month and for greater than a year when kept at -20°C. When reconstituted in sterile pH 7.4 0.01M PBS or diluent of antibody the antibody is stable for at least two weeks at 2-4 °C.
<b>PubMed:</b>	<a href="#">PubMed</a>

**Product Detail:**

KAT13B/AIB1 interacts in a ligand-dependent fashion with the estrogen receptor to enhance estrogen-dependent transcriptional gene activation. The protein encoded by this gene is a nuclear receptor coactivator that interacts with nuclear hormone receptors to enhance their transcriptional activator functions. The encoded protein has histone acetyltransferase activity and recruits KAT3A / KAT3B as part of a multisubunit coactivation complex. This protein is initially found in the cytoplasm but is translocated into the nucleus upon phosphorylation. Two transcript variants encoding different isoforms have been found for this gene. In addition, a polymorphic repeat region is found in the C-terminus of the encoded protein.

**Function:**

Nuclear receptor coactivator that directly binds nuclear receptors and stimulates the transcriptional activities in a hormone-dependent fashion. Plays a central role in creating a multisubunit coactivator complex, which probably acts via remodeling of chromatin. Involved in the coactivation of different nuclear receptors, such as for steroids (GR and ER), retinoids (RARs and RXRs), thyroid hormone (TRs), vitamin D3 (VDR) and prostanoids (PPARs). Displays histone acetyltransferase activity. Also involved in the coactivation of the NF-kappa-B pathway via its interaction with the NFKB1 subunit. Interacts with PSMB9.

**Subunit:**

Interacts with CARM1. Present in a complex containing NCOA2, IKKA, IKKB, IKBKG and the histone acetyltransferase protein CREBBP. Interacts with CASP8AP2, NR3C1 and PCAF. Interacts with ATAD2 and this interaction is enhanced by estradiol.

**Subcellular Location:**

Cytoplasm. Nucleus. Note=Mainly cytoplasmic and weakly nuclear. Upon TNF activation and subsequent phosphorylation, it translocates from the cytoplasm to the nucleus.

**Tissue Specificity:**

Widely expressed. High expression in heart, skeletal muscle, pancreas and placenta. Low expression in brain, and very low in lung, liver and kidney.

**Post-translational modifications:**

Acetylated by CREBBP. Acetylation occurs in the RID domain, and disrupts the interaction with nuclear receptors and regulates its function.

Methylated by CARM1 (By similarity).

Phosphorylated by IKK complex. Regulated its function. Phosphorylation at Ser-601 by CK1 promotes coactivator function.

**Similarity:**

Belongs to the SRC/p160 nuclear receptor coactivator family.

Contains 1 basic helix-loop-helix (bHLH) domain.

Contains 1 PAS (PER-ARNT-SIM) domain.

**SWISS:**  
Q9Y6Q9

**Gene ID:**  
8202

**Database links:**

[Entrez Gene: 8202](#)Human

[Omim: 601937](#)Human

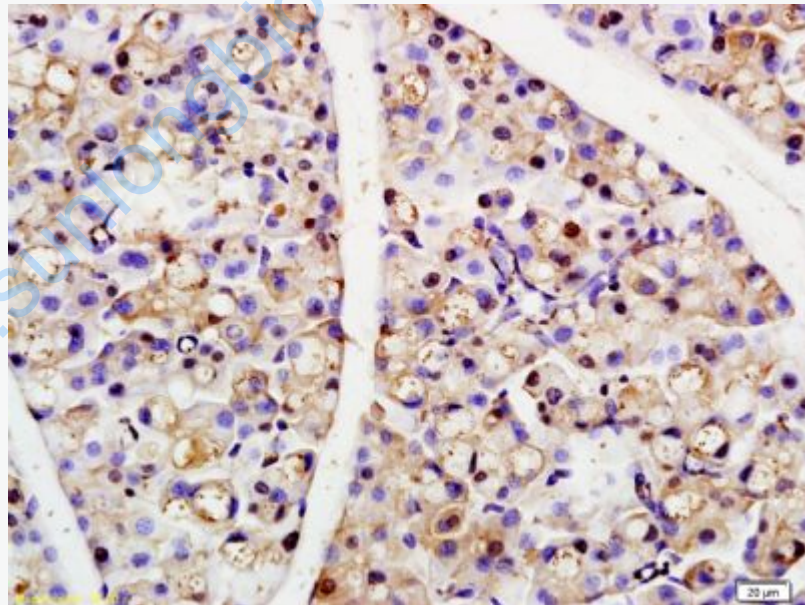
[SwissProt: Q9Y6Q9](#)Human

[Unigene: 592142](#)Human

**Important Note:**

This product as supplied is intended for research use only, not for use in human, therapeutic or diagnostic applications.

**Picture:**



Tissue/cell: rat pancreas tissue; 4% Paraformaldehyde-fixed and paraffin-embedded;  
Antigen retrieval: citrate buffer ( 0.01M, pH 6.0 ), Boiling bathing for 15min; Block endogenous peroxidase by 3% Hydrogen peroxide for 30min; Blocking buffer (normal goat serum,C-0005) at 37°C for 20 min;

	<p>Incubation: Anti-NCOA3/KAT13B/AIB1/SRC-3 Polyclonal Antibody, Unconjugated(SL3571R) 1:200, overnight at 4°C, followed by conjugation to the secondary antibody(SP-0023) and DAB(C-0010) staining</p>
--	---

[www.sunlongbiotech.com](http://www.sunlongbiotech.com)