



Rabbit Anti-CXCR5 antibody

SL3598R

Product Name:	CXCR5
Chinese Name:	细胞表面Chemokine受体5抗体
Alias:	BLR 1; BLR1; Burkitt lymphoma receptor 1; Burkitt lymphoma receptor 1 GTP binding protein; C X C chemokine receptor type 5; C-X-C chemokine receptor type 5; CD 185; CD185; CD185 antigen; Chemokine C X C motif receptor 5; Chemokine CXC motif receptor 5; Chemokine receptor 5; CXC chemokine receptor type 5; CXC R5; CXC-R5; CXCR 5; CXCR-5; Cxcr5; CXCR5_HUMAN; MDR 15; MDR-15; MDR15; MGC117347; Monocyte derived receptor 15; Monocyte-derived receptor 15.
Organism Species:	Rabbit
Clonality:	Polyclonal
React Species:	Human,Mouse,Rat,Pig,Cow,Rabbit,
Applications:	WB=1:500-2000ELISA=1:500-1000 not yet tested in other applications. optimal dilutions/concentrations should be determined by the end user.
Molecular weight:	42kDa
Cellular localization:	The cell membrane
Form:	Lyophilized or Liquid
Concentration:	1mg/ml
immunogen:	KLH conjugated synthetic peptide derived from human CXCR5/CD185:281-372/372<Cytoplasmic>
Lsotype:	IgG
Purification:	affinity purified by Protein A
Storage Buffer:	0.01M TBS(pH7.4) with 1% BSA, 0.03% Proclin300 and 50% Glycerol.
Storage:	Store at -20 °C for one year. Avoid repeated freeze/thaw cycles. The lyophilized antibody is stable at room temperature for at least one month and for greater than a year when kept at -20°C. When reconstituted in sterile pH 7.4 0.01M PBS or diluent of antibody the antibody is stable for at least two weeks at 2-4 °C.
PubMed:	PubMed
Product Detail:	The CXCR5 gene was identified as a gene specifically expressed in Burkitt's lymphoma and lymphatic tissues. CXCR5 protein is predicted to be a seven transmembrane G

protein coupled receptor and belongs to the CXC chemokine receptor family. BLC, a B lymphocyte chemoattractant, was identified to be a specific ligand for this receptor. Studies of the gene and its mouse counterpart strongly suggest the essential function of the protein is in B cell migration and localization within specific anatomic compartments, such as follicles in lymph nodes as well as in spleen.

Function:

Cytokine receptor that binds to B-lymphocyte chemoattractant (BLC). Involved in B-cell migration into B-cell follicles of spleen and Peyer patches but not into those of mesenteric or peripheral lymph nodes. May have a regulatory function in Burkitt lymphoma (BL) lymphomagenesis and/or B-cell differentiation.

Subcellular Location:

Cell membrane; Multi-pass membrane protein.

Tissue Specificity:

Expression in mature B-cells and Burkitt lymphoma cells.

Similarity:

Belongs to the G-protein coupled receptor 1 family.

SWISS:

P32302

Gene ID:

643

Database links:

[Entrez Gene: 643](#)Human

[Entrez Gene: 12145](#)Mouse

[Entrez Gene: 29363](#)Rat

[Oimim: 601613](#)Human

[SwissProt: P32302](#)Human

[SwissProt: Q04683](#)Mouse

[SwissProt: P34997](#)Rat

[Unigene: 113916](#)Human

[Unigene: 490637](#)Mouse

[Unigene: 6246](#)Mouse

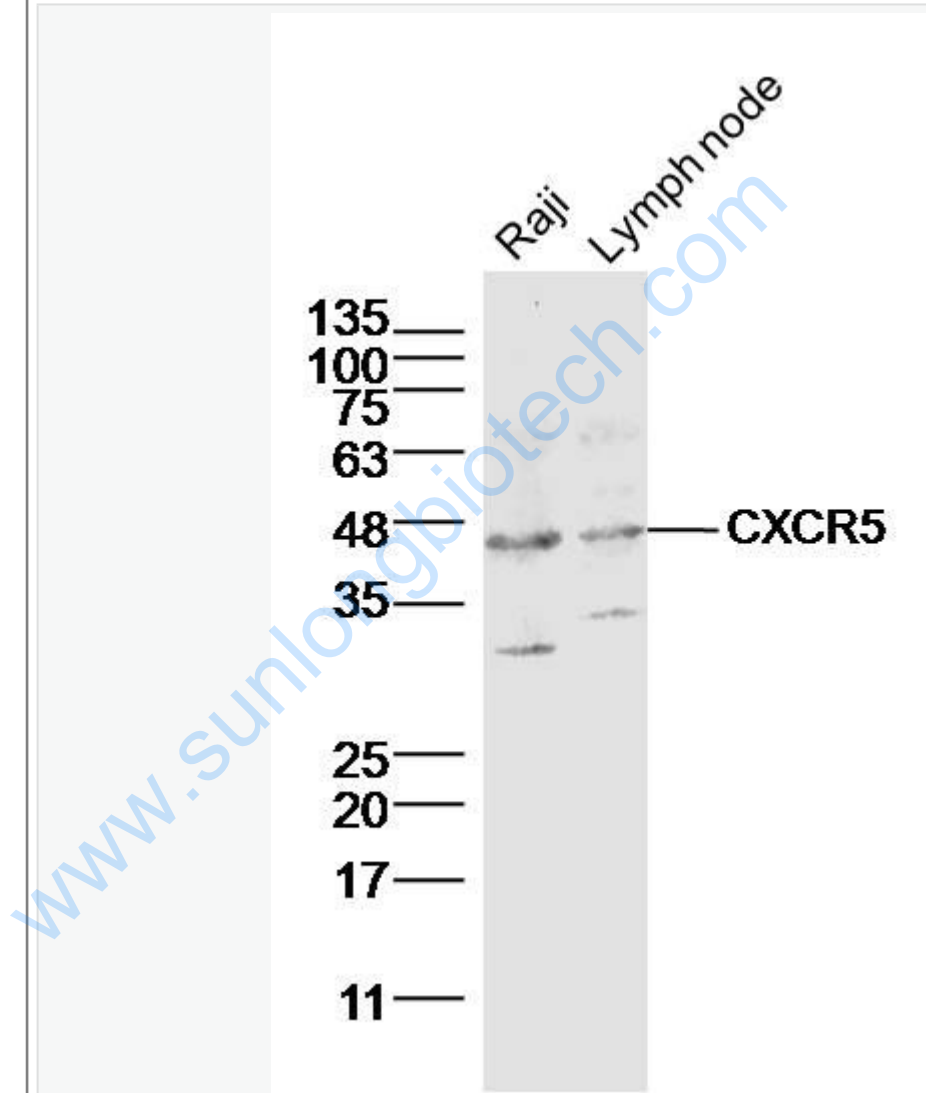
[Unigene: 120732](#)Rat

[Unigene: 127121](#)Rat

Important Note:

This product as supplied is intended for research use only, not for use in human, therapeutic or diagnostic applications.

Picture:



Sample:

Raji cell(human) Lysate at 40 ug

Lymph node(mouse)Lysate at 40 ug

Primary: Anti-CXCR5 (SL3598R)at 1/300 dilution

Secondary: IRDye800CW Goat Anti-Rabbit IgG at 1/20000 dilution

Predicted band size: 42kD

Observed band size: 42 kD

www.sunlongbiotech.com