



## Rabbit Anti-MTF-1 antibody

SL3601R

<b>Product Name:</b>	MTF-1
<b>Chinese Name:</b>	金属应答元件结合转录因子-1抗体
<b>Alias:</b>	Metal regulatory transcription factor 1; Metal response element binding transcription factor 1; MRE binding transcription factor; Transcription factor MTF1; MTF1_HUMAN.
<b>Organism Species:</b>	Rabbit
<b>Clonality:</b>	Polyclonal
<b>React Species:</b>	Human,Mouse,Rat,Dog,Pig,Cow,Horse,Rabbit,
<b>Applications:</b>	ELISA=1:500-1000IHC-P=1:400-800IHC-F=1:400-800IF=1:100-500 (Paraffin sections need antigen repair) not yet tested in other applications. optimal dilutions/concentrations should be determined by the end user.
<b>Molecular weight:</b>	81kDa
<b>Cellular localization:</b>	The nucleus
<b>Form:</b>	Lyophilized or Liquid
<b>Concentration:</b>	1mg/ml
<b>immunogen:</b>	KLH conjugated synthetic peptide derived from human MTF-1:101-200/753
<b>Lsotype:</b>	IgG
<b>Purification:</b>	affinity purified by Protein A
<b>Storage Buffer:</b>	0.01M TBS(pH7.4) with 1% BSA, 0.03% Proclin300 and 50% Glycerol.
<b>Storage:</b>	Store at -20 °C for one year. Avoid repeated freeze/thaw cycles. The lyophilized antibody is stable at room temperature for at least one month and for greater than a year when kept at -20°C. When reconstituted in sterile pH 7.4 0.01M PBS or diluent of antibody the antibody is stable for at least two weeks at 2-4 °C.
<b>PubMed:</b>	<a href="#">PubMed</a>
<b>Product Detail:</b>	The zinc finger transcription factor MTF-1 (metal-responsive transcription factor-1) is conserved from insects to vertebrates. The major role of MTF-1 in both organisms is to control the transcription of genes involved in the homeostasis and detoxification of heavy metal ions such as Cu <sup>2+</sup> , Zn <sup>2+</sup> and Cd <sup>2+</sup> . In mammals, MTF-1 serves at least two additional roles. First, targeted disruption of the MTF-1 gene results in death at

embryonic day 14 due to liver degeneration, revealing a stage-specific developmental role. Second, under hypoxic-anoxic stress, MTF-1 helps to activate the transcription of the gene placental growth factor (PIGF), an angiogenic protein.

**Function:**

Activates the metallothionein I promoter. Binds to the metal responsive element (MRE).

**Subcellular Location:**

Nucleus.

**Similarity:**

Contains 6 C2H2-type zinc fingers.

**SWISS:**

Q14872

**Gene ID:**

4520

**Database links:**

[Entrez Gene: 4520](#)Human

[Omim: 600172](#)Human

[SwissProt: Q14872](#)Human

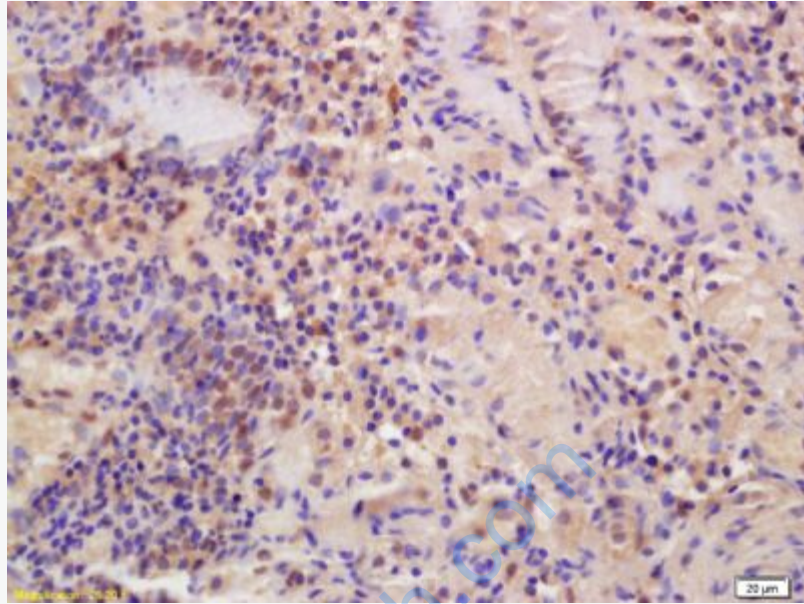
[Unigene: 471991](#)Human

[Unigene: 591505](#)Human

**Important Note:**

This product as supplied is intended for research use only, not for use in human, therapeutic or diagnostic applications.

锌感应蛋白金属反应转录因子-1



**Picture:**

Tissue/cell: human gastric carcinoma; 4% Paraformaldehyde-fixed and paraffin-embedded;

Antigen retrieval: citrate buffer ( 0.01M, pH 6.0 ), Boiling bathing for 15min; Block endogenous peroxidase by 3% Hydrogen peroxide for 30min; Blocking buffer (normal goat serum,C-0005) at 37°C for 20 min;

Incubation: Anti-MTF-1 Polyclonal Antibody, Unconjugated(SL3601R) 1:200, overnight at 4°C, followed by conjugation to the secondary antibody(SP-0023) and DAB(C-0010) staining