



Rabbit Anti-MEG1 antibody

SL3629R

Product Name:	MEG1
Chinese Name:	蛋白酪氨酸磷酸酶非受体型4抗体
Alias:	MEG; Protein tyrosine phosphatase MEG1; PTN4; PTPase MEG1; PTPN4; Tyrosine protein phosphatase non receptor type 4; PTN4_HUMAN.
Organism Species:	Rabbit
Clonality:	Polyclonal
React Species:	Human,Mouse,Rat,Chicken,Dog,Pig,Cow,Horse,Sheep,
Applications:	ELISA=1:500-1000IHC-P=1:400-800IHC-F=1:400-800IF=1:100-500 (Paraffin sections need antigen repair) not yet tested in other applications. optimal dilutions/concentrations should be determined by the end user.
Molecular weight:	106kDa
Cellular localization:	cytoplasmicThe cell membrane
Form:	Lyophilized or Liquid
Concentration:	1mg/ml
immunogen:	KLH conjugated synthetic peptide derived from human PTPN4/MEG1:51-150/926
Lsotype:	IgG
Purification:	affinity purified by Protein A
Storage Buffer:	0.01M TBS(pH7.4) with 1% BSA, 0.03% Proclin300 and 50% Glycerol.
Storage:	Store at -20 °C for one year. Avoid repeated freeze/thaw cycles. The lyophilized antibody is stable at room temperature for at least one month and for greater than a year when kept at -20°C. When reconstituted in sterile pH 7.4 0.01M PBS or diluent of antibody the antibody is stable for at least two weeks at 2-4 °C.
PubMed:	PubMed
Product Detail:	The protein encoded by this gene is a member of the protein tyrosine phosphatase (PTP) family. PTPs are known to be signaling molecules that regulate a variety of cellular processes including cell growth, differentiation, mitotic cycle, and oncogenic transformation. This protein contains a C-terminal PTP domain and an N-terminal domain homologous to the band 4.1 superfamily of cytoskeletal-associated proteins. This PTP has been shown to interact with glutamate receptor delta 2 and epsilon

subunits, and is thought to play a role in signalling downstream of the glutamate receptors through tyrosine dephosphorylation. [provided by RefSeq, Jul 2008]

Function:

May act at junctions between the membrane and the cytoskeleton.

Subcellular Location:

Cell membrane; Peripheral membrane protein; Cytoplasmic side. Cytoplasm, cytoskeleton.

Similarity:

Belongs to the protein-tyrosine phosphatase family. Non-receptor class subfamily. Contains 1 FERM domain.
Contains 1 PDZ (DHR) domain.
Contains 1 tyrosine-protein phosphatase domain.

SWISS:

P29074

Gene ID:

5775

Database links:

[Entrez Gene: 5775](#) Human

[Entrez Gene: 19258](#) Mouse

[Omid: 176878](#) Human

[SwissProt: P29074](#) Human

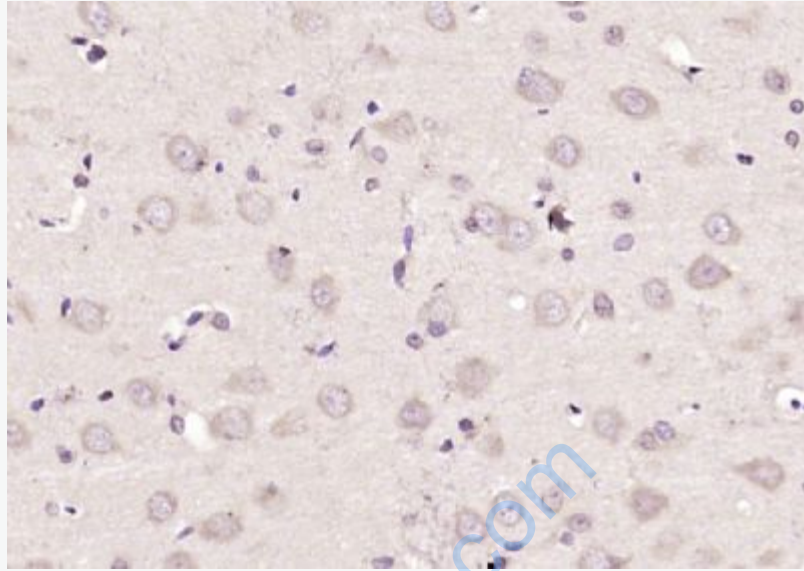
[SwissProt: Q8BQQ4](#) Mouse

[SwissProt: Q9WU22](#) Mouse

[Unigene: 469809](#) Human

Important Note:

This product as supplied is intended for research use only, not for use in human, therapeutic or diagnostic applications.



Picture:

Paraformaldehyde-fixed, paraffin embedded (rat brain); Antigen retrieval by boiling in sodium citrate buffer (pH6.0) for 15min; Block endogenous peroxidase by 3% hydrogen peroxide for 20 minutes; Blocking buffer (normal goat serum) at 37°C for 30min; Antibody incubation with (MEG1) Polyclonal Antibody, Unconjugated (SL3629R) at 1:200 overnight at 4°C, followed by operating according to SP Kit(Rabbit) (sp-0023) instructions and DAB staining.