




## Rabbit Anti-Synaptopodin antibody

SL3633R

<b>Product Name:</b>	Synaptopodin
<b>Chinese Name:</b>	突触足蛋白抗体
<b>Alias:</b>	9030217H17RIK; 9130229N11; 9330140I15Rik; AW046661; SYNAPTOPODIN; KIAA1029; SYNPO; SYNPO HUMAN.
<b>文献引用</b> 	<p><b>Specific References(2)</b> SL3633R has been referenced in 2 publications.</p> <p><b>[IF=3.73]</b>Zhang, Xueming, et al. "Resolvin D1 Protects Podocytes in Adriamycin-Induced Nephropathy through Modulation of 14-3-3<math>\beta</math> Acetylation." PLOS ONE 8.6 (2013): e67471.<b>IP;Mouse.</b></p> <p><a href="#">PubMed:23840712</a></p> <p><b>[IF=0.00]</b>Garovic, Vesna D., and Muthuvel Jayachandran. "DETECTING PODOCYTE INJURY IN DIABETIC NEPHROPATHY AND GLOMERULONEPHRITIS." U.S. Patent No. 20,170,003,299. 5 Jan. 2017.<b>Human.</b></p> <p><a href="#">PubMed:0</a></p>
<b>Organism Species:</b>	Rabbit
<b>Clonality:</b>	Polyclonal
<b>React Species:</b>	Human,Mouse,Rat,
<b>Applications:</b>	WB=1:500-2000IHC-P=1:400-800Flow-Cyt=1 $\mu$ g /test (Paraffin sections need antigen repair) not yet tested in other applications. optimal dilutions/concentrations should be determined by the end user.
<b>Molecular weight:</b>	102kDa
<b>Cellular localization:</b>	cytoplasmicThe cell membrane
<b>Form:</b>	Lyophilized or Liquid
<b>Concentration:</b>	1mg/ml
<b>immunogen:</b>	KLH conjugated synthetic peptide derived from human Synaptopodin:601-700/903

<b>Lsotype:</b>	IgG
<b>Purification:</b>	affinity purified by Protein A
<b>Storage Buffer:</b>	0.01M TBS(pH7.4) with 1% BSA, 0.03% Proclin300 and 50% Glycerol.
<b>Storage:</b>	Store at -20 °C for one year. Avoid repeated freeze/thaw cycles. The lyophilized antibody is stable at room temperature for at least one month and for greater than a year when kept at -20°C. When reconstituted in sterile pH 7.4 0.01M PBS or diluent of antibody the antibody is stable for at least two weeks at 2-4 °C.
<b>PubMed:</b>	<a href="#">PubMed</a>
<b>Product Detail:</b>	<p>Synaptopodin is an actin-associated protein that may play a role in actin-based cell shape and motility. May be essential for the formation of spine apparatuses in spines of telencephalic neurons, involved in synaptic plasticity. The name synaptopodin derives from the protein's associations with postsynaptic densities and dendritic spines and with renal podocytes.</p> <p><b>Subunit:</b> Interacts with BAIAP1. Interacts with actin (By similarity). Interacts (via PPxY motifs) with WWC1 (via WW domains).</p> <p><b>Subcellular Location:</b> Cytoplasm, cytoskeleton (By similarity). Cell junction, tight junction (By similarity). Perikaryon (By similarity). Cell projection, dendritic spine (By similarity). Cell junction, synapse, postsynaptic cell membrane, postsynaptic density (By similarity). Cell junction, synapse (By similarity). Note=Localized at the tight junction of cells. In brain, localized to the postsynaptic densities and in the perikarya. Associated with dendritic spines of a subset of synapses (By similarity).</p> <p><b>Tissue Specificity:</b> Expressed in brain, namely in the olfactory bulb, cerebral cortex, striatum, and hippocampus, but not in the cerebellum. Also expressed in the podocytes of kidney glomeruli. In the hippocampus, mainly expressed in the principal cell layer of the dentate gyrus and Ammon's horn.</p> <p><b>Similarity:</b> Belongs to the synaptopodin family.</p> <p><b>SWISS:</b> Q8N3V7</p> <p><b>Gene ID:</b> 11346</p> <p><b>Database links:</b> <a href="#">Entrez Gene: 11346</a>Human <a href="#">Entrez Gene: 104027</a>Mouse</p>

[Entrez Gene: 60324](#)Rat

[Olim: 608155](#)Human

[SwissProt: Q8N3V7](#)Human

[SwissProt: Q8CC35](#)Mouse

[SwissProt: Q9Z327](#)Rat

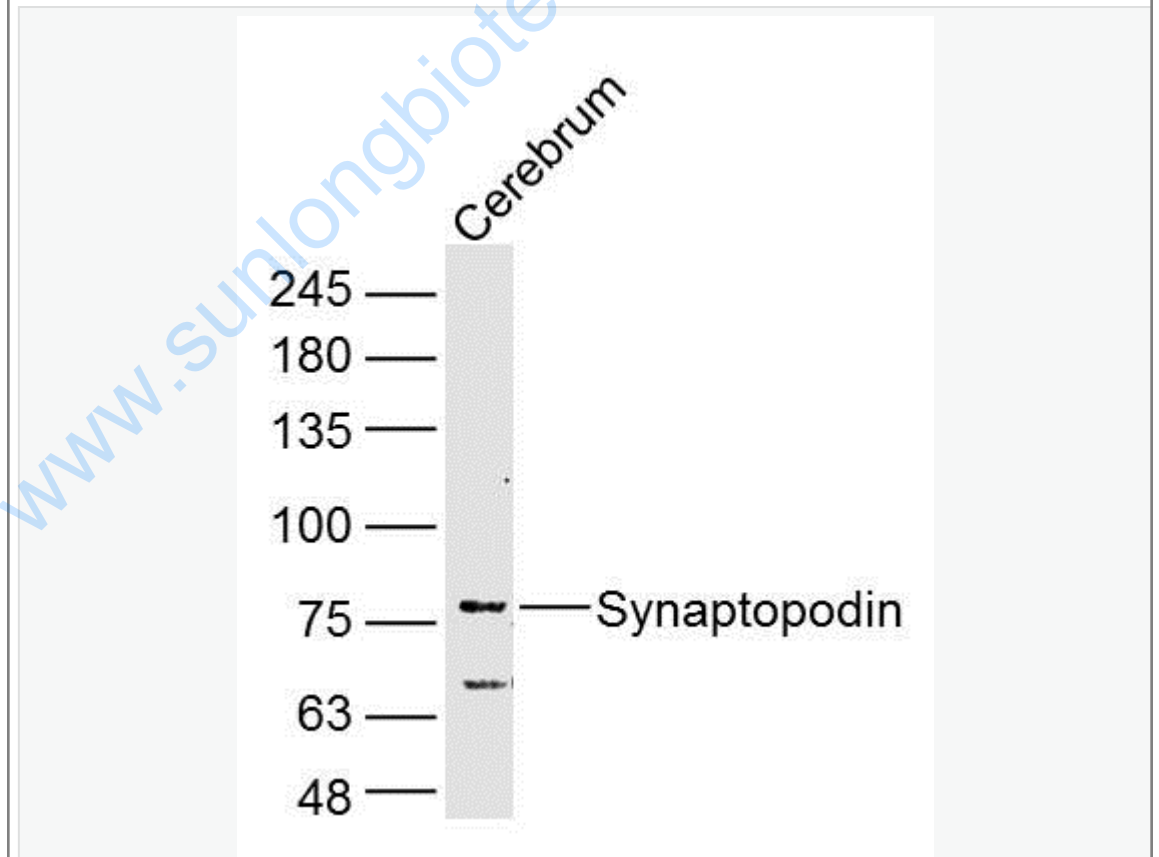
[Unigene: 435228](#)Human

**Important Note:**

This product as supplied is intended for research use only, not for use in human, therapeutic or diagnostic applications.

synaptopodin是一种与肌动蛋白微丝偶联的蛋白,其富含脯氨酸,为线状蛋白质,在动物体内表达于肾小球的足细胞和后脑的突触内, synaptopodin被认为是足细胞特有的分化成熟Marker。

Picture:



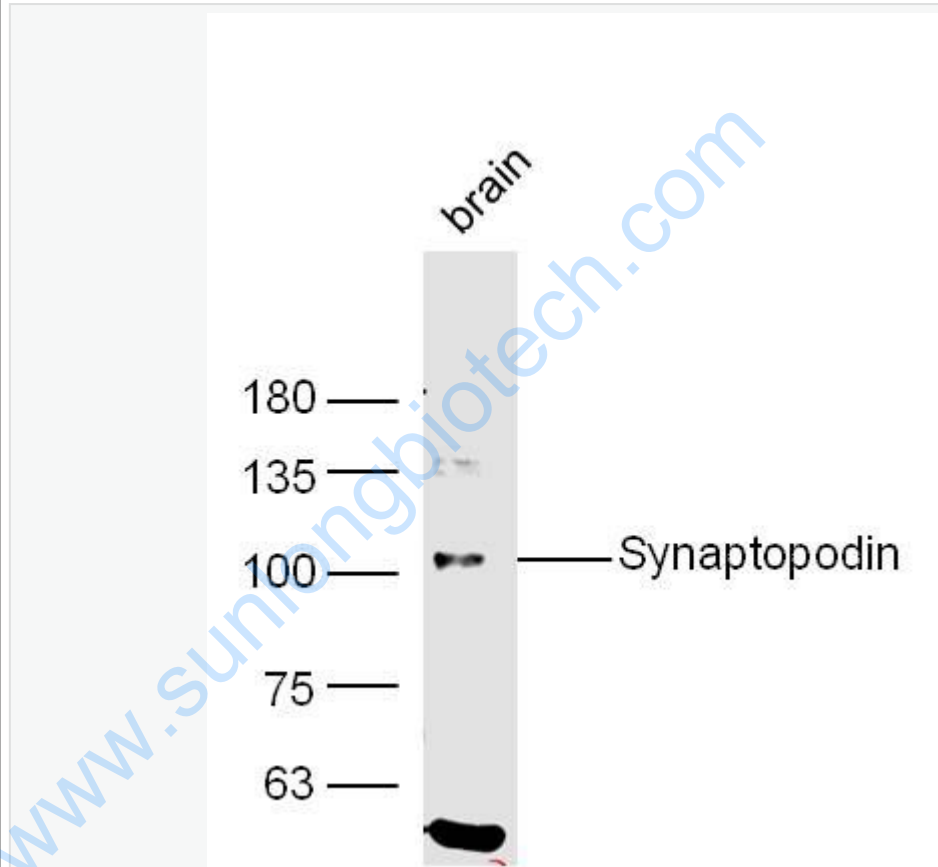
Sample: Cerebrum (Rat) Lysate at 40 ug

Primary: Anti-Synaptopodin (SL3633R) at 1/300 dilution

Secondary: IRDye800CW Goat Anti-Rabbit IgG at 1/20000 dilution

Predicted band size: 102 kD

Observed band size: 76 kD



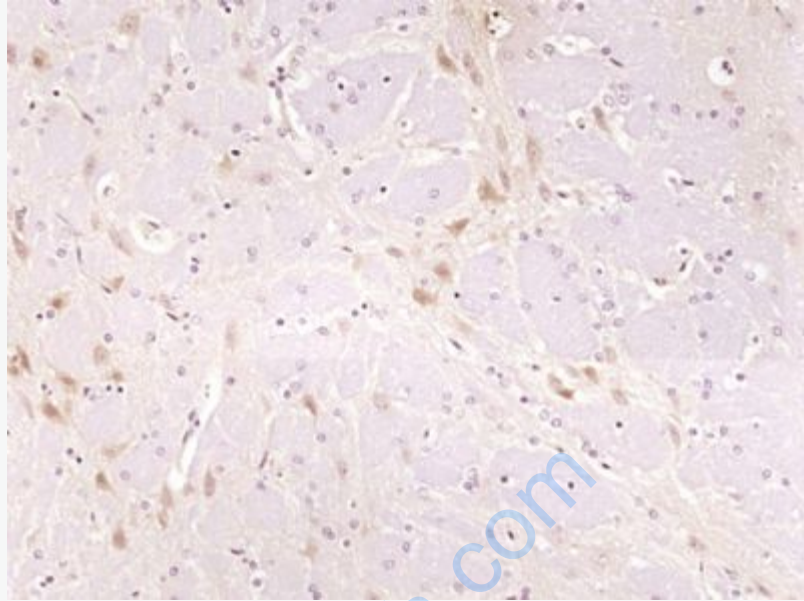
Sample: Brain (Mouse) Lysate at 40 ug

Primary: Anti-Synaptopodin (SL3633R) at 1/300 dilution

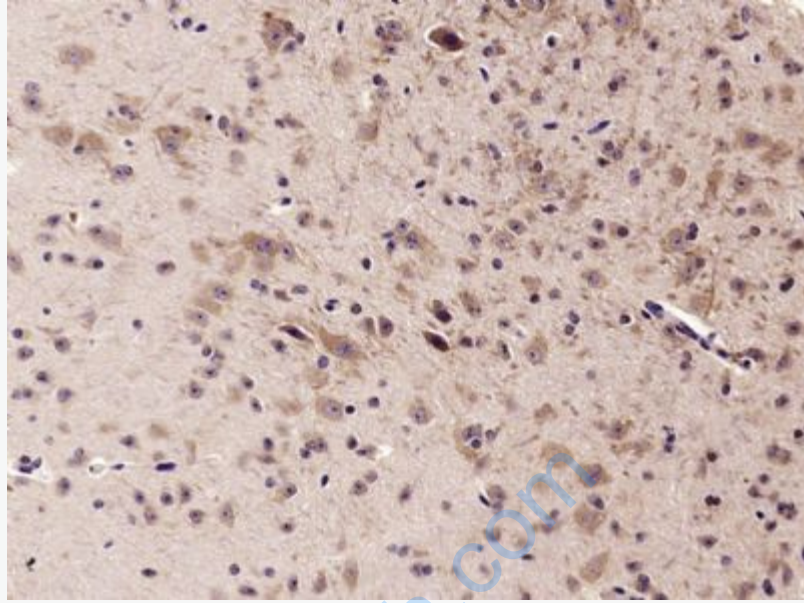
Secondary: IRDye800CW Goat Anti-Rabbit IgG at 1/20000 dilution

Predicted band size: 102 kD

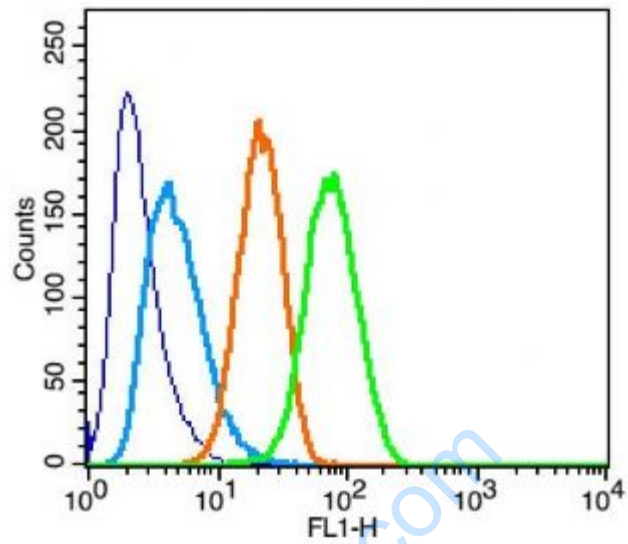
Observed band size: 102 kD



Paraformaldehyde-fixed, paraffin embedded (Rat brain); Antigen retrieval by boiling in sodium citrate buffer (pH6.0) for 15min; Block endogenous peroxidase by 3% hydrogen peroxide for 20 minutes; Blocking buffer (normal goat serum) at 37°C for 30min; Antibody incubation with (Synaptopodin) Polyclonal Antibody, Unconjugated (SL3633R) at 1:400 overnight at 4°C, followed by operating according to SP Kit(Rabbit) (sp-0023) instructions and DAB staining.



Paraformaldehyde-fixed, paraffin embedded (Mouse brain); Antigen retrieval by microwave in sodium citrate buffer (pH6.0) ; Block endogenous peroxidase by 3% hydrogen peroxide for 30 minutes; Blocking buffer (3% BSA) at RT for 30min; Antibody incubation with (Synaptopodin) Polyclonal Antibody, Unconjugated (SL3633R) at 1:400 overnight at 4°C, followed by conjugation to the secondary antibody (labeled with HRP) and DAB staining.



Key	Name	Parameter
—	RSC96-blank.026	FL1-H
—	bs-0295G-FITC-RSC96-1.027	FL1-H
—	bs-0295P(B)-(FITC)-R#1EF7AD.042	FL1-H
—	bs-3633R-(FITC)-RSC96-6-1.048	FL1-H

Positive control: RSC96

Isotype Control Antibody: Rabbit IgG; Secondary Antibody: Goat anti-rabbit IgG-FITC; Dilution: 1:200 in 1 X PBS containing 0.5% BSA

Primary Antibody catalog number: bs-3633R; Dilution: 1 $\mu$ g in 100  $\mu$ l 1X PBS containing 0.5% BSA