



Rabbit Anti-HRH3 antibody

SL3635R

Product Name:	HRH3
Chinese Name:	组织胺H3受体抗体
Alias:	G protein coupled receptor 97; GPCR 97; GPCR97; H3R; HH 3R; HH3 R; HH3R; Histamine H3 receptor; Histamine receptor H3; HRH 3; HRH3; HRH-3.
文献引用 PubMed :	<p>Specific References(1) SL3635R has been referenced in 1 publications.</p> <p>[IF=1.54]M?ller, M. Nue, et al. "Expression of histamine receptors in the human endolymphatic sac: the molecular rationale for betahistine use in Menieres disease." European Archives of Oto-Rhino-Laryngology: 1-6.IHC-P;Human.</p> <p>PubMed:26208913</p>
Organism Species:	Rabbit
Clonality:	Polyclonal
React Species:	Human,Mouse,Rat,Dog,Cow,Horse,
Applications:	WB=1:500-2000IHC-P=1:400-800IHC-F=1:400-800 (Paraffin sections need antigen repair) not yet tested in other applications. optimal dilutions/concentrations should be determined by the end user.
Molecular weight:	49kDa
Cellular localization:	The cell membrane
Form:	Lyophilized or Liquid
Concentration:	1mg/ml
immunogen:	KLH conjugated synthetic peptide derived from human HRH3/GPCR97:121-220/445
Lsotype:	IgG
Purification:	affinity purified by Protein A
Storage Buffer:	0.01M TBS(pH7.4) with 1% BSA, 0.03% Proclin300 and 50% Glycerol.
Storage:	Store at -20 °C for one year. Avoid repeated freeze/thaw cycles. The lyophilized antibody is stable at room temperature for at least one month and for greater than a year when kept at -20°C. When reconstituted in sterile pH 7.4 0.01M PBS or diluent of

	antibody the antibody is stable for at least two weeks at 2-4 °C.
PubMed:	PubMed
Product Detail:	<p>Histamine is a ubiquitous messenger molecule released from mast cells, enterochromaffin-like cells, and neurons. Its various actions are mediated by histamine receptors H1, H2, H3 and H4. This gene encodes one of the histamine receptors (H3) which belongs to the family 1 of G protein-coupled receptors. It is an integral membrane protein and can regulate neurotransmitter release. This receptor can also increase voltage-dependent calcium current in smooth muscles and innervates the blood vessels and the heart in cardiovascular system. [provided by RefSeq, Jul 2008].</p> <p>Function: The H3 subclass of histamine receptors could mediate the histamine signals in CNS and peripheral nervous system. Signals through the inhibition of adenylate cyclase and displays high constitutive activity (spontaneous activity in the absence of agonist). Agonist stimulation of isoform 3 neither modified adenylate cyclase activity nor induced intracellular calcium mobilization.</p> <p>Subcellular Location: Cell membrane; Multi-pass membrane protein.</p> <p>Tissue Specificity: Expressed predominantly in the CNS, with the greatest expression in the thalamus and caudate nucleus. The various isoforms are mainly coexpressed in brain, but their relative expression level varies in a region-specific manner. Isoform 3 and isoform 7 are highly expressed in the thalamus, caudate nucleus and cerebellum while isoform 5 and isoform 6 show a poor expression. Isoform 5 and isoform 6 show a high expression in the amygdala, substantia nigra, cerebral cortex and hypothalamus. Isoform 7 is not found in hypothalamus or substantia nigra.</p> <p>Similarity: Belongs to the G-protein coupled receptor 1 family.</p> <p>SWISS: Q9Y5N1</p> <p>Gene ID: 11255</p> <p>Database links: Entrez Gene: 11255Human Entrez Gene: 99296Mouse Entrez Gene: 85268Rat Omim: 604525Human</p>

[SwissProt: Q9Y5N1](#)Human

[SwissProt: P58406](#)Mouse

[SwissProt: Q9QYN8](#)Rat

[Unigene: 251399](#)Human

[Unigene: 285360](#)Mouse

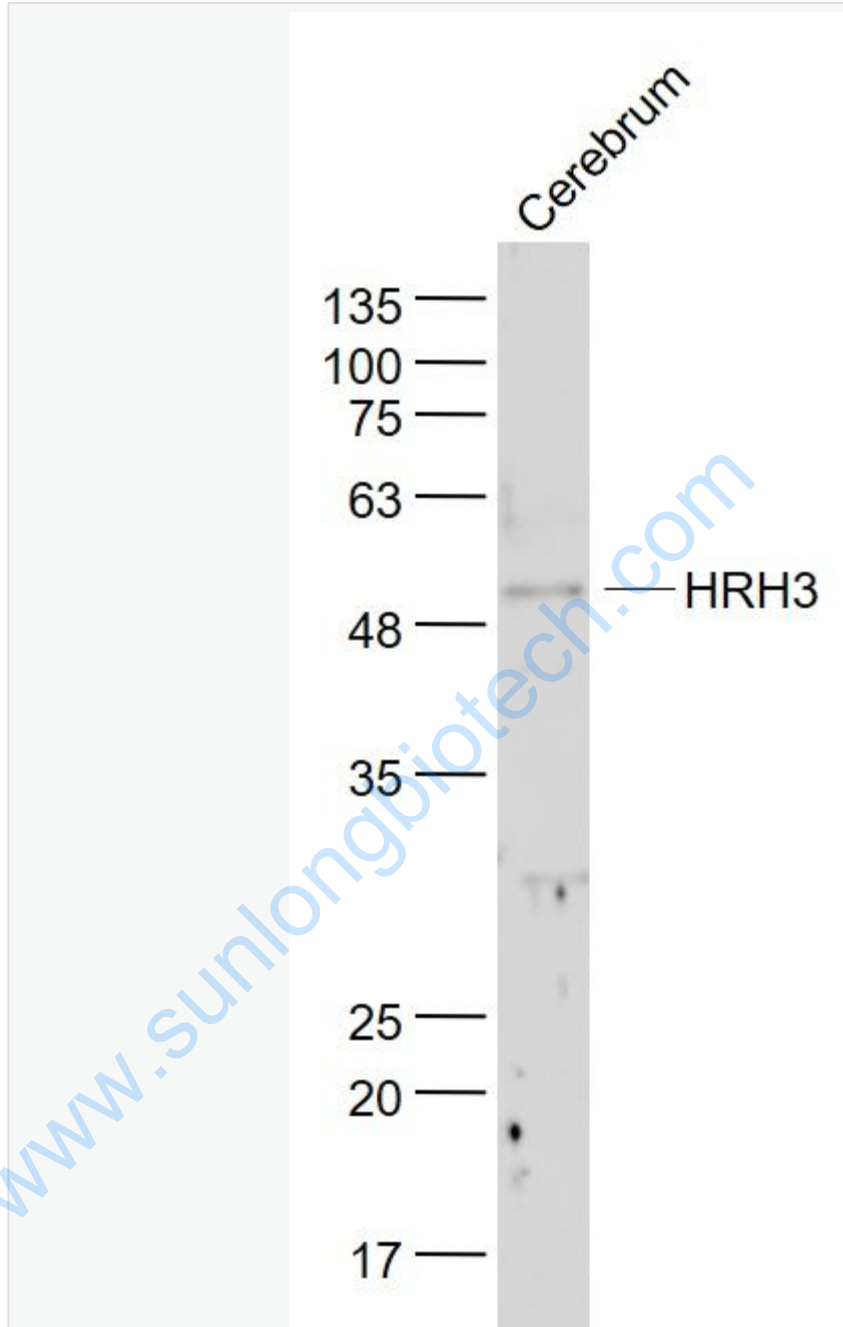
[Unigene: 7617](#)Rat

Important Note:

This product as supplied is intended for research use only, not for use in human, therapeutic or diagnostic applications.

www.sunlongbiotech.com

Picture:



Sample:

Cerebrum (Rat) Lysate at 40 ug

Primary: Anti- HRH3 (SL3635R) at 1/1000 dilution

Secondary: IRDye800CW Goat Anti-Rabbit IgG at 1/20000 dilution

Predicted band size: 49 kD

Observed band size: 50 kD

www.sunlongbiotech.com