



Rabbit Anti-KLF9 antibody

SL3644R

Product Name:	KLF9
Chinese Name:	转录因子KLF9抗体
Alias:	Basic transcription element binding protein 1; BTE binding protein 1; BTEB 1; BTEB; BTEB1; GC box binding protein 1; KLF 9; Krueppel like factor 9; Transcription factor BTEB 1; Transcription factor BTEB1.
Organism Species:	Rabbit
Clonality:	Polyclonal
React Species:	Human,Mouse,Rat,Chicken,Dog,Pig,Cow,Horse,Rabbit,
Applications:	WB=1:500-2000ELISA=1:500-1000IHC-P=1:400-800IHC-F=1:400-800IF=1:100-500 (Paraffin sections need antigen repair) not yet tested in other applications. optimal dilutions/concentrations should be determined by the end user.
Molecular weight:	27kDa
Cellular localization:	The nucleus
Form:	Lyophilized or Liquid
Concentration:	1mg/ml
immunogen:	KLH conjugated synthetic peptide derived from human KLF9:151-244/244
Lsotype:	IgG
Purification:	affinity purified by Protein A
Storage Buffer:	0.01M TBS(pH7.4) with 1% BSA, 0.03% Proclin300 and 50% Glycerol.
Storage:	Store at -20 °C for one year. Avoid repeated freeze/thaw cycles. The lyophilized antibody is stable at room temperature for at least one month and for greater than a year when kept at -20°C. When reconstituted in sterile pH 7.4 0.01M PBS or diluent of antibody the antibody is stable for at least two weeks at 2-4 °C.
PubMed:	PubMed
Product Detail:	KLF9 is a transcription factor that binds to GC box promoter elements. It activates mRNA synthesis selectively from genes containing tandem repeats of GC boxes but represses genes with a single GC box. KLF9 belongs to the Sp1 C2H2 type zinc finger protein family.

SWISS:
Q13886

Gene ID:
687

Database links:

[Entrez Gene: 687](#)Human

[Entrez Gene: 16601](#)Mouse

[Entrez Gene: 117560](#)Rat

[Omim: 602902](#)Human

[SwissProt: Q13886](#)Human

[SwissProt: O35739](#)Mouse

[SwissProt: Q01713](#)Rat

[Unigene: 150557](#)Human

[Unigene: 602267](#)Human

[Unigene: 291595](#)Mouse

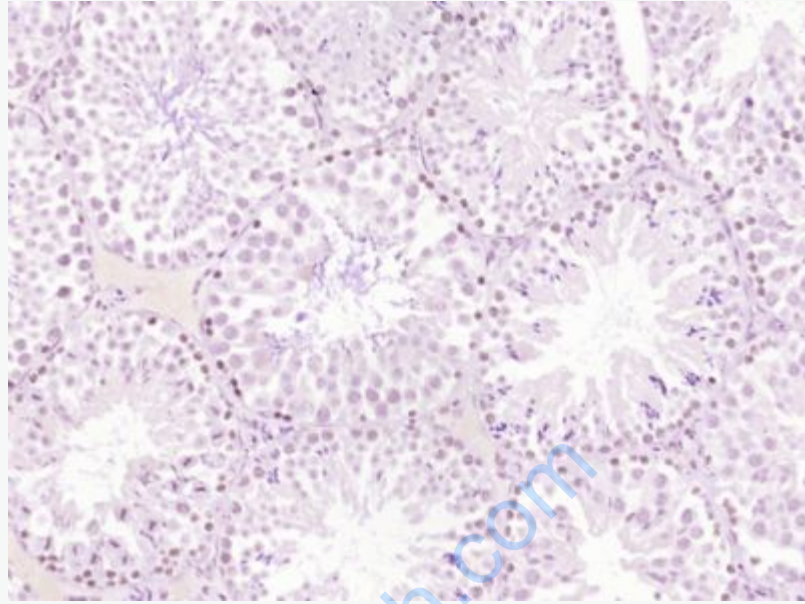
[Unigene: 392684](#)Mouse

[Unigene: 19481](#)Rat

Important Note:

This product as supplied is intended for research use only, not for use in human, therapeutic or diagnostic applications.

KLF9(BTEB)属于Krueppel样转录因子家族成员之一，是参与真核细胞基因转录调控的Zinc finger protein，主要通过羧基末端锌指与靶基因启动子区的GC或GT/CAC box结合调节靶基因的转录。KLF9与其他转录因子、和辅助激活抑制因子相互作用完成对基因转录的调控，在生殖发育、细胞增殖分化、细胞周期调控等方面发挥作用。



Picture:

Paraformaldehyde-fixed, paraffin embedded (Mouse testis); Antigen retrieval by boiling in sodium citrate buffer (pH6.0) for 15min; Block endogenous peroxidase by 3% hydrogen peroxide for 20 minutes; Blocking buffer (normal goat serum) at 37°C for 30min; Antibody incubation with (KLF9) Polyclonal Antibody, Unconjugated (SL3644R) at 1:400 overnight at 4°C, followed by operating according to SP Kit(Rabbit) (sp-0023) instructions and DAB staining.