



## Rabbit Anti-MAGEA4 antibody

SL3645R

<b>Product Name:</b>	MAGEA4
<b>Chinese Name:</b>	黑色素瘤相关抗原4抗体
<b>Alias:</b>	MAGE 4; MAGE-A4;MAGE 4 antigen; MAGE 41; MAGE 41 antigen; MAGE 4A; MAGE 4B; MAGE X2; MAGE X2 antigen; MAGE4; MAGE41; MAGE4A; MAGE4B; MAGEA 4; MAGEA4; Melanoma antigen family A 4; Melanoma associated antigen 4; Cancer/testis antigen 1.4; CT1.4.
<b>Organism Species:</b>	Rabbit
<b>Clonality:</b>	Polyclonal
<b>React Species:</b>	Human,
<b>Applications:</b>	WB=1:500-2000ELISA=1:500-1000IHC-P=1:400-800IHC-F=1:400-800IF=1:100-500 (Paraffin sections need antigen repair) not yet tested in other applications. optimal dilutions/concentrations should be determined by the end user.
<b>Molecular weight:</b>	35kDa
<b>Cellular localization:</b>	The nucleuscytoplasmic
<b>Form:</b>	Lyophilized or Liquid
<b>Concentration:</b>	1mg/ml
<b>immunogen:</b>	KLH conjugated synthetic peptide derived from human MAGE-A4:110-210/317
<b>Lsotype:</b>	IgG
<b>Purification:</b>	affinity purified by Protein A
<b>Storage Buffer:</b>	0.01M TBS(pH7.4) with 1% BSA, 0.03% Proclin300 and 50% Glycerol.
<b>Storage:</b>	Store at -20 °C for one year. Avoid repeated freeze/thaw cycles. The lyophilized antibody is stable at room temperature for at least one month and for greater than a year when kept at -20°C. When reconstituted in sterile pH 7.4 0.01M PBS or diluent of antibody the antibody is stable for at least two weeks at 2-4 °C.
<b>PubMed:</b>	<a href="#">PubMed</a>
<b>Product Detail:</b>	This gene is a member of the MAGEA gene family. The members of this family encode proteins with 50 to 80% sequence identity to each other. The promoters and first exons of the MAGEA genes show considerable variability, suggesting that the existence of this gene family enables the same function to be expressed under different

transcriptional controls. The MAGEA genes are clustered at chromosomal location Xq28. They have been implicated in some hereditary disorders, such as dyskeratosis congenita. At least four variants encoding the same protein have been found for this gene. [provided by RefSeq, Jul 2008].

**Tissue Specificity:**

Expressed in many tumors of several types, such as melanoma, head and neck squamous cell carcinoma, lung carcinoma and breast carcinoma, but not in normal tissues except for testes and placenta.

**Similarity:**

Contains 1 MAGE domain.

**SWISS:**

P43358

**Gene ID:**

4103

**Database links:**

[Entrez Gene: 4103](#)Human

[Entrez Gene: 17140](#)Mouse

[Entrez Gene: 689858](#)Rat

[Oimim: 300175](#)Human

[SwissProt: P43358](#)Human

[Unigene: 37107](#)Human

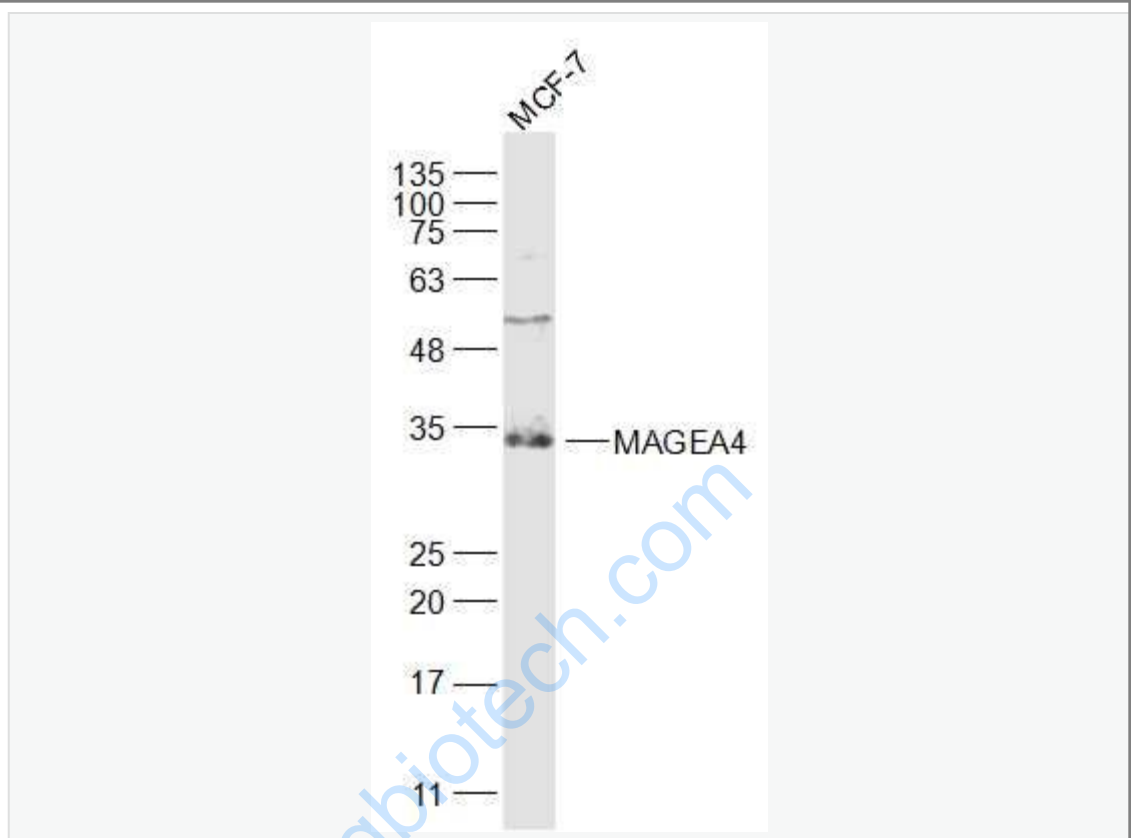
[Unigene: 377097](#)Mouse

[Unigene: 218695](#)Rat

**Important Note:**

This product as supplied is intended for research use only, not for use in human, therapeutic or diagnostic applications.

Picture:



Sample:

MCF-7(Human) Cell Lysate at 30 ug

Primary: Anti-MAGEA4 (SL3645R) at 1/1000 dilution

Secondary: IRDye800CW Goat Anti-Rabbit IgG at 1/20000 dilution

Predicted band size: 35 kD

Observed band size: 35 kD