




Rabbit Anti-KEAP1 antibody

SL3648R

Product Name:	KEAP1
Chinese Name:	胞质接头蛋白Keap1抗体
Alias:	Cytosolic inhibitor of Nrf2; INrf 2; INrf2; Keap 1; KEAP1; KEAP1_HUMAN; Kelch like ECH associated protein 1; Kelch like protein 19; Kelch-like ECH-associated protein 1; Kelch-like protein 19; KIAA0132; KLHL 19; KLHL19; MGC10630; MGC1114; MGC20887; MGC4407; MGC9454.
文献引用  :	<p>Specific References(4) SL3648R has been referenced in 4 publications.</p> <p>[IF=4.19]Su, Chuanyang, et al. "Tetrachlorobenzoquinone activates Nrf2 signaling by Keap1 cross-linking and ubiquitin translocation, but not Keap1-Cullin3 complex dissociation." Chemical Research in Toxicology (2015).WB;Human. PubMed:25742418</p> <p>[IF=3.11]Su, Chuanyang, et al. "Neohesperidin dihydrochalcone against CCl4-induced hepatic injury through different mechanisms The implication of free radical scavenging and Nrf2 activation." Journal of Agricultural and Food Chemistry(2015).WB;Human. PubMed:25978654</p> <p>[IF=3.23]Chen, Ya-Hui, et al. "Caveolin-1 Expression Ameliorates Nephrotic Damage in a Rabbit Model of Cholesterol-Induced Hypercholesterolemia." PLOS ONE11.4 (2016); e0154210.WB, IHC-P;Rabbit. PubMed:27124120</p> <p>[IF=3.58]Su, Chuanyang, et al. "The electrophilic character of quinones is essential for the suppression of Bach1." Toxicology (2017). PubMed:28645578</p>
Organism Species:	Rabbit

Clonality:	Polyclonal
React Species:	Human, Mouse, Rat, Dog, Pig, Cow, Rabbit,
Applications:	WB=1:500-2000 ELISA=1:500-1000 IHC-P=1:400-800 IHC-F=1:400-800 IF=1:100-500 (Paraffin sections need antigen repair) not yet tested in other applications. optimal dilutions/concentrations should be determined by the end user.
Molecular weight:	69kDa
Cellular localization:	The nucleus/cytoplasmic
Form:	Lyophilized or Liquid
Concentration:	1mg/ml
immunogen:	KLH conjugated synthetic peptide derived from human KEAP1:65-160/624
Lsotype:	IgG
Purification:	affinity purified by Protein A
Storage Buffer:	0.01M TBS(pH7.4) with 1% BSA, 0.03% Proclin300 and 50% Glycerol.
Storage:	Store at -20 °C for one year. Avoid repeated freeze/thaw cycles. The lyophilized antibody is stable at room temperature for at least one month and for greater than a year when kept at -20°C. When reconstituted in sterile pH 7.4 0.01M PBS or diluent of antibody the antibody is stable for at least two weeks at 2-4 °C.
PubMed:	PubMed
Product Detail:	<p>This gene encodes a protein containing KELCH-1 like domains, as well as a BTB/POZ domain. Kelch-like ECH-associated protein 1 interacts with NF-E2-related factor 2 in a redox-sensitive manner and the dissociation of the proteins in the cytoplasm is followed by transportation of NF-E2-related factor 2 to the nucleus. This interaction results in the expression of the catalytic subunit of gamma-glutamylcysteine synthetase. Two alternatively spliced transcript variants encoding the same isoform have been found for this gene. [provided by RefSeq, Jul 2008].</p> <p>Function: Retains NFE2L2/NRF2 in the cytosol. Functions as substrate adapter protein for the E3 ubiquitin ligase complex formed by CUL3 and RBX1. Targets NFE2L2/NRF2 for ubiquitination and degradation by the proteasome, thus resulting in the suppression of its transcriptional activity and the repression of antioxidant response element-mediated detoxifying enzyme gene expression. May also retain BPTF in the cytosol. Targets PGAM5 for ubiquitination and degradation by the proteasome.</p> <p>Subunit: Homodimer. Forms a ternary complex with NFE2L2 and PGAM5. Interacts with the N-terminal regulatory domain of NFE2L2/NRF2. Interacts with BPTF and PTMA. Interacts with CUL3. Part of a complex that contains KEAP1, CUL3 and RBX1.</p> <p>Subcellular Location: Cytoplasm. Nucleus. Note=Shuttles between cytoplasm and nucleus.</p> <p>Tissue Specificity: Broadly expressed, with highest levels in skeletal muscle.</p>

Similarity:

Contains 1 BACK (BTB/Kelch associated) domain.
Contains 1 BTB (POZ) domain.
Contains 6 Kelch repeats.

SWISS:

Q14145

Gene ID:

9817

Database links:

[Entrez Gene: 9817](#)Human

[Entrez Gene: 50868](#)Mouse

[Entrez Gene: 100136900](#)Pig

[Entrez Gene: 117519](#)Rat

[Omim: 606016](#)Human

[SwissProt: Q14145](#)Human

[SwissProt: Q9Z2X8](#)Mouse

[SwissProt: Q684M4](#)Pig

[SwissProt: P57790](#)Rat

[Unigene: 465870](#)Human

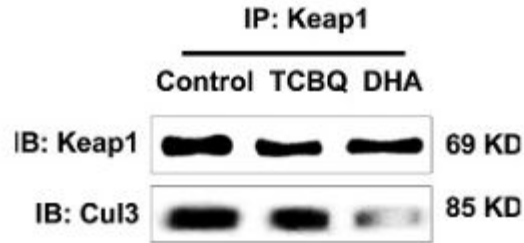
[Unigene: 248266](#)Mouse

[Unigene: 23467](#)Rat

Important Note:

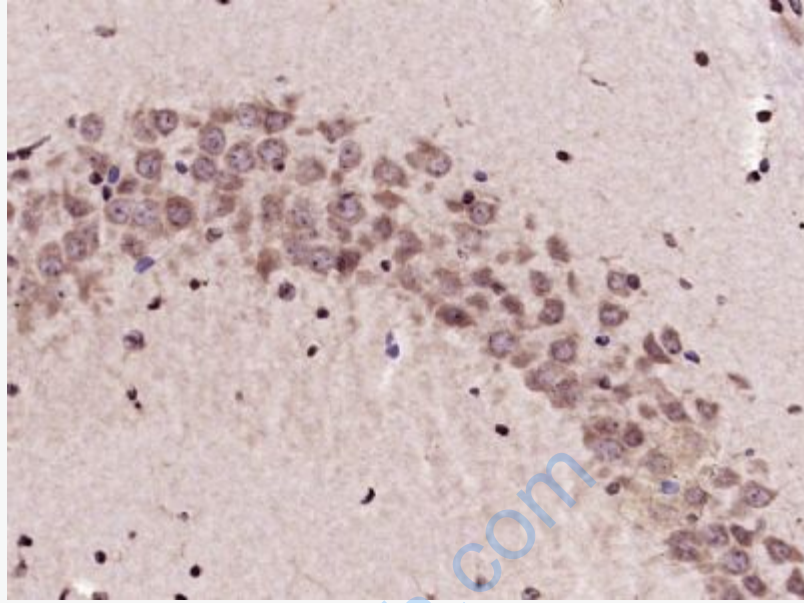
This product as supplied is intended for research use only, not for use in human, therapeutic or diagnostic applications.

Keap1是细胞抗氧化反应的重要调节蛋白, Keap1与Nrf2/ARE构成的信号通路在抗肿瘤、抗应激、调节GSH合成、抗凋亡、抗炎反应、神经保护等方面发挥着广泛的细胞保护作用。

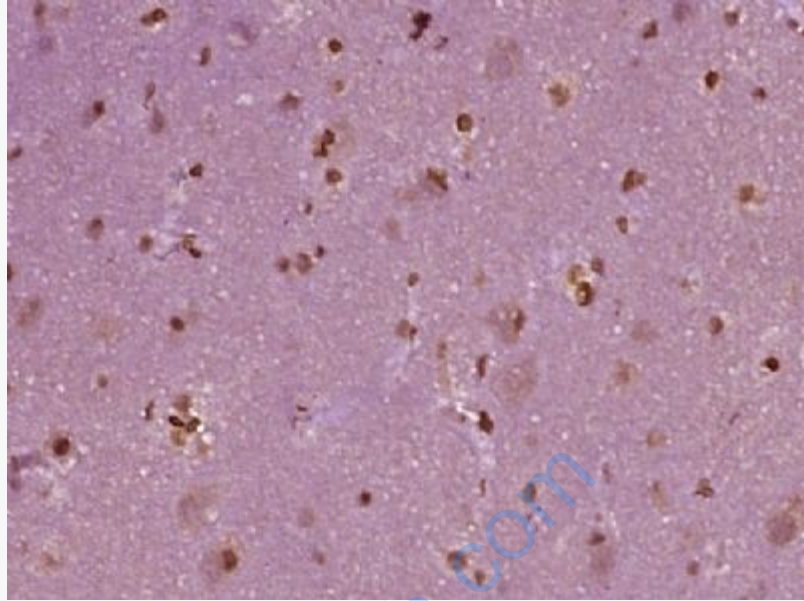


Picture:

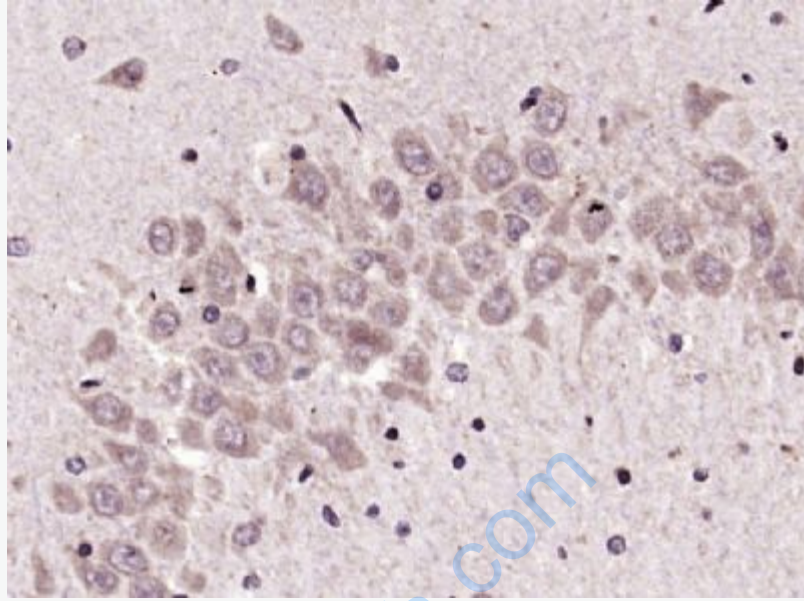
This image was generously provided by Yang Song, Ph.D. at Southwest University in Chong Qing, China. HepG2 cells were incubated with Rabbit Anti-KEAP1 Polyclonal Antibody (SL3648R) at 4°C overnight and then mixed with Protein A agarose beads at 4°C for 3hrs. The solutions were centrifuged and the pellets were washed with lysis buffer, heated, and subsequently analyzed by Western blotting.



Paraformaldehyde-fixed, paraffin embedded (Mouse brain); Antigen retrieval by microwave in sodium citrate buffer (pH6.0) ; Block endogenous peroxidase by 3% hydrogen peroxide for 30 minutes; Blocking buffer (3% BSA) at RT for 30min; Antibody incubation with (KEAP1) Polyclonal Antibody, Unconjugated (SL3648R) at 1:400 overnight at 4°C, followed by conjugation to the secondary antibody (labeled with HRP) and DAB staining.



Paraformaldehyde-fixed, paraffin embedded (human brain glioma); Antigen retrieval by boiling in sodium citrate buffer (pH6.0) for 15min; Block endogenous peroxidase by 3% hydrogen peroxide for 20 minutes; Blocking buffer (normal goat serum) at 37°C for 30min; Antibody incubation with (KEAP1) Polyclonal Antibody, Unconjugated (SL3648R) at 1:400 overnight at 4°C, followed by operating according to SP Kit(Rabbit) (sp-0023) instructions and DAB staining.



Paraformaldehyde-fixed, paraffin embedded (Rat brain); Antigen retrieval by microwave in sodium citrate buffer (pH6.0) ; Block endogenous peroxidase by 3% hydrogen peroxide for 30 minutes; Blocking buffer (3% BSA) at RT for 30min; Antibody incubation with (KEAP1) Polyclonal Antibody, Unconjugated (SL3648R) at 1:400 overnight at 4°C, followed by conjugation to the secondary antibody (labeled with HRP) and DAB staining.