



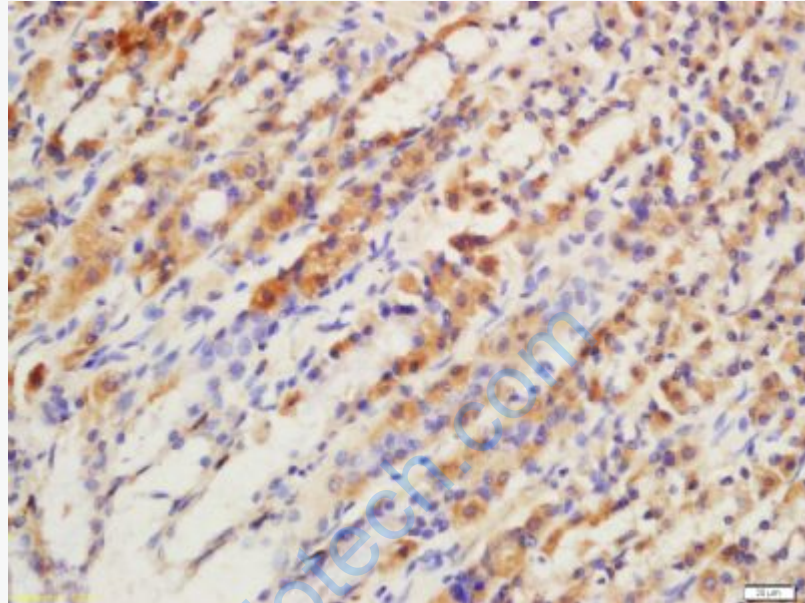
Rabbit Anti-GPR15 antibody

SL3699R

Product Name:	GPR15
Chinese Name:	G protein-coupled receptor15抗体
Alias:	GPCR GPR15; BOB; G protein coupled receptor 15; G protein coupled receptor GPR15; GPR15 HUMAN; G-protein coupled receptor 15; Brother of Bonzo.
文献引用 PubMed :	Specific References(1) SL3699R has been referenced in 1 publications. [IF=14.66] Fischer, Anika, et al. "Differential effects of $\alpha 4\beta 7$ and GPR15 on homing of effector and regulatory T cells from patients with UC to the inflamed gut in vivo." Gut (2015): gutjnl-2015.IHC-F;Human. PubMed:26209553
Organism Species:	Rabbit
Clonality:	Polyclonal
React Species:	Human,Mouse,Rat,Dog,Horse,Rabbit,
Applications:	ELISA=1:500-1000IHC-P=1:400-800IHC-F=1:400-800ICC=1:100-500IF=1:200-800 (Paraffin sections need antigen repair) not yet tested in other applications. optimal dilutions/concentrations should be determined by the end user.
Molecular weight:	40kDa
Cellular localization:	cytoplasmicThe cell membrane
Form:	Lyophilized or Liquid
Concentration:	1mg/ml
immunogen:	KLH conjugated synthetic peptide derived from human GPR15:51-150/360<Extracellular>
Lsotype:	IgG
Purification:	affinity purified by Protein A
Storage Buffer:	0.01M TBS(pH7.4) with 1% BSA, 0.03% Proclin300 and 50% Glycerol.
Storage:	Store at -20 °C for one year. Avoid repeated freeze/thaw cycles. The lyophilized antibody is stable at room temperature for at least one month and for greater than a year

	when kept at -20°C. When reconstituted in sterile pH 7.4 0.01M PBS or diluent of antibody the antibody is stable for at least two weeks at 2-4 °C.
PubMed:	PubMed
Product Detail:	<p>This gene encodes a G protein-coupled receptor that acts as a chemokine receptor for human immunodeficiency virus type 1 and 2. The encoded protein localizes to the cell membrane. [provided by RefSeq, Nov 2012]</p> <p>Function: Probable chemokine receptor. Alternative coreceptor with CD4 for HIV-1 infection.</p> <p>Subcellular Location: Cell membrane; Multi-pass membrane protein.</p> <p>Similarity: Belongs to the G-protein coupled receptor 1 family.</p> <p>SWISS: P49685</p> <p>Gene ID: 2838</p> <p>Database links: Entrez Gene: 2838Human Entrez Gene: 71223Mouse Entrez Gene: 288181Rat Omim: 601166Human SwissProt: P49685Human SwissProt: Q0VDU3Mouse Unigene: 563128Human Unigene: 359970Mouse Unigene: 426544Mouse</p> <p>Important Note: This product as supplied is intended for research use only, not for use in human, therapeutic or diagnostic applications.</p> <p>G protein-coupled receptor是一种细胞表面受体, 能将细胞外的分子信号传递至细胞内激起细胞反应,</p>

对多种细胞行起调控作用。G protein-coupled receptor(GPCR)参与了机体内多种生理过程的调节,是目前治疗多种人类疾病包括代谢性疾病的药物靶点。

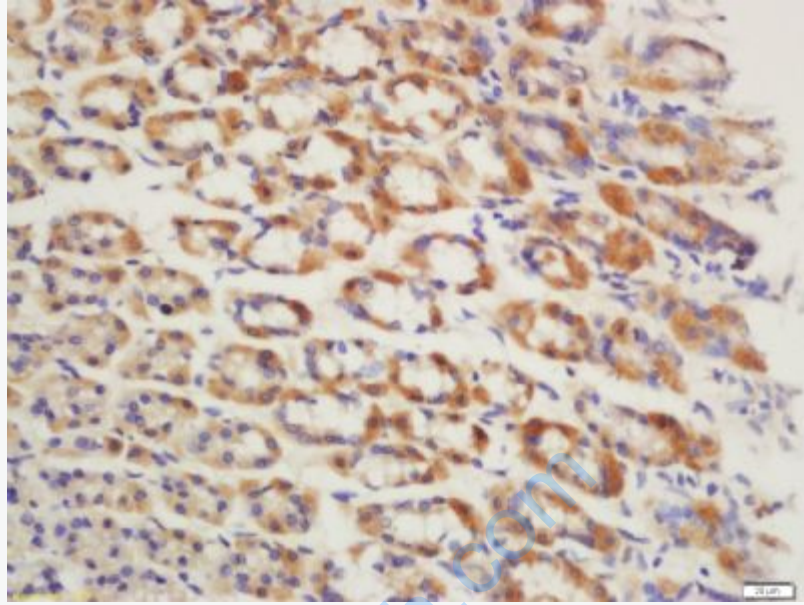


Picture:

Tissue/cell: rat stomach tissue; Frozen section;

Block endogenous peroxidase by 3% Hydrogen peroxide for 30min; Blocking buffer (normal goat serum,C-0005) at 37°C for 20 min;

Incubation: Anti-GPR15 Polyclonal Antibody, Unconjugated(SL3699R) 1:200, overnight at 4°C, followed by conjugation to the secondary antibody(SP-0023) and DAB(C-0010) staining



Tissue/cell: Mouse stomach tissue; 4% Paraformaldehyde-fixed and paraffin-embedded;

Antigen retrieval: citrate buffer (0.01M, pH 6.0), Boiling bathing for 15min; Block endogenous peroxidase by 3% Hydrogen peroxide for 30min; Blocking buffer (normal goat serum,C-0005) at 37°C for 20 min;

Incubation: Anti-GPR15 Polyclonal Antibody, Unconjugated(SL3699R) 1:200, overnight at 4°C, followed by conjugation to the secondary antibody(SP-0023) and DAB(C-0010) staining