



## Rabbit Anti-Somatostatin antibody

SL37040R

<b>Product Name:</b>	Somatostatin
<b>Chinese Name:</b>	生长抑素14抗体
<b>Alias:</b>	GRIH; Growth hormone release inhibiting factor; SMS_HUMAN; SMST; SST; Somatostatin 14; Somatostatin14; Somatostatin-14; somatostatin SS14; Somatostatin 28; Somatostatin28; Somatostatin-28; somatostatin SS28.
<b>Organism Species:</b>	Rabbit
<b>Clonality:</b>	Polyclonal
<b>React Species:</b>	Human,Mouse,Rat,Chicken,Pig,Cow,Sheep,
<b>Applications:</b>	ELISA=1:500-1000IHC-P=1:400-800IHC-F=1:400-800ICC=1:100-500IF=1:100-500 (Paraffin sections need antigen repair) not yet tested in other applications. optimal dilutions/concentrations should be determined by the end user.
<b>Molecular weight:</b>	13kDa
<b>Cellular localization:</b>	Secretory protein
<b>Form:</b>	Lyophilized or Liquid
<b>Concentration:</b>	1mg/1ml
<b>immunogen:</b>	KLH conjugated synthetic peptide derived from human Somatostatin:103-116/116(disulfide 105,116)
<b>Lsotype:</b>	IgG
<b>Purification:</b>	affinity purified by Protein A
<b>Storage Buffer:</b>	0.01M TBS(pH7.4) with 1% BSA, 0.03% Proclin300 and 50% Glycerol.
<b>Storage:</b>	Store at -20 °C for one year. Avoid repeated freeze/thaw cycles. The lyophilized antibody is stable at room temperature for at least one month and for greater than a year when kept at -20°C. When reconstituted in sterile pH 7.4 0.01M PBS or diluent of antibody the antibody is stable for at least two weeks at 2-4 °C.
<b>PubMed:</b>	<a href="#">PubMed</a>
<b>Product Detail:</b>	The hormone somatostatin has active 14 aa and 28 aa forms that are produced by alternate cleavage of the single preproprotein encoded by this gene. Somatostatin is expressed throughout the body and inhibits the release of numerous secondary hormones by binding to high-affinity G-protein-coupled somatostatin receptors. This hormone is

an important regulator of the endocrine system through its interactions with pituitary growth hormone, thyroid stimulating hormone, and most hormones of the gastrointestinal tract. Somatostatin also affects rates of neurotransmission in the central nervous system and proliferation of both normal and tumorigenic cells. [provided by RefSeq, Jul 2008].

**Function:**

Somatostatin inhibits the release of somatotropin.

**Subcellular Location:**

Secreted.

**Similarity:**

Belongs to the somatostatin family.

**SWISS:**

P61278

**Gene ID:**

6750

**Database links:**

[Entrez Gene: 396279](#)Chicken

[Entrez Gene: 280932](#)Cow

[Entrez Gene: 6750](#)Human

[Entrez Gene: 20604](#)Mouse

[Entrez Gene: 24797](#)Rat

[Omim: 182450](#)Human

[SwissProt: P33094](#)Chicken

[SwissProt: P26917](#)Cow

[SwissProt: P61278](#)Human

[SwissProt: P60041](#)Mouse

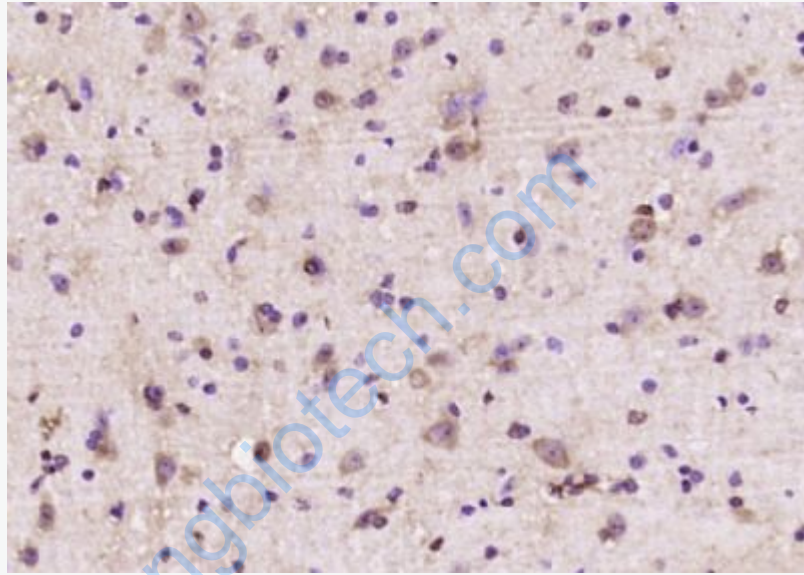
[SwissProt: P60042](#)Rat

[Unigene: 12409](#)Human

[Unigene: 34418](#)Rat

**Important Note:**

This product as supplied is intended for research use only, not for use in human, therapeutic or diagnostic applications.



**Picture:**

Paraformaldehyde-fixed, paraffin embedded (mouse brain); Antigen retrieval by boiling in sodium citrate buffer (pH6.0) for 15min; Block endogenous peroxidase by 3% hydrogen peroxide for 20 minutes; Blocking buffer (normal goat serum) at 37°C for 30min; Antibody incubation with (Somatostatin) Polyclonal Antibody, Unconjugated (SL37040R) at 1:200 overnight at 4°C, followed by operating according to SP Kit(Rabbit) (sp-0023) instructions and DAB staining.