



Rabbit Anti-Phospho-Talin (Ser425) antibody

SL3719R

Product Name:	Phospho-Talin (Ser425)
Chinese Name:	磷酸化踝蛋白抗体
Alias:	Talin 1 (phospho S425); p-Talin 1 (phospho S425); TLN 1; ILWEQ; Talin 1; Talin; TLN; TLN1; TLN1 HUMAN.
Organism Species:	Rabbit
Clonality:	Polyclonal
React Species:	Human,Mouse,Rat,Chicken,Dog,Pig,Cow,Horse,Rabbit,
Applications:	ELISA=1:500-1000IHC-P=1:400-800IHC-F=1:400-800ICC=1:100-500IF=1:100-500 (Paraffin sections need antigen repair) not yet tested in other applications. optimal dilutions/concentrations should be determined by the end user.
Molecular weight:	280kDa
Cellular localization:	cytoplasmicThe cell membrane
Form:	Lyophilized or Liquid
Concentration:	1mg/ml
immunogen:	KLH conjugated Synthesised phosphopeptide derived from human Talin around the phosphorylation site of Ser425:SV(p-S)PK
Lsotype:	IgG
Purification:	affinity purified by Protein A
Storage Buffer:	0.01M TBS(pH7.4) with 1% BSA, 0.03% Proclin300 and 50% Glycerol.
Storage:	Store at -20 °C for one year. Avoid repeated freeze/thaw cycles. The lyophilized antibody is stable at room temperature for at least one month and for greater than a year when kept at -20°C. When reconstituted in sterile pH 7.4 0.01M PBS or diluent of antibody the antibody is stable for at least two weeks at 2-4 °C.
PubMed:	PubMed
Product Detail:	Talin, a multifunctional constituent of cell-substratum attachment sites, is a high molecular weight protein (225-270 kDa) found in variety of tissues and cell types. It is localized at a subset of adherens junctions, specialized cell-cell and cell-matrix associations that are characterized by the presence of filamentous actin at the

cytoplasmic face of the junctional complex. In cultured cells, talin is absent from cell-cell junctions and found predominantly at adhesion plaques and in fibrillar streaks underlying cell surface fibronectin. Talin interacts with at least two other proteins that are localized at adhesion plaques, vinculin and integrin. Talin and vinculin have been shown to interact with each other and both have been proposed to be involved in generating the transmembrane connection, between the extracellular matrix and the cytoskeleton, that occurs at adhesion plaques. At physiological ionic strength, talin is an elongate, flexible, monomeric protein with the ability to self-associate into dimers at higher protein concentrations.

Function:

Probably involved in connections of major cytoskeletal structures to the plasma membrane. High molecular weight cytoskeletal protein concentrated at regions of cell-substratum contact and, in lymphocytes, at cell-cell contacts.

Subunit:

Binds with high affinity to VCL and with low affinity to integrins. Interacts with PTK2/FAK1. Interacts with PIP5K1C and NRAP. Interacts with LAYN. Interacts with SYNM.

Subcellular Location:

Cell projection, ruffle membrane; Peripheral membrane protein; Cytoplasmic side. Cytoplasm, cytoskeleton. Note=Colocalizes with LAYN at the membrane ruffles.

Similarity:

Contains 1 FERM domain.
Contains 1 I/LWEQ domain.

SWISS:

Q9Y490

Gene ID:

7094

Database links:

[Entrez Gene: 395194](#)Chicken

[Entrez Gene: 7094](#)Human

[Entrez Gene: 21894](#)Mouse

[Entrez Gene: 313494](#)Rat

[Omim: 186745](#)Human

[SwissProt: P54939](#)Chicken

[SwissProt: Q9Y490](#)Human

[SwissProt: P26039](#)Mouse

[Unigene: 471014](#)Human

[Unigene: 208601](#)Mouse

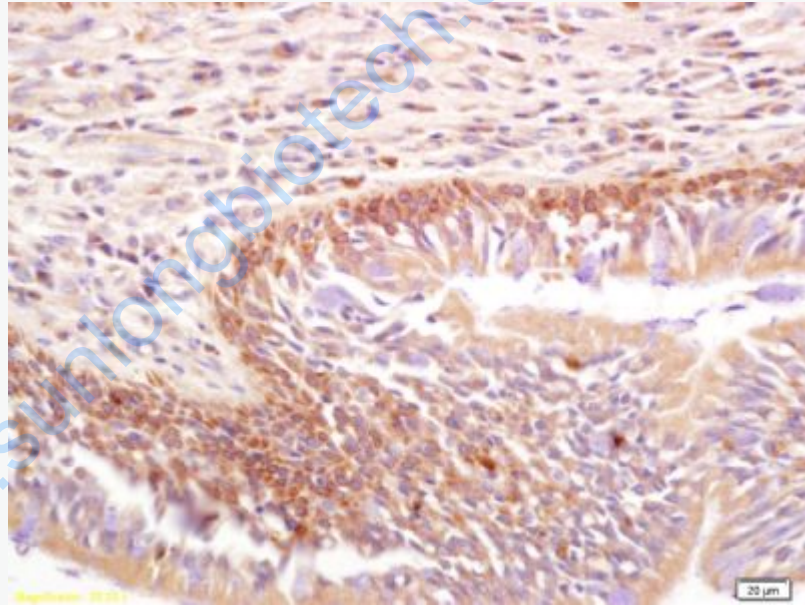
[Unigene: 7715](#)Rat

Important Note:

This product as supplied is intended for research use only, not for use in human, therapeutic or diagnostic applications.

TALIN-踝蛋白。是重要的Cytoskeleton肌动蛋白Binding protein, 由两个270kDa的亚单位组成的反向平行的同源二聚体, 与整合蛋白B尾部的结合诱导了整合蛋白胞外结构域构象的改变,起到了对整合蛋白的激活。

Picture:



Tissue/cell: human lung carcinoma; 4% Paraformaldehyde-fixed and paraffin-embedded;

Antigen retrieval: citrate buffer (0.01M, pH 6.0), Boiling bathing for 15min; Block endogenous peroxidase by 3% Hydrogen peroxide for 30min; Blocking buffer (normal goat serum,C-0005) at 37°C for 20 min;

Incubation: Anti-Phospho-Talin(Ser425) Polyclonal Antibody,

	Unconjugated(SL3719R) 1:200, overnight at 4°C, followed by conjugation to the secondary antibody(SP-0023) and DAB(C-0010) staining
--	--

www.sunlongbiotech.com