



Rabbit Anti-phospho-Crkl (Tyr251) antibody

SL3738R

Product Name:	phospho-Crkl (Tyr251)
Chinese Name:	磷酸化接头蛋白CrkL抗体
Alias:	Crk L; Crk like protein; Crkol; HGNC:2363; Oncogene CrkL; V crk avian sarcoma virus CT10 oncogene homolog like; V crk sarcoma virus CT10 oncogene homolog avian like; CRKL_HUMAN.
Organism Species:	Rabbit
Clonality:	Polyclonal
React Species:	Human,Mouse,Rat,Dog,Pig,Cow,Horse,Rabbit,Sheep,
Applications:	WB=1:500-2000ELISA=1:500-1000IHC-P=1:400-800IHC-F=1:400-800IF=1:100-500 (Paraffin sections need antigen repair) not yet tested in other applications. optimal dilutions/concentrations should be determined by the end user.
Molecular weight:	34kDa
Cellular localization:	The nucleuscytoplasmic
Form:	Lyophilized or Liquid
Concentration:	1mg/ml
immunogen:	KLH conjugated Synthesised phosphopeptide derived from human Crkl around the phosphorylation site of Tyr251:CA(p-Y)D
Lsotype:	IgG
Purification:	affinity purified by Protein A
Storage Buffer:	0.01M TBS(pH7.4) with 1% BSA, 0.03% Proclin300 and 50% Glycerol.
Storage:	Store at -20 °C for one year. Avoid repeated freeze/thaw cycles. The lyophilized antibody is stable at room temperature for at least one month and for greater than a year when kept at -20°C. When reconstituted in sterile pH 7.4 0.01M PBS or diluent of antibody the antibody is stable for at least two weeks at 2-4 °C.
PubMed:	PubMed
Product Detail:	Crkl is a 34kDa adaptor protein which has been shown to activate the RAS and JUN kinase signalling pathways and transforms fibroblasts in a RAS dependant manner. Crkl is a substitute of BCR ABL tyrosine kinase. In addition, Crkl has oncogenic potential.

Function:

May mediate the transduction of intracellular signals.

Subunit:

Interacts with INPP5D/SHIP1. Interacts with DOCK2 and EPOR. Interacts with phosphorylated CBLB and IRS4.

Similarity:

Belongs to the CRK family.

Contains 1 SH2 domain.

Contains 2 SH3 domains.

SWISS:

P46109

Gene ID:

1399

Database links:

[Entrez Gene: 1399](#)Human

[Entrez Gene: 12929](#)Mouse

[Oimim: 602007](#)Human

[SwissProt: P46109](#)Human

[SwissProt: P47941](#)Mouse

[Unigene: 5613](#)Human

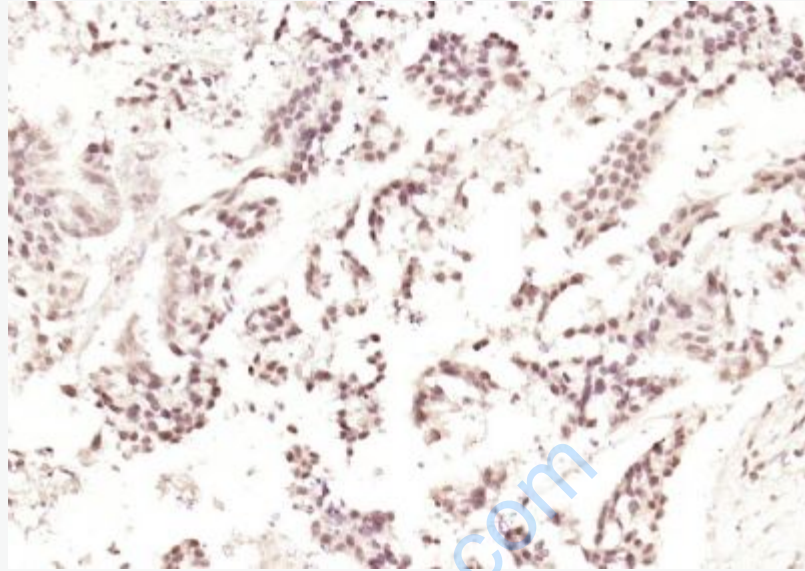
[Unigene: 21048](#)Mouse

[Unigene: 451241](#)Mouse

Important Note:

This product as supplied is intended for research use only, not for use in human, therapeutic or diagnostic applications.

接头蛋白CrkL是Crk家族成员之一, CRKL为具有SH2及SH3结构的连接蛋白, CrkL参与多种Signal transduction途径调节细胞运动、增殖及分化,在各种组织中广泛表达,在多种信号途径中起重要作用。



Picture:

Paraformaldehyde-fixed, paraffin embedded (human gastric carcinoma); Antigen retrieval by boiling in sodium citrate buffer (pH6.0) for 15min; Block endogenous peroxidase by 3% hydrogen peroxide for 20 minutes; Blocking buffer (normal goat serum) at 37°C for 30min; Antibody incubation with (phospho-Crk1 (Tyr251)) Polyclonal Antibody, Unconjugated (SL3738R) at 1:200 overnight at 4°C, followed by operating according to SP Kit(Rabbit) (sp-0023) instructions and DAB staining.