



Rabbit Anti-Serum Amyloid P antibody

SL3765R

Product Name:	Serum Amyloid P
Chinese Name:	血清淀粉样蛋白P成份抗体
Alias:	SAMP; 9.5S alpha 1 glycoprotein; 9.5S alpha 1 glycoprotein; 9.5S alpha-1-glycoprotein; Amyloid P component serum; APCS; MGC88159; Pentaxin related; PTX 2; PTX2; SAMP_HUMAN; SAP; Serum amyloid P component; Serum amyloid P-component(1-203); Serum amyloid P.
Organism Species:	Rabbit
Clonality:	Polyclonal
React Species:	Human,Mouse,Rat,Pig,
Applications:	WB=1:500-2000ELISA=1:500-1000IHC-P=1:400-800IHC-F=1:400-800IF=1:100-500 (Paraffin sections need antigen repair) not yet tested in other applications. optimal dilutions/concentrations should be determined by the end user.
Molecular weight:	25-28kDa
Cellular localization:	Secretory protein
Form:	Lyophilized or Liquid
Concentration:	1mg/ml
immunogen:	KLH conjugated synthetic peptide derived from human Serum amyloid P component:31-130/223
Lsotype:	IgG
Purification:	affinity purified by Protein A
Storage Buffer:	0.01M TBS(pH7.4) with 1% BSA, 0.03% Proclin300 and 50% Glycerol.
Storage:	Store at -20 °C for one year. Avoid repeated freeze/thaw cycles. The lyophilized antibody is stable at room temperature for at least one month and for greater than a year when kept at -20°C. When reconstituted in sterile pH 7.4 0.01M PBS or diluent of antibody the antibody is stable for at least two weeks at 2-4 °C.
PubMed:	PubMed
Product Detail:	The protein encoded by this gene is a glycoprotein, belonging to the pentraxin family of proteins, which has a characteristic pentameric organization. These family members have considerable sequence homology which is thought to be the result of gene

duplication. The binding of the encoded protein to proteins in the pathological amyloid cross-beta fold suggests its possible role as a chaperone. This protein is also thought to control the degradation of chromatin. It has been demonstrated that this protein binds to apoptotic cells at an early stage, which raises the possibility that it is involved in dealing with apoptotic cells in vivo. [provided by RefSeq, Sep 2008].

Subunit:

Homopentamer. Pentaxin (or pentraxin) have a discoid arrangement of 5 non-covalently bound subunits.

Subcellular Location:

Secreted.

Tissue Specificity:

Found in serum and urine.

DISEASE:

Note=SAP is a precursor of amyloid component P which is found in basement membrane and associated with amyloid deposits.

SWISS:

P02743

Gene ID:

325

Database links:

[Entrez Gene: 325](#)Human

[Omin: 104770](#)Human

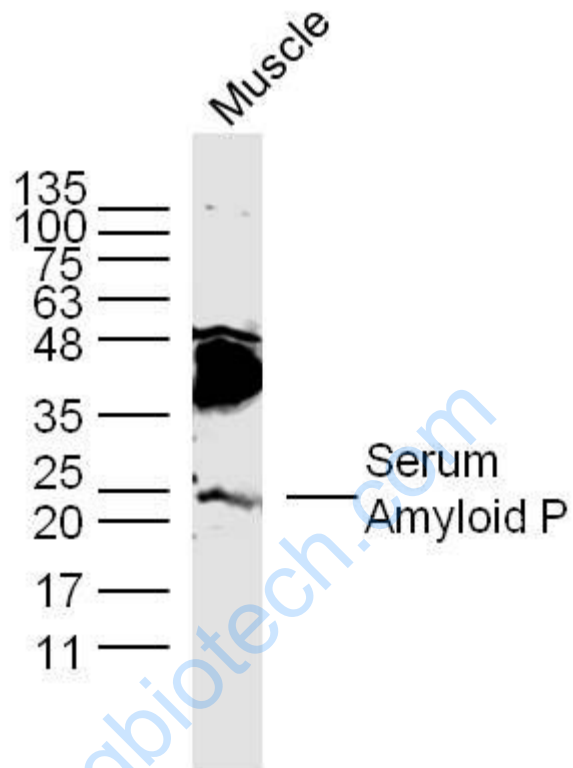
[SwissProt: P02743](#)Human

[Unigene: 507080](#)Human

Important Note:

This product as supplied is intended for research use only, not for use in human, therapeutic or diagnostic applications.

Picture:



Sample:

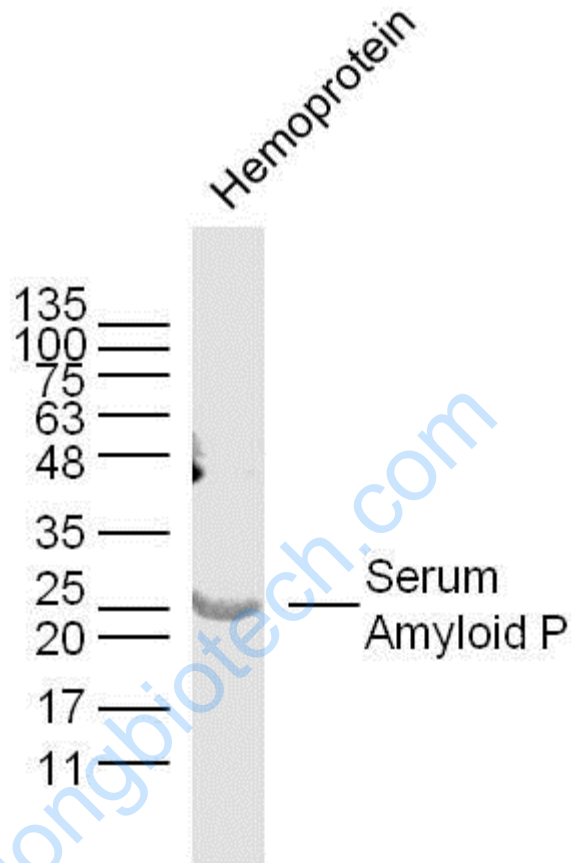
Muscle (Mouse) Lysate at 40 ug

Primary: Anti-Serum Amyloid P (SL3765R) at 1/300 dilution

Secondary: IRDye800CW Goat Anti-Rabbit IgG at 1/20000 dilution

Predicted band size: 25/28 kD

Observed band size: 25 kD



Sample:

Hemoprotein (Mouse) Lysate at 40 ug

Primary: Anti-Serum Amyloid P (SL3765R) at 1/300 dilution

Secondary: IRDye800CW Goat Anti-Rabbit IgG at 1/20000 dilution

Predicted band size: 25/28 kD

Observed band size: 25 kD