



Rabbit Anti-ANO1/TMEM16A antibody

SL3794R

Product Name:	ANO1/TMEM16A
Chinese Name:	Transmembrane protein16A/钙激活氯离子通道抗体
Alias:	ANO 1;ANO1_HUMAN; Anoctamin 1; Anoctamin 1 calcium activated chloride channel; Anoctamin-1; Anoctamin1; Discovered on gastrointestinal stromal tumors protein 1; DOG 1; FLJ10261; Membrane protein; Oral cancer overexpressed 2; Oral cancer overexpressed protein 2; ORAOV 2; ORAOV2; TAOS 2; TAOS2; TMEM 16A; TMEM16A; Transmembrane protein 16A (eight membrane spanning domains); Transmembrane protein 16A; Tumor amplified and overexpressed sequence 2; Tumor-amplified and overexpressed sequence 2.
Organism Species:	Rabbit
Clonality:	Polyclonal
React Species:	Human,Mouse,Rat,Dog,Pig,Cow,Horse,
Applications:	ELISA=1:500-1000IHC-P=1:400-800IHC-F=1:400-800IF=1:100-500 (Paraffin sections need antigen repair) not yet tested in other applications. optimal dilutions/concentrations should be determined by the end user.
Molecular weight:	114kDa
Cellular localization:	cytoplasmicThe cell membrane
Form:	Lyophilized or Liquid
Concentration:	1mg/ml
immunogen:	KLH conjugated synthetic peptide derived from human DOG-1/TMEM16A:151-250/986
Lsotype:	IgG
Purification:	affinity purified by Protein A
Storage Buffer:	0.01M TBS(pH7.4) with 1% BSA, 0.03% Proclin300 and 50% Glycerol.
Storage:	Store at -20 °C for one year. Avoid repeated freeze/thaw cycles. The lyophilized antibody is stable at room temperature for at least one month and for greater than a year when kept at -20°C. When reconstituted in sterile pH 7.4 0.01M PBS or diluent of antibody the antibody is stable for at least two weeks at 2-4 °C.
PubMed:	PubMed

TMEM16A (Transmembrane protein 16A) is an eight-transmembrane protein homologous to C12orf3, C11orf25 and FLJ34272 gene products and is amplified in various cancers. It acts as a calcium-activated chloride channel and is required for normal tracheal development.

Function:

Acts as a calcium-activated chloride channel. Required for normal tracheal development (By similarity).

Subcellular Location:

Cell membrane; Multi-pass membrane protein. Cytoplasm.

Tissue Specificity:

Broadly expressed with higher levels in liver and skeletal muscle.

Similarity:

Belongs to the anoctamin family.

SWISS:

Q5XXA6

Gene ID:

55107

Database links:

[Entrez Gene: 55107](#) Human

[Entrez Gene: 101772](#) Mouse

[Entrez Gene: 309135](#) Rat

[Omim: 610108](#) Human

[SwissProt: Q5XXA6](#) Human

[SwissProt: Q8BHY3](#) Mouse

[Unigene: 503074](#) Human

[Unigene: 26700](#) Mouse

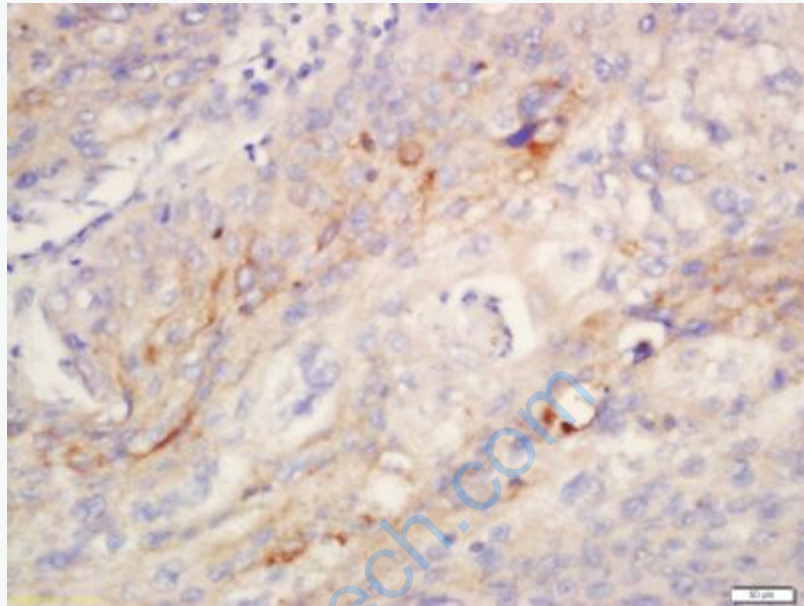
[Unigene: 162509](#) Rat

Important Note:

This product as supplied is intended for research use only, not for use in human,

Product Detail:

therapeutic or diagnostic applications.

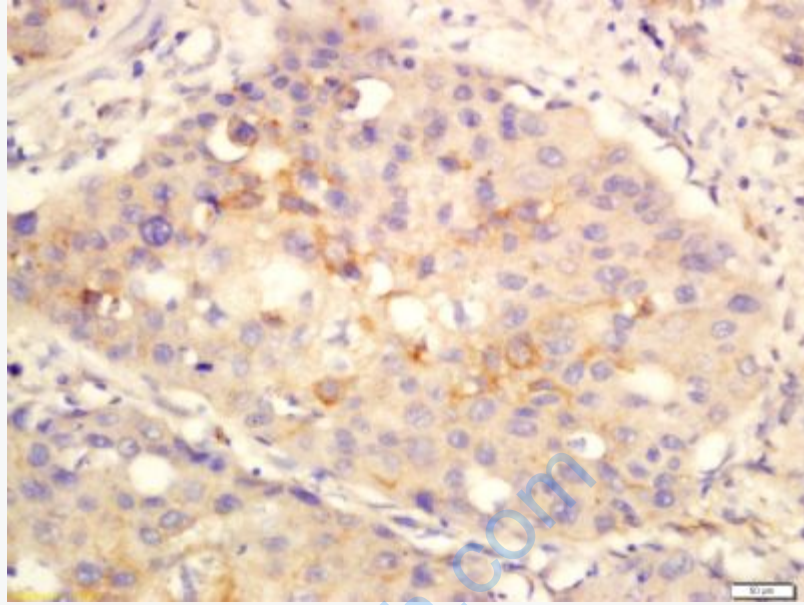


Picture:

Tissue/cell: human lung carcinoma; 4% Paraformaldehyde-fixed and paraffin-embedded;

Antigen retrieval: citrate buffer (0.01M, pH 6.0), Boiling bathing for 15min; Block endogenous peroxidase by 3% Hydrogen peroxide for 30min; Blocking buffer (normal goat serum,C-0005) at 37°C for 20 min;

Incubation: Anti-TMEM16A Polyclonal Antibody, Unconjugated(SL3794R) 1:200, overnight at 4°C, followed by conjugation to the secondary antibody(SP-0023) and DAB(C-0010) staining



Tissue/cell: Human lung cancer tissue; 4% Paraformaldehyde-fixed and paraffin-embedded;

Antigen retrieval: citrate buffer (0.01M, pH 6.0), Boiling bathing for 15min; Block endogenous peroxidase by 3% Hydrogen peroxide for 30min; Blocking buffer (normal goat serum,C-0005) at 37°C for 20 min;

Incubation: Anti-TMEM16A Polyclonal Antibody, Unconjugated(SL3794R) 1:200, overnight at 4°C, followed by conjugation to the secondary antibody(SP-0023) and DAB(C-0010) staining