



Rabbit Anti-GCDGP15 antibody

SL3795R

Product Name:	GCDGP15
Chinese Name:	囊性组织液体蛋白15抗体
Alias:	GCDGP15; GCDGP 15; GCDGP-15; Gp17; GPIP4; Gross cystic disease fluid protein 15; Prolactin induced protein; Prolactin inducible protein precursor; SABP; Secretory actin binding protein.PIP_HUMAN
Organism Species:	Rabbit
Clonality:	Polyclonal
React Species:	Human,Mouse,Rat,
Applications:	ELISA=1:500-1000IHC-P=1:400-800IHC-F=1:400-800IF=1:100-500 (Paraffin sections need antigen repair) not yet tested in other applications. optimal dilutions/concentrations should be determined by the end user.
Molecular weight:	13.5kDa
Cellular localization:	Secretory protein
Form:	Lyophilized or Liquid
Concentration:	1mg/ml
immunogen:	KLH conjugated synthetic peptide derived from human GCDGP15/SABP:51-146/146
Lsotype:	IgG
Purification:	affinity purified by Protein A
Storage Buffer:	0.01M TBS(pH7.4) with 1% BSA, 0.03% Proclin300 and 50% Glycerol.
Storage:	Store at -20 °C for one year. Avoid repeated freeze/thaw cycles. The lyophilized antibody is stable at room temperature for at least one month and for greater than a year when kept at -20°C. When reconstituted in sterile pH 7.4 0.01M PBS or diluent of antibody the antibody is stable for at least two weeks at 2-4 °C.
PubMed:	PubMed
Product Detail:	Gross cystic disease is a common premenopausal disorder in which gross cysts are the predominant pathologic lesion. It is characterized by production of a fluid secretion which accumulates in the breast cysts. Gross cystic disease fluid is a pathologic secretion from breast composed of several glycoproteins, including a unique 15 kDa monomer protein, GCDFP 15. The cells within the body that produce GCDFP 15 appear to be

restricted primarily to those with apocrine function. Studies have found GCDFP 15 to be a highly specific and sensitive marker for breast cancer.

Subunit:

Monomer. Interacts with AZGP1.

Subcellular Location:

Secreted.

Tissue Specificity:

Expressed in pathological conditions of the mammary gland and in several exocrine tissues, such as the lacrimal, salivary, and sweat glands.

Similarity:

Belongs to the PIP family.

SWISS:

P12273

Gene ID:

5304

Database links:

[Entrez Gene: 5304](#)Human

[Omid: 176720](#)Human

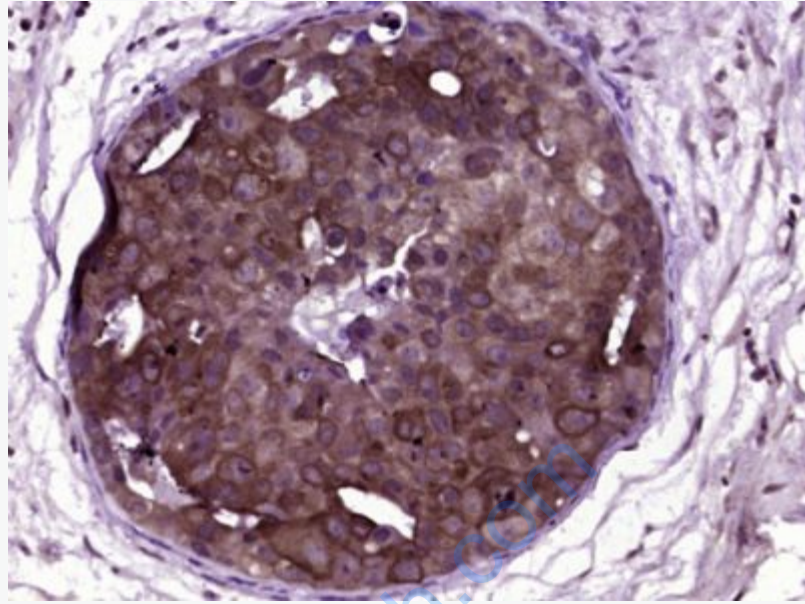
[SwissProt: P12273](#)Human

[Unigene: 99949](#)Human

Important Note:

This product as supplied is intended for research use only, not for use in human, therapeutic or diagnostic applications.

GCDFP15是一种15kDa的单链蛋白, 常见于组织囊性病变的囊泡液中。GCDFP-15是一种高度特异和敏感的乳腺癌标志, 可用于乳腺癌的鉴别诊断, 与CK7和CK20联合使用, 可以用于鉴别原发或继发乳腺外派杰氏病。



Picture:

Paraformaldehyde-fixed, paraffin embedded (Human breast carcinoma); Antigen retrieval by boiling in sodium citrate buffer (pH6.0) for 15min; Block endogenous peroxidase by 3% hydrogen peroxide for 20 minutes; Blocking buffer (normal goat serum) at 37°C for 30min; Antibody incubation with (GCDGP15) Polyclonal Antibody, Unconjugated (SL3795R) at 1:400 overnight at 4°C, followed by operating according to SP Kit(Rabbit) (sp-0023) instructions and DAB staining.