



Rabbit Anti-Radixin antibody

SL3808R

Product Name:	Radixin
Chinese Name:	根蛋白抗体
Alias:	ESP10; Hh-induced MATH and BTB domain-containing protein; HIB; Moesin-B; Protein roadkill; Radixin; rdx; CB567; CG12537; DFNB24; RADI HUMAN.
Organism Species:	Rabbit
Clonality:	Polyclonal
React Species:	Human,Mouse,Rat,Chicken,Dog,Pig,Cow,Horse,Rabbit,Sheep,
Applications:	ELISA=1:500-1000IHC-P=1:400-800IHC-F=1:400-800IF=1:100-500 (Paraffin sections need antigen repair) not yet tested in other applications. optimal dilutions/concentrations should be determined by the end user.
Molecular weight:	69kDa
Cellular localization:	cytoplasmicThe cell membrane
Form:	Lyophilized or Liquid
Concentration:	1mg/ml
immunogen:	KLH conjugated synthetic peptide derived from human Radixin:25-130/583
Isotype:	IgG
Purification:	affinity purified by Protein A
Storage Buffer:	0.01M TBS(pH7.4) with 1% BSA, 0.03% Proclin300 and 50% Glycerol.
Storage:	Store at -20 °C for one year. Avoid repeated freeze/thaw cycles. The lyophilized antibody is stable at room temperature for at least one month and for greater than a year when kept at -20°C. When reconstituted in sterile pH 7.4 0.01M PBS or diluent of antibody the antibody is stable for at least two weeks at 2-4 °C.
PubMed:	PubMed
Product Detail:	Radixin is a cytoskeletal protein that may be important in linking actin to the plasma membrane. It is highly similar in sequence to both ezrin and moesin. The radixin gene has been localized by fluorescence in situ hybridization to 11q23. A truncated version representing a pseudogene (RDXP2) was assigned to Xp21.3. Another pseudogene that seemed to lack introns (RDXP1) was mapped to 11p by Southern and PCR analyses. Multiple alternatively spliced transcript variants encoding different isoforms have been

found for this gene.

Function:

Radixin is a cytoskeletal protein that may be important in linking actin to the plasma membrane.

Subunit:

Binds SLC9A3R1. Interacts with NHERF1, NHERF2, LAYN, MME/NEP and ICAM2

Subcellular Location:

Cell membrane; Peripheral membrane protein; Cytoplasmic side. Cytoplasm, cytoskeleton. Cleavage furrow. Note=Highly concentrated in the undercoat of the cell-to-cell adherens junction and the cleavage furrow in the interphase and mitotic phase, respectively.

Post-translational modifications:

Phosphorylated by tyrosine-protein kinases. Phosphorylation by ROCK2 suppresses the head-to-tail association of the N-terminal and C-terminal halves resulting in an opened conformation which is capable of actin and membrane-binding

DISEASE:

Defects in RDX are the cause of deafness autosomal recessive type 24 (DFNB24) [MIM:611022]. DFNB24 is a form of sensorineural hearing loss. Sensorineural deafness results from damage to the neural receptors of the inner ear, the nerve pathways to the brain, or the area of the brain that receives sound information.

Similarity:

Contains 1 FERM domain.

SWISS:

P35241

Gene ID:

5962

Database links:

[Entrez Gene: 5962](#)Human

[Entrez Gene: 19684](#)Mouse

[Entrez Gene: 315655](#)Rat

[Oimim: 179410](#)Human

[SwissProt: P35241](#)Human

[SwissProt: P26043](#)Mouse

[Unigene: 263671](#)Human

[Unigene: 592679](#)Human

[Unigene: 245746](#)Mouse

[Unigene: 472057](#)Mouse

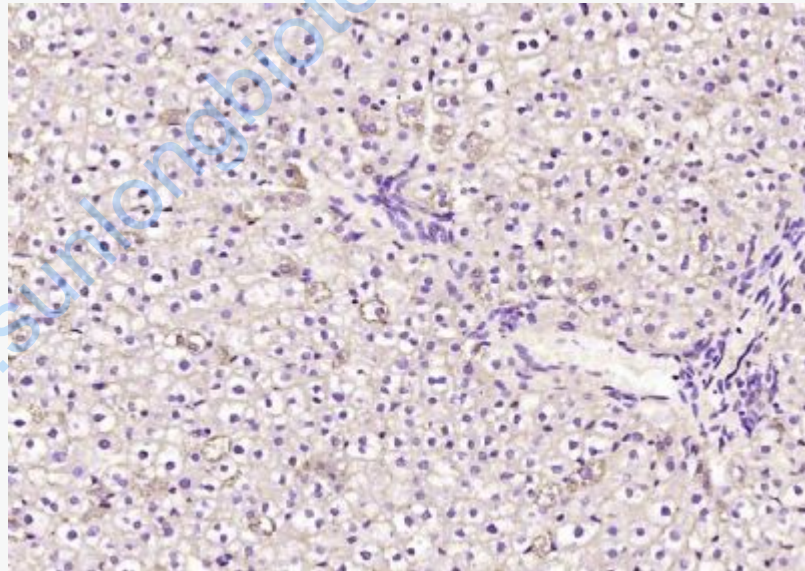
[Unigene: 224619](#)Rat

Important Note:

This product as supplied is intended for research use only, not for use in human, therapeutic or diagnostic applications.

根蛋白是一种Cytoskeleton蛋白, 在连接肌动蛋白于质膜中可能有重要作用。研究表明, 根蛋白对于结合胆红素通过其Mrp2在BCMs中定位支持的分泌是需要的。埃兹蛋白-根蛋白-膜突蛋白家族蛋白是亚膜皮质, 特别是epithelial cells中普遍存在的成分。其可能参与将肌动蛋白丝的顶端锚定于胞膜。

Picture:



Paraformaldehyde-fixed, paraffin embedded (rat liver); Antigen retrieval by boiling in sodium citrate buffer (pH6.0) for 15min; Block endogenous peroxidase by 3% hydrogen peroxide for 20 minutes; Blocking buffer (normal goat serum) at 37°C for 30min; Antibody incubation with (Radixin) Polyclonal Antibody, Unconjugated (SL3808R) at 1:200 overnight at 4°C, followed by operating according to SP

	Kit(Rabbit) (sp-0023) instructionsand DAB staining.
--	---

www.sunlongbiotech.com