



Rabbit Anti-GDF15 antibody

SL3818R

Product Name:	GDF15
Chinese Name:	生长分化因子15/巨嗜细胞抑制因子1抗体
Alias:	GDF 15; GDF-15 Growth differentiation factor 15; Growth/differentiation factor 15; Macrophage inhibitory cytokine 1; MIC 1; MIC-1; MIC1; NAG 1; NAG1; NRG 1; NRG1; NSAID (nonsteroidal anti inflammatory drug) activated protein 1; NSAID; NSAID regulated protein 1; PDF; PLAB; Placental bone morphogenetic protein; Placental bone morphogenic protein; Placental TGF beta; placental transformation growth factor beta; Prostate differentiation factor; PTGF beta; PTGFB; prostate derived factor.
文献引用 PubMed :	<p>Specific References(4) SL3818R has been referenced in 4 publications.</p> <p>[IF=1.42]Ruan, Wei-Min, et al. "Differential expression of glycoprotein non-metastatic melanoma protein B (GPNMB) involved in trichostatin A-induced apoptosis in gastric cancer." International journal of clinical and experimental medicine 7.12 (2014): 4857-4866.IHC-P;Human. PubMed:25663982</p> <p>[IF=4.60]Figueiredo, Jose-Luiz, et al. "Selective Cathepsin S Inhibition Attenuates Atherosclerosis in Apolipoprotein E-Deficient Mice with Chronic Renal Disease." The American Journal of Pathology (2015).IHC-F;Mouse. PubMed:25680278</p> <p>[IF=1.89]Li, Yun-Long, et al. "Downregulation of growth differentiation factor-15 in trichostatin A-induced apoptosis could play a role in progression of gastric cancer." International Journal of Clinical and Experimental Pathology 8.7 (2015): 8136.WB;Human. PubMed:26339382</p>

	<p>[IF=5.29]Ueno, Koji, et al. "Increased plasma VEGF levels following ischemic preconditioning are associated with downregulation of miRNA-762 and miR-3072-5p." Scientific Reports 6 (2016): 36758.WB;Mouse.</p> <p style="text-align: right;">PubMed:27905554</p>
Organism Species:	Rabbit
Clonality:	Polyclonal
React Species:	Human,Mouse,Rat,
Applications:	WB=1:500-2000ELISA=1:500-1000IHC-P=1:400-800IHC-F=1:400-800IF=1:100-500 (Paraffin sections need antigen repair) not yet tested in other applications. optimal dilutions/concentrations should be determined by the end user.
Molecular weight:	12.5/34kDa
Cellular localization:	Secretory protein
Form:	Lyophilized or Liquid
Concentration:	1mg/ml
immunogen:	KLH conjugated synthetic peptide derived from human GDF-15:221-308/308
Lsotype:	IgG
Purification:	affinity purified by Protein A
Storage Buffer:	0.01M TBS(pH7.4) with 1% BSA, 0.03% Proclin300 and 50% Glycerol.
Storage:	Store at -20 °C for one year. Avoid repeated freeze/thaw cycles. The lyophilized antibody is stable at room temperature for at least one month and for greater than a year when kept at -20°C. When reconstituted in sterile pH 7.4 0.01M PBS or diluent of antibody the antibody is stable for at least two weeks at 2-4 °C.
PubMed:	PubMed
Product Detail:	<p>Growth differentiation factor 15 (GDF15) is a member of the bone morphogenetic protein (BMP) family and the TGF-beta superfamily. It has been implicated in a variety of functions directly related to tumorigenicity including antiproliferative and pro-apoptotic effects. BMP proteins are secreted growth factors that are characterized by seven conserved cysteine residues. In general, they are regulators of cell growth and differentiation in both embryonic and adult tissues. GDF15 is an important downstream mediator of DNA damage signaling and a transcriptional target of p53.</p> <p>Subcellular Location: Secreted.</p> <p>Tissue Specificity: Highly expressed in placenta, with lower levels in prostate and colon and some expression in kidney.</p> <p>Similarity: Belongs to the TGF-beta family.</p> <p>SWISS: Q99988</p>

Gene ID:
9518

Database links:

[Entrez Gene: 9518](#)Human

[Entrez Gene: 23886](#)Mouse

[Entrez Gene: 29455](#)Rat

[Omim: 605312](#)Human

[SwissProt: Q99988](#)Human

[SwissProt: Q9Z0J7](#)Mouse

[SwissProt: Q9Z0J6](#)Rat

[Unigene: 616962](#)Human

[Unigene: 31325](#)Mouse

[Unigene: 44228](#)Rat

Important Note:

This product as supplied is intended for research use only, not for use in human, therapeutic or diagnostic applications.

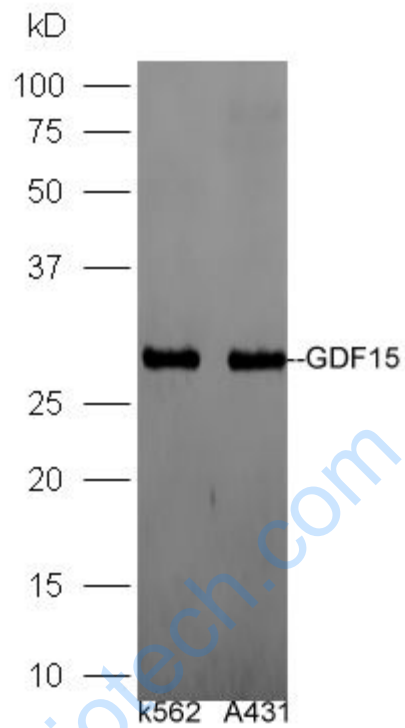
生长分化因子15(GDF15)是骨形态发生蛋白(BMP)和转化生长因子- β 超家族成员。GDF-15又叫巨噬细胞抑制因子(macrophage inhibiting cytokine, MIC)-1、胎盘转化生长因子(placental transformation growth factor, PTGF)- β 、前列腺衍生因子(prostate derived factor, PDF)和胎盘骨形态发生蛋白(placental bone morphogenetic protein, PLAB)。

有学者认为:GDF-

15在Tumour发展的不同阶段发挥着不同的生物学作用;随着Tumour的发生发展, GDF-

15可能表达不同形式的蛋白,在Tumour发生的早期阶段可能发挥抑瘤作用,而在Tumour发展的后期阶段发挥促瘤作用。

Picture:



Sample:

K562 Cell Lysate at 30 ug

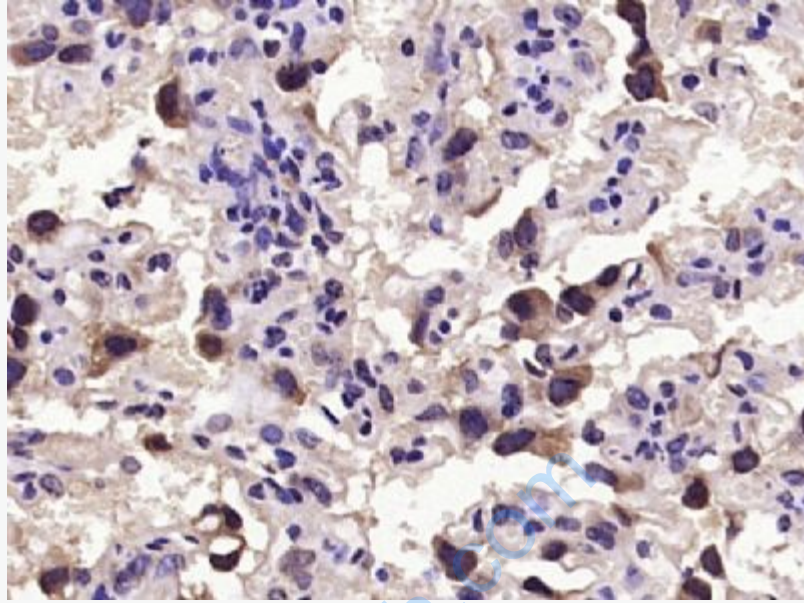
A431 Cell Lysate at 30 ug

Primary: Anti-GDF15 (SL3818R) at 1:300 dilution;

Secondary: HRP conjugated Goat-Anti-rabbit IgG(SL3818R) at 1: 5000 dilution;

Predicted band size:34 kD

Observed band size:30 kD



Paraformaldehyde-fixed, paraffin embedded (Mouse placenta); Antigen retrieval by microwave in sodium citrate buffer (pH6.0) ; Block endogenous peroxidase by 3% hydrogen peroxide for 30 minutes; Blocking buffer (3% BSA) at RT for 30min; Antibody incubation with (GDF15) Polyclonal Antibody, Unconjugated (SL3818R) at 1:400 overnight at 4°C, followed by conjugation to the secondary antibody (labeled with HRP) and DAB staining.