



Rabbit Anti-Cyclin G2 antibody

SL3822R

Product Name:	Cyclin G2
Chinese Name:	周期素G2抗体
Alias:	CCNG 2; CCNG2; CCNG-2; CCNG2 protein; Cyclin G2; Cyclin-G2; CyclinG2.
文献引用 PubMed :	Specific References(1) SL3822R has been referenced in 1 publications. [IF=4.20]Yuan, Qing, et al. "Docetaxel-loaded solid lipid nanoparticles suppress breast cancer cells growth with reduced myelosuppression toxicity." International Journal of Nanomedicine 9 (2014): 4829. WB;Mouse. PubMed:25378924
Organism Species:	Rabbit
Clonality:	Polyclonal
React Species:	Human,Mouse,Rat,Dog,Pig,Cow,Horse,
Applications:	WB=1:500-2000ELISA=1:500-1000IHC-P=1:400-800IHC-F=1:400-800ICC=1:100-500IF=1:100-500 (Paraffin sections need antigen repair) not yet tested in other applications. optimal dilutions/concentrations should be determined by the end user.
Molecular weight:	38kDa
Cellular localization:	cytoplasmic
Form:	Lyophilized or Liquid
Concentration:	1mg/ml
immunogen:	KLH conjugated synthetic peptide derived from human Cyclin G2:151-250/344
Lsotype:	IgG
Purification:	affinity purified by Protein A
Storage Buffer:	0.01M TBS(pH7.4) with 1% BSA, 0.03% Proclin300 and 50% Glycerol.
Storage:	Store at -20 °C for one year. Avoid repeated freeze/thaw cycles. The lyophilized antibody is stable at room temperature for at least one month and for greater than a year when kept at -20°C. When reconstituted in sterile pH 7.4 0.01M PBS or diluent of antibody the antibody is stable for at least two weeks at 2-4 °C.

PubMed:[PubMed](#)

Cyclin G2 may play a role in growth regulation and in negative regulation of cell cycle progression. Cyclin G2 expression levels increase through the cell cycle to peak in the mid/late-S phase and decrease during G2/M phase. It may also contribute in maintaining the quiescent state of differentiated cells. Cyclin G2 is similar to cyclin A in the cyclin box, although no kinase activity is detected.

Function:

May play a role in growth regulation and in negative regulation of cell cycle progression.

Subcellular Location:

Cytoplasm.

Tissue Specificity:

High levels in cerebellum, thymus, spleen and prostate. Low levels in skeletal muscle.

Similarity:

Belongs to the cyclin family. Cyclin G subfamily.

SWISS:

Q16589

Product Detail:**Gene ID:**

901

Database links:

[Clone ID: BC032518](#)Human

[Entrez Gene: 901](#)Human

[Entrez Gene: 12452](#)Mouse

[Entrez Gene: 29157](#)Rat

[Omim: 603203](#)Human

[SwissProt: Q16589](#)Human

[SwissProt: O08918](#)Mouse

[Unigene: 724499](#)Human

[Unigene: 3527](#)Mouse

Important Note:

This product as supplied is intended for research use only, not for use in human,

therapeutic or diagnostic applications.

Picture:



Sample: Brain(Rat) lysate at 30ug;

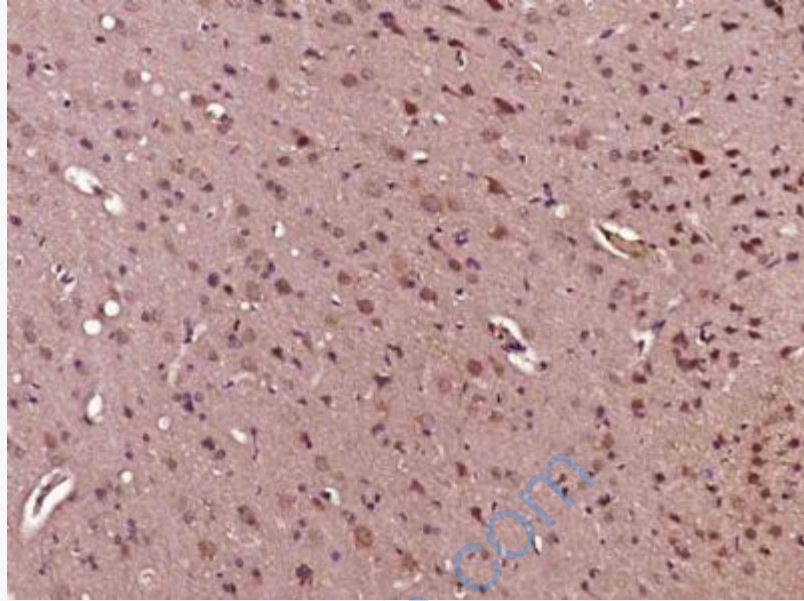
Primary: Anti-Cyclin G2 (SL3822R) at 1:200 dilution;

Secondary: HRP conjugated Goat Anti-Rabbit IgG(SL3822R) at 1: 3000 dilution;

Predicted band size : 38kD

Observed band size : 38kD

May be formed of homo-dimer



Paraformaldehyde-fixed, paraffin embedded (Rat brain); Antigen retrieval by boiling in sodium citrate buffer (pH6.0) for 15min; Block endogenous peroxidase by 3% hydrogen peroxide for 20 minutes; Blocking buffer (normal goat serum) at 37°C for 30min; Antibody incubation with (Cyclin G2) Polyclonal Antibody, Unconjugated (SL3822R) at 1:400 overnight at 4°C, followed by operating according to SP Kit(Rabbit) (sp-0023) instructions and DAB staining.