



Rabbit Anti-LDHC antibody

SL3827R

Product Name:	LDHC
Chinese Name:	乳酸脱氢酶LDH-C/Tumour/睾丸抗原32抗体
Alias:	L-lactate dehydrogenase C chain; Lactate Dehydrogenase C; LDH-C; Cancer/testis antigen 32; CT32; LDH testis subunit; LDH-X; LDHC; LDH3; LDHX; Variant; LDHC_HUMAN; Cancer,testis antigen 32.
Organism Species:	Rabbit
Clonality:	Polyclonal
React Species:	Human,Mouse,Rat,Dog,Cow,Horse,Rabbit,
Applications:	WB=1:500-2000ELISA=1:500-1000IHC-P=1:400-800IHC-F=1:400-800IF=1:100-500 (Paraffin sections need antigen repair) not yet tested in other applications. optimal dilutions/concentrations should be determined by the end user.
Molecular weight:	36kDa
Cellular localization:	cytoplasmic
Form:	Lyophilized or Liquid
Concentration:	1mg/ml
immunogen:	KLH conjugated synthetic peptide derived from human LDHC:231-332/332
Lsotype:	IgG
Purification:	affinity purified by Protein A
Storage Buffer:	0.01M TBS(pH7.4) with 1% BSA, 0.03% Proclin300 and 50% Glycerol.
Storage:	Store at -20 °C for one year. Avoid repeated freeze/thaw cycles. The lyophilized antibody is stable at room temperature for at least one month and for greater than a year when kept at -20°C. When reconstituted in sterile pH 7.4 0.01M PBS or diluent of antibody the antibody is stable for at least two weeks at 2-4 °C.
PubMed:	PubMed
Product Detail:	Lactate dehydrogenase C catalyzes the conversion of L-lactate and NAD to pyruvate and NADH in the final step of anaerobic glycolysis. LDHC is testis-specific and belongs to the lactate dehydrogenase family. Two transcript variants have been detected which differ in the 5' untranslated region. [provided by RefSeq, Jul 2008].

Function:

Possible role in sperm motility.

Subunit:

Homotetramer.

Subcellular Location:

Cytoplasm.

Similarity:

Belongs to the LDH/MDH superfamily. LDH family.

SWISS:

P07864

Gene ID:

3948

Database links:

[Entrez Gene: 3948](#)Human

[Entrez Gene: 16833](#)Mouse

[Omim: 150150](#)Human

[SwissProt: P07864](#)Human

[SwissProt: P00342](#)Mouse

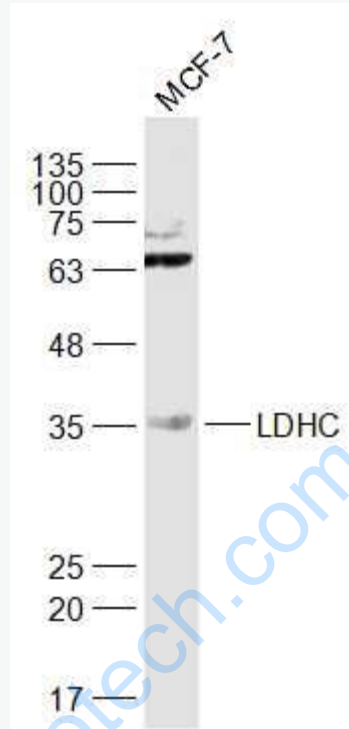
[Unigene: 654377](#)Human

[Unigene: 16563](#)Mouse

Important Note:

This product as supplied is intended for research use only, not for use in human, therapeutic or diagnostic applications.

Picture:



Sample:

MCF-7(Human) Cell Lysate at 30 ug

Primary: Anti-LDHC (SL3827R) at 1/1000 dilution

Secondary: IRDye800CW Goat Anti-Rabbit IgG at 1/20000 dilution

Predicted band size: 36 kD

Observed band size: 36 kD