



Rabbit Anti-Amphiregulin antibody

SL3847R

Product Name:	Amphiregulin
Chinese Name:	双调蛋白/结肠直肠细胞源性生长因子抗体
Alias:	AR; Colorectum cell derived growth factor; CRDGF; A REG; AR antibody; AREG; Colorectum cell derived growth factor; CRDGF; MGC13647; Schwannoma derived growth factor; SDGF; AREG HUMAN.
Organism Species:	Rabbit
Clonality:	Polyclonal
React Species:	Human,Mouse,Rat,Dog,Cow,Horse,Rabbit,Sheep,
Applications:	WB=1:500-2000ELISA=1:500-1000IHC-P=1:400-800IHC-F=1:400-800Flow-Cyt=1:ug/testIF=1:100-500 (Paraffin sections need antigen repair) not yet tested in other applications. optimal dilutions/concentrations should be determined by the end user.
Molecular weight:	16kDa
Cellular localization:	The cell membrane
Form:	Lyophilized or Liquid
Concentration:	1mg/ml
immunogen:	KLH conjugated synthetic peptide derived from human Amphiregulin:185-252/252
Lsotype:	IgG
Purification:	affinity purified by Protein A
Storage Buffer:	0.01M TBS(pH7.4) with 1% BSA, 0.03% Proclin300 and 50% Glycerol.
Storage:	Store at -20 °C for one year. Avoid repeated freeze/thaw cycles. The lyophilized antibody is stable at room temperature for at least one month and for greater than a year when kept at -20°C. When reconstituted in sterile pH 7.4 0.01M PBS or diluent of antibody the antibody is stable for at least two weeks at 2-4 °C.
PubMed:	PubMed
Product Detail:	Amphiregulin expression is induced by phorbol ester, estrogen, androgen, and other EGFR ligands. In vitro, amphiregulin functions as an autocrine growth stimulator to drive proliferation of colon carcinoma cells, normal and oncogene-transformed mammary epithelial cells, cervical carcinoma cells, prostate cancer cells, and keratinocytes. Amphiregulin is important in the development of human placenta and

murine mammary gland. It is reportedly overexpressed in human cancers of breast, colon, stomach and pancreas.

Function:

Ligand of the EGF receptor/EGFR. Autocrine growth factor as well as a mitogen for a broad range of target cells including astrocytes, Schwann cells and fibroblasts.

Subunit:

The immature precursor interacts with CNIH.

Subcellular Location:

Membrane; Single-pass membrane protein.

Similarity:

Belongs to the amphiregulin family.
Contains 1 EGF-like domain.

SWISS:

P15514

Gene ID:

374

Database links:

[Entrez Gene: 374](#)Human

[Entrez Gene: 727738](#)Human

[Entrez Gene: 11839](#)Mouse

[Omim: 104640](#)Human

[SwissProt: P15514](#)Human

[SwissProt: P31955](#)Mouse

[Unigene: 270833](#)Human

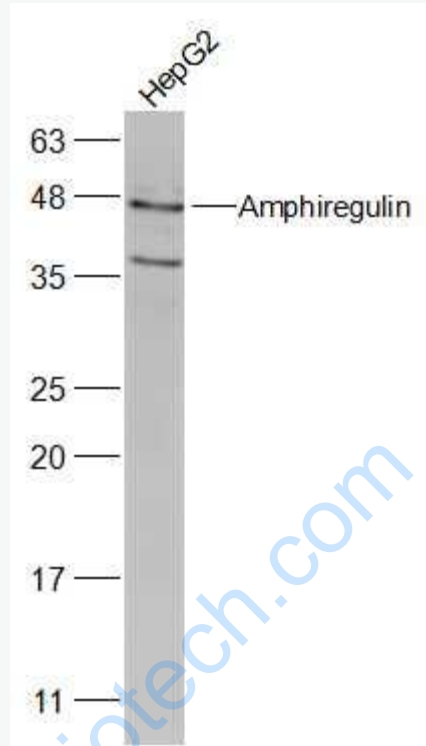
[Unigene: 645475](#)Human

[Unigene: 8039](#)Mouse

Important Note:

This product as supplied is intended for research use only, not for use in human, therapeutic or diagnostic applications.

Picture:



Sample:

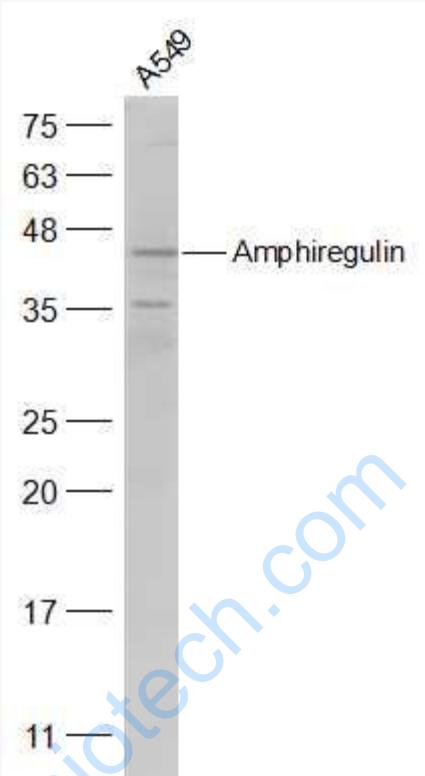
HepG2(Human) Cell Lysate at 30 ug

Primary: Anti-Amphyregulin (SL3847R) at 1/2000 dilution

Secondary: IRDye800CW Goat Anti-Rabbit IgG at 1/20000 dilution

Predicted band size: 26 kD

Observed band size: 41 kD



Sample:

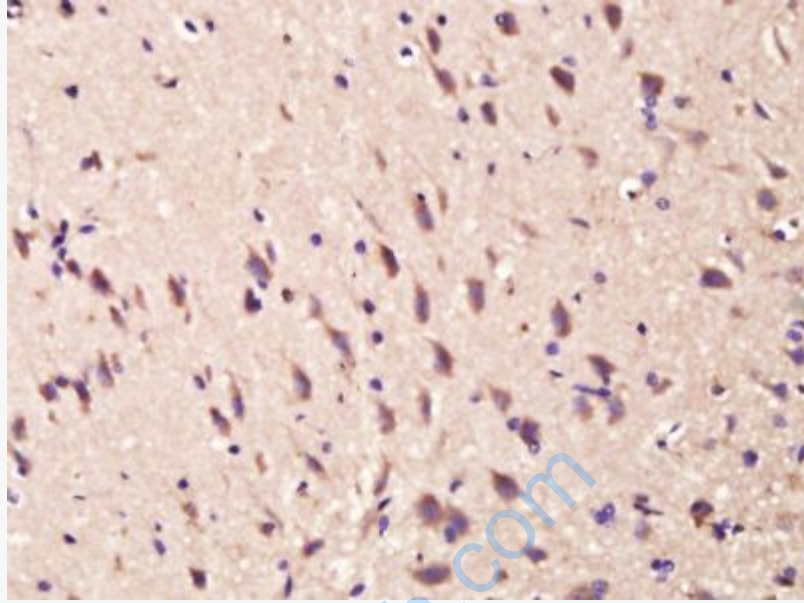
A549(Human) Cell Lysate at 30 ug

Primary: Anti-Amphiregulin (SL3847R) at 1/500 dilution

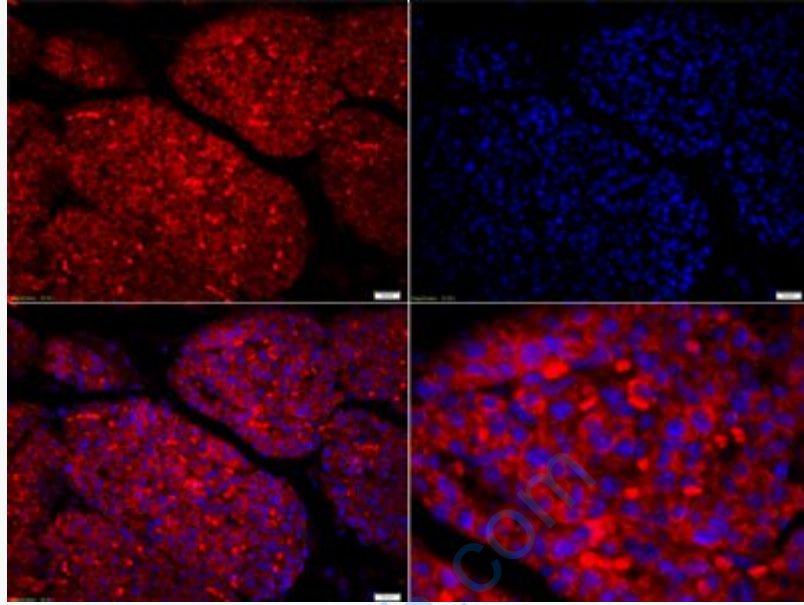
Secondary: IRDye800CW Goat Anti-Rabbit IgG at 1/20000 dilution

Predicted band size: 26 kD

Observed band size: 41 kD



Paraformaldehyde-fixed, paraffin embedded (Rat brain); Antigen retrieval by boiling in sodium citrate buffer (pH6.0) for 15min; Block endogenous peroxidase by 3% hydrogen peroxide for 20 minutes; Blocking buffer (normal goat serum) at 37°C for 30min; Antibody incubation with (Amphiregulin) Polyclonal Antibody, Unconjugated (SL3847R) at 1:400 overnight at 4°C, followed by operating according to SP Kit(Rabbit) (sp-0023) instructions and DAB staining.



Tissue/cell: mouse embryo tissue;4% Paraformaldehyde-fixed and paraffin-embedded;

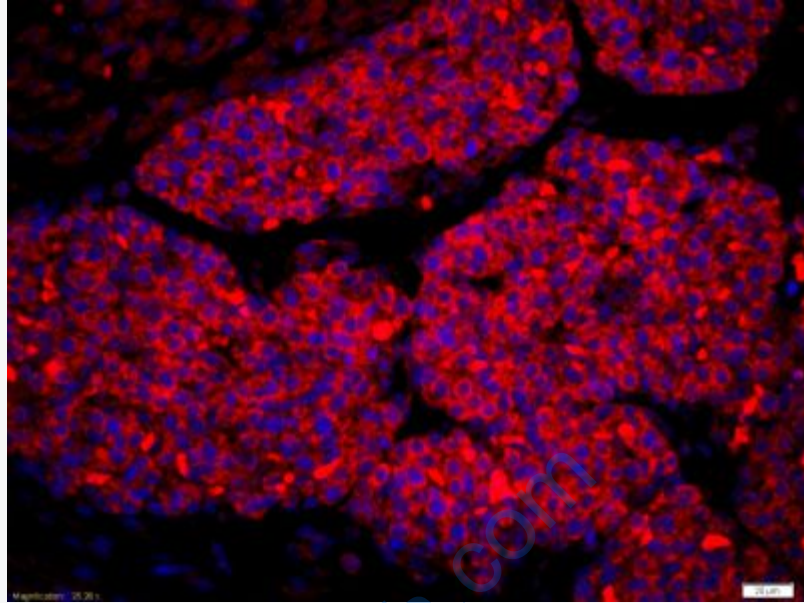
Antigen retrieval: citrate buffer (0.01M, pH 6.0), Boiling bathing for 15min;

Blocking buffer (normal goat serum,C-0005) at 37°C for 20 min;

Incubation: Anti-Amphiregulin Polyclonal Antibody, Unconjugated(SL3847R)

1:200, overnight at 4°C; The secondary antibody was Goat Anti-Rabbit IgG, Cy3 conjugated(SL3847R)used at 1:200 dilution for 40 minutes at 37°C.

DAPI(5ug/ml,blue,C-0033) was used to stain the cell nuclei



Tissue/cell: mouse fetal liver;4% Paraformaldehyde-fixed and paraffin-embedded;

Antigen retrieval: citrate buffer (0.01M, pH 6.0), Boiling bathing for 15min;

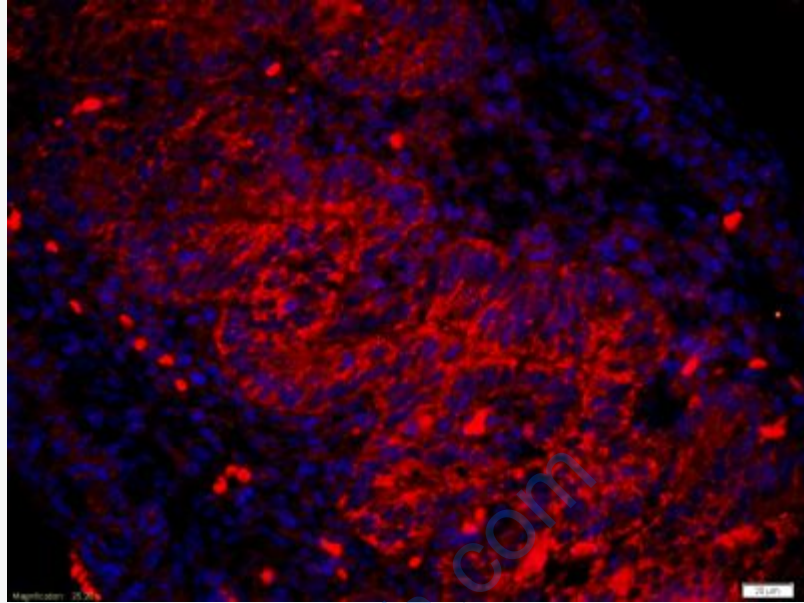
Blocking buffer (normal goat serum,C-0005) at 37°C for 20 min;

Incubation: Anti-Amphiregulin Polyclonal Antibody, Unconjugated(SL3847R)

1:200, overnight at 4°C; The secondary antibody was Goat Anti-Rabbit IgG, Cy3

conjugated(SL3847R)used at 1:200 dilution for 40 minutes at 37°C.

DAPI(5ug/ml,blue,C-0033) was used to stain the cell nuclei



Tissue/cell: mouse fetal intestine;4% Paraformaldehyde-fixed and paraffin-embedded;

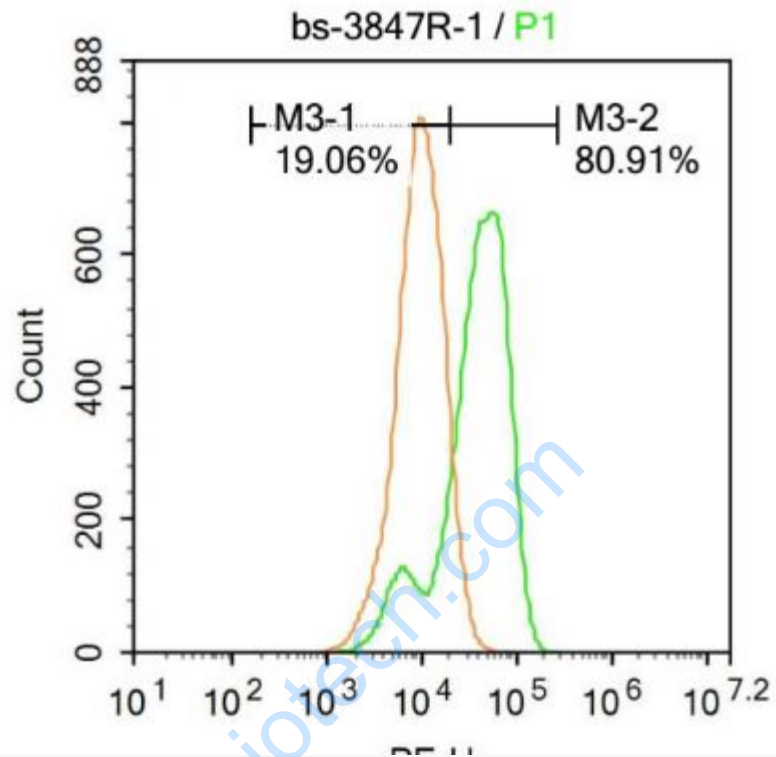
Antigen retrieval: citrate buffer (0.01M, pH 6.0), Boiling bathing for 15min;

Blocking buffer (normal goat serum,C-0005) at 37°C for 20 min;

Incubation: Anti-Amphiregulin Polyclonal Antibody, Unconjugated(SL3847R)

1:200, overnight at 4°C; The secondary antibody was Goat Anti-Rabbit IgG, Cy3 conjugated(SL3847R)used at 1:200 dilution for 40 minutes at 37°C.

DAPI(5ug/ml,blue,C-0033) was used to stain the cell nuclei



Blank control:A549.

Primary Antibody (green line): Rabbit Anti-Amphiregulin antibody (SL3847R)

Dilution: $1\mu\text{g} / 10^6$ cells;

Isotype Control Antibody (orange line): Rabbit IgG .

Secondary Antibody : Goat anti-rabbit IgG-PE

Dilution: $1\mu\text{g} / \text{test}$.

Protocol

The cells were fixed with 4% PFA (10min at room temperature)and then permeabilized with 20% PBST for 20 min at -20°C . The cells were then incubated in 5%BSA to block non-specific protein-protein interactions for 30 min at at room temperature .Cells stained with Primary Antibody for 30 min at room temperature.

The secondary antibody used for 40 min at room temperature. Acquisition of 20,000

	events was performed.
--	-----------------------

www.sunlongbiotech.com