



Rabbit Anti-TMEFF2 antibody

SL3849R

Product Name:	TMEFF2
Chinese Name:	增生性息肉蛋白1抗体
Alias:	Tomoregulin-2; HPP 1; HPP1; Hyperplastic polyposis protein 1; TEFF 2; TEFF2; TENB 2; TENB2; Tomoregulin; TPEF; TR; Transmembrane protein containing epidermal growth factor and follistatin domains ; Transmembrane protein TENB2; Transmembrane protein with EGF like and two follistatin like domains 2; TEFF2 HUMAN.
Organism Species:	Rabbit
Clonality:	Polyclonal
React Species:	Human,Mouse,Rat,Chicken,Dog,Pig,Cow,Horse,Rabbit,Guinea Pig,
Applications:	WB=1:500-2000ELISA=1:500-1000IHC-P=1:400-800IHC-F=1:400-800IF=1:100-500 (Paraffin sections need antigen repair) not yet tested in other applications. optimal dilutions/concentrations should be determined by the end user.
Molecular weight:	37kDa
Cellular localization:	Secretory protein
Form:	Lyophilized or Liquid
Concentration:	1mg/ml
immunogen:	KLH conjugated synthetic peptide derived from human TMEFF2:301-374/374<Cytoplasmic>
Lsotype:	IgG
Purification:	affinity purified by Protein A
Storage Buffer:	0.01M TBS(pH7.4) with 1% BSA, 0.03% Proclin300 and 50% Glycerol.
Storage:	Store at -20 °C for one year. Avoid repeated freeze/thaw cycles. The lyophilized antibody is stable at room temperature for at least one month and for greater than a year when kept at -20°C. When reconstituted in sterile pH 7.4 0.01M PBS or diluent of antibody the antibody is stable for at least two weeks at 2-4 °C.
PubMed:	PubMed
Product Detail:	TMEFF2 is a growth factor implicated in the progression of prostate cancer. It is highly expressed in the brain and may act as a survival factor for mesencephalic and

hippocampal neurons.

Function:

May be a survival factor for hippocampal and mesencephalic neurons. The shedded form up-regulates cancer cell proliferation, probably by promoting ERK1/2 phosphorylation.

Subcellular Location:

Isoform 1: Membrane; Single-pass type I membrane protein (Potential).

Isoform 2: Membrane; Single-pass type I membrane protein (Potential).

Isoform 3: Secreted.

Tissue Specificity:

Highly expressed in adult and fetal brain, spinal cord and prostate. Expressed in all brain regions except the pituitary gland, with highest levels in amygdala and corpus callosum. Expressed in the pericryptal myofibroblasts and other stromal cells of normal colonic mucosa. Expressed in prostate carcinoma. Down-regulated in colorectal cancer. Present in Alzheimer disease plaques (at protein level). Isoform 3 is expressed weakly in testis and at high levels in normal and cancerous prostate.

Post-translational modifications:

N-glycosylated. Contains chondroitin sulfate glycosaminoglycans.

A soluble form (TMEFF2-ECD) is produced by proteolytic shedding. This shedding can be induced by phorbol ester or proinflammatory cytokines such as TNFalpha, and is mediated by ADAM17.

Similarity:

Belongs to the tomoregulin family.

Contains 1 EGF-like domain.

Contains 2 Kazal-like domains.

SWISS:

Q9UIK5

Gene ID:

23671

Database links:

[Entrez Gene: 538354](#)Cow

[Entrez Gene: 23671](#)Human

[Entrez Gene: 56363](#)Mouse

[Omim: 605734](#)Human

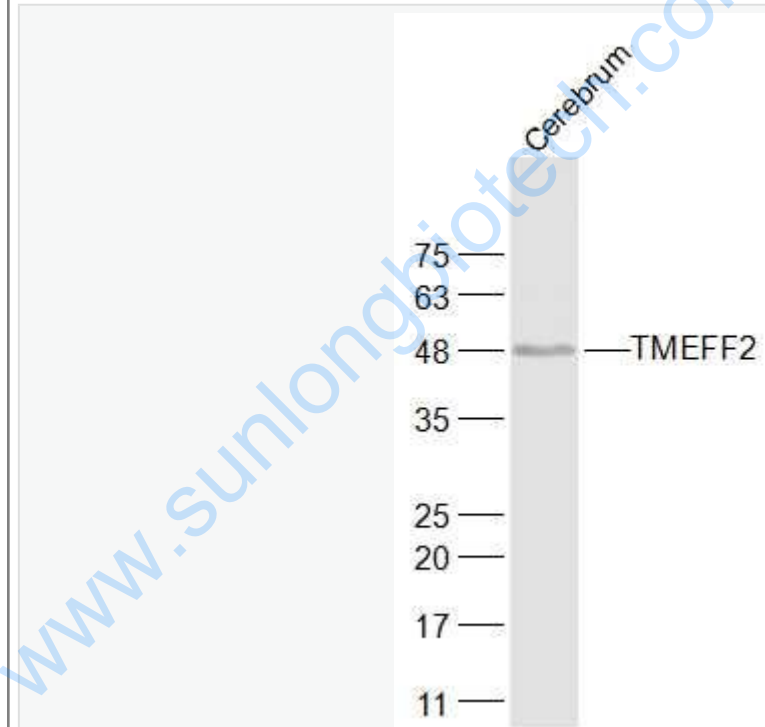
[SwissProt: Q17QD6](#)Cow

[SwissProt: Q9UIK5](#)Human
[SwissProt: Q9QYM9](#)Mouse
[Unigene: 144513](#)Human
[Unigene: 245154](#)Mouse
[Unigene: 445120](#)Mouse

Important Note:

This product as supplied is intended for research use only, not for use in human, therapeutic or diagnostic applications.

Picture:



Sample:

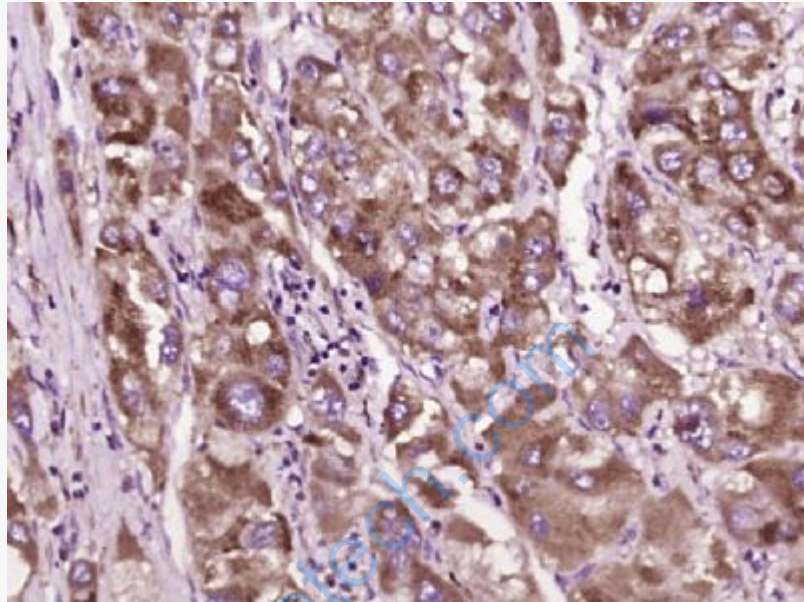
Cerebrum (Rat) Lysate at 40 ug

Primary: Anti-TMEFF2 (SL3849R) at 1/1000 dilution

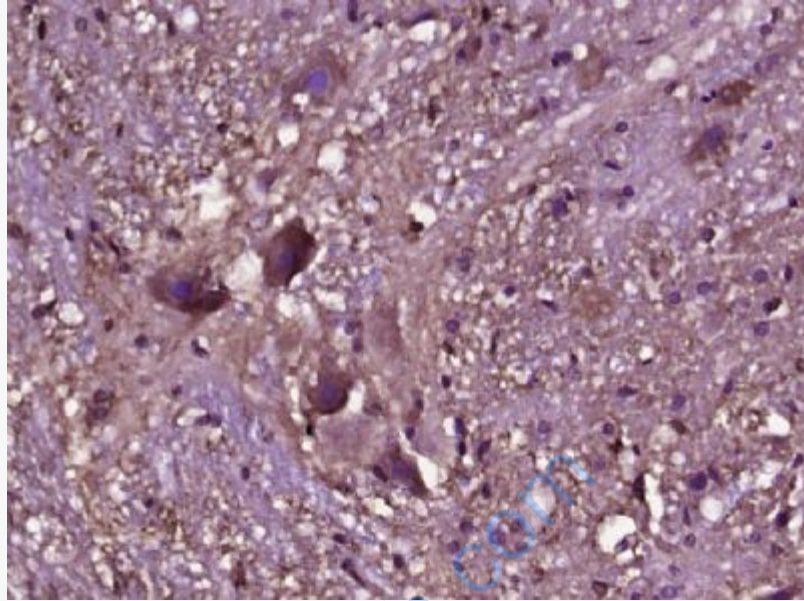
Secondary: IRDye800CW Goat Anti-Rabbit IgG at 1/20000 dilution

Predicted band size: 37 kD

Observed band size: 48 kD



Paraformaldehyde-fixed, paraffin embedded (human liver carcinoma); Antigen retrieval by boiling in sodium citrate buffer (pH6.0) for 15min; Block endogenous peroxidase by 3% hydrogen peroxide for 20 minutes; Blocking buffer (normal goat serum) at 37°C for 30min; Antibody incubation with (TMEFF2) Polyclonal Antibody, Unconjugated (SL3849R) at 1:400 overnight at 4°C, followed by operating according to SP Kit(Rabbit) (sp-0023) instructions and DAB staining.



Paraformaldehyde-fixed, paraffin embedded (rat spinal tissue); Antigen retrieval by boiling in sodium citrate buffer (pH6.0) for 15min; Block endogenous peroxidase by 3% hydrogen peroxide for 20 minutes; Blocking buffer (normal goat serum) at 37°C for 30min; Antibody incubation with (TMEFF2) Polyclonal Antibody, Unconjugated (SL3849R) at 1:400 overnight at 4°C, followed by operating according to SP Kit(Rabbit) (sp-0023) instructions and DAB staining.