



Rabbit Anti-BCMA antibody

SL3850R

Product Name:	BCMA
Chinese Name:	Blymphocyte成熟因子抗体
Alias:	B cell maturation antigen; B Cell Maturation Factor; B cell maturation protein; BCM; BCMA; CD269; CD269 antigen; TNFRSF17; Tumor Necrosis Factor Receptor Member 17; Tumor necrosis factor receptor superfamily member 17; TNFR17_HUMAN.
Organism Species:	Rabbit
Clonality:	Polyclonal
React Species:	Human,Mouse,Rat,
Applications:	WB=1:500-2000ELISA=1:500-1000IHC-P=1:400-800IHC-F=1:400-800Flow-Cyt=1µg/TestIF=1:100-500 (Paraffin sections need antigen repair) not yet tested in other applications. optimal dilutions/concentrations should be determined by the end user.
Molecular weight:	20kDa
Cellular localization:	The cell membrane
Form:	Lyophilized or Liquid
Concentration:	1mg/ml
immunogen:	KLH conjugated synthetic peptide derived from human BCMA:12-110/184<Extracellular>
Lsotype:	IgG
Purification:	affinity purified by Protein A
Storage Buffer:	0.01M TBS(pH7.4) with 1% BSA, 0.03% Proclin300 and 50% Glycerol.
Storage:	Store at -20 °C for one year. Avoid repeated freeze/thaw cycles. The lyophilized antibody is stable at room temperature for at least one month and for greater than a year when kept at -20°C. When reconstituted in sterile pH 7.4 0.01M PBS or diluent of antibody the antibody is stable for at least two weeks at 2-4 °C.
PubMed:	PubMed
Product Detail:	The protein encoded by this gene is a member of the TNF-receptor superfamily. This receptor is preferentially expressed in mature B lymphocytes, and may be important for B cell development and autoimmune response. This receptor has been shown to specifically bind to the tumor necrosis factor (ligand) superfamily, member 13b

(TNFSF13B/TALL-1/BAFF), and to lead to NF-kappaB and MAPK8/JNK activation. This receptor also binds to various TRAF family members, and thus may transduce signals for cell survival and proliferation. [provided by RefSeq].

Function:

Receptor for TNFSF13B/BlyS/BAFF and TNFSF13/APRIL. Promotes B-cell survival and plays a role in the regulation of humoral immunity. Activates NF-kappa-B and JNK.

Subunit:

Associates with TRAF1, TRAF2, TRAF3, TRAF5 and TRAF6.

Subcellular Location:

Cell membrane; Single-pass type III membrane protein. Endomembrane system; Single-pass type III membrane protein.

Tissue Specificity:

Expressed in mature B-cells, but not in T-cells or monocytes.

DISEASE:

Note=A chromosomal aberration involving TNFRSF17 is found in a form of T-cell acute lymphoblastic leukemia (T-ALL). Translocation t(4;16)(q26;p13) with IL2.

Similarity:

Contains 1 TNFR-Cys repeat.

SWISS:

Q02223

Gene ID:

608

Database links:

[Entrez Gene: 608](#)Human

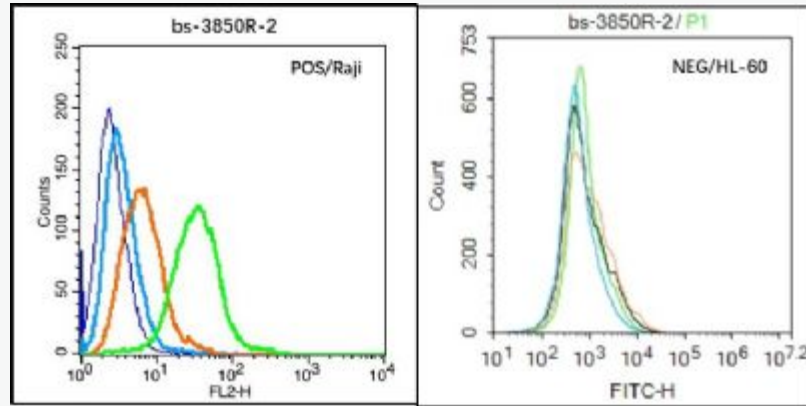
[Omin: 109545](#)Human

[SwissProt: Q02223](#)Human

[Unigene: 2556](#)Human

Important Note:

This product as supplied is intended for research use only, not for use in human, therapeutic or diagnostic applications.



Black line : Positive blank control (Raji); Negative blank control (HL60)

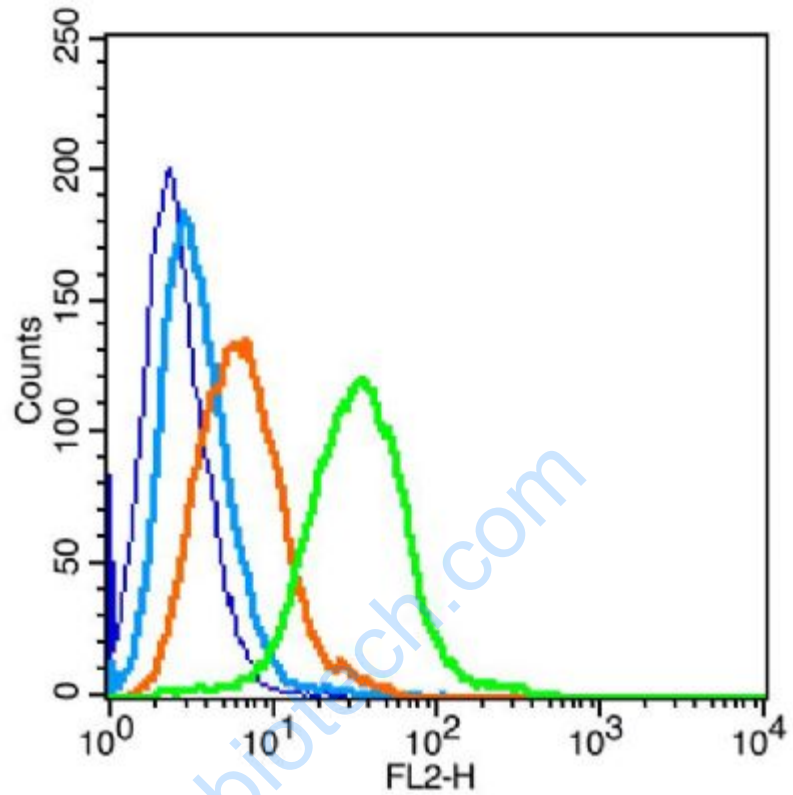
Green line : Primary Antibody (Rabbit Anti-BCMA antibody (SL3850R))

Orange line : Isotype Control Antibody (Rabbit IgG) .

Blue line : Secondary Antibody (Goat anti-rabbit IgG-PE)/(Goat anti-rabbit IgG-AF488)

Raji(Positive) and HL60 (Negative control) cells (black) were incubated in 5% BSA blocking buffer for 30 min at room temperature. Cells were then stained with BCMA Antibody(SL3850R)at 1:50 dilution in blocking buffer and incubated for 30 min at room temperature, washed twice with 2% BSA in PBS, followed by secondary antibody(blue) incubation for 40 min at room temperature. Acquisitions of 20,000 events were performed. Cells stained with primary antibody (green), and isotype control (orange).

Picture:



Blank control: Raji (fixed with 2% paraformaldehyde (10 min), then permeabilized with 90% ice-cold methanol for 30 min on ice).

Primary Antibody: Rabbit Anti-BCMA antibody (SL3850R), Dilution: 1 μ g in 100 μ L 1X PBS containing 0.5% BSA;

Isotype Control Antibody: Rabbit IgG (orange), used under the same conditions;

Secondary Antibody: Goat anti-rabbit IgG-PE (white blue), Dilution: 1:200 in 1 X PBS containing 0.5% BSA.