



Rabbit Anti-SH2D2A antibody

SL3858R

Product Name:	SH2D2A
Chinese Name:	血管内皮生长因子受体相关蛋白抗体
Alias:	SH2D2A/VEGF receptor associated protein SCAP; SH2 domain containing adapter protein; SH2 domain containing protein 2A; SH2 domain protein 2A; T cell specific adapter protein; T cell specific adapter protein TSAd; T cell specific adapter protein TSAd; T lymphocyte specific adaptor protein; TSAd; VEGF receptor associated protein; VRAP.
Organism Species:	Rabbit
Clonality:	Polyclonal
React Species:	Human,Mouse,Rat,Dog,Pig,Cow,Horse,Rabbit,
Applications:	WB=1:500-2000ELISA=1:500-1000IHC-P=1:400-800IHC-F=1:400-800Flow-Cyt=1µg/TestICC=1:100-500IF=1:100-500 (Paraffin sections need antigen repair) not yet tested in other applications. optimal dilutions/concentrations should be determined by the end user.
Molecular weight:	43kDa
Cellular localization:	cytoplasmic
Form:	Lyophilized or Liquid
Concentration:	1mg/ml
immunogen:	KLH conjugated synthetic peptide derived from human SH2D2A:101-200/389
Lsotype:	IgG
Purification:	affinity purified by Protein A
Storage Buffer:	0.01M TBS(pH7.4) with 1% BSA, 0.03% Proclin300 and 50% Glycerol.
Storage:	Store at -20 °C for one year. Avoid repeated freeze/thaw cycles. The lyophilized antibody is stable at room temperature for at least one month and for greater than a year when kept at -20°C. When reconstituted in sterile pH 7.4 0.01M PBS or diluent of antibody the antibody is stable for at least two weeks at 2-4 °C.
PubMed:	PubMed
Product Detail:	SH2D2A is thought to be a T-cell-specific adapter protein involved in the control of T-cell activation. It may play a role in the CD4-p56-LCK-dependent signal transduction pathway and also in normal and pathological angiogenesis.

Subunit:

Interacts with KDR. Interacts with TXK and ITK.

Subcellular Location:

Cytoplasmic

Tissue Specificity:

SH2D2A is thought to be a T-cell-specific adapter protein involved in the control of T-cell activation. It may play a role in the CD4-p56-LCK-dependent signal transduction pathway and also in normal and pathological angiogenesis.

Similarity:

Contains 1 SH2 domain.

SWISS:

Q9NP31

Gene ID:

9047

Database links:

[Entrez Gene: 9047](#)Human

[Entrez Gene: 27371](#)Mouse

[Omim: 604514](#)Human

[SwissProt: Q9NP31](#)Human

[SwissProt: Q9QXK9](#)Mouse

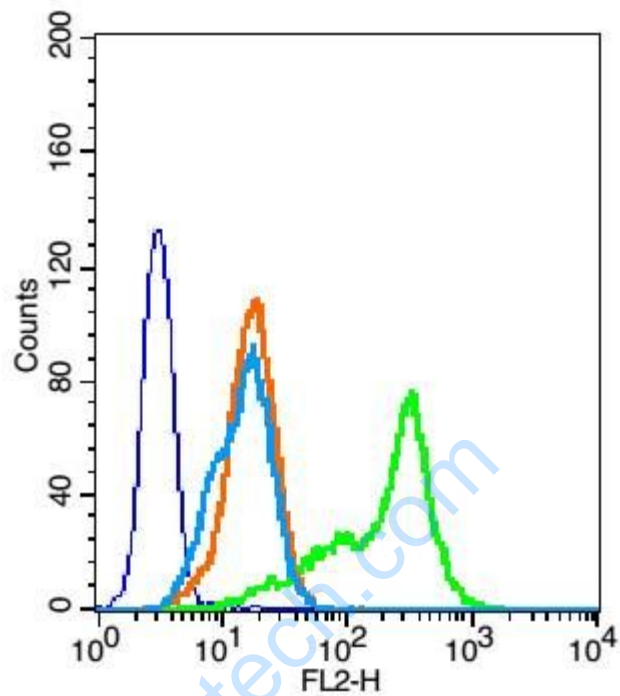
[Unigene: 103527](#)Human

[Unigene: 86361](#)Mouse

Important Note:

This product as supplied is intended for research use only, not for use in human, therapeutic or diagnostic applications.

Picture:



Blank control(blue): HUVEC cells(fixed with 2% paraformaldehyde (10 min),then permeabilized with 90% ice-cold methanol for 30 min on ice).

Primary Antibody:Rabbit Anti- SH2D2A antibody(SL3858R), Dilution: 1 μ g in 100 μ L 1X PBS containing 0.5% BSA;

Isotype Control Antibody: Rabbit IgG(orange) ,used under the same conditions);

Secondary Antibody: Goat anti-rabbit IgG-PE(white blue), Dilution: 1:200 in 1 X PBS containing 0.5% BSA.