



## Rabbit Anti-ATG3 antibody

SL4013R

<b>Product Name:</b>	ATG3
<b>Chinese Name:</b>	自噬相关蛋白3抗体
<b>Alias:</b>	2610016C12Rik; Apg 3; APG3; APG3 autophagy 3 like; APG3 like; APG3-like; APG3L; Apg3p; ATG 3; ATG3; ATG3 autophagy related 3 homolog; ATG3 autophagy related 3 homolog (S. cerevisiae); ATG3_HUMAN; Autophagy Apg3p/Aut1p like; Autophagy related protein 3; Autophagy-related protein 3; DKFZp564M1178; FLJ22125; hApg3; MGC15201; OTTHUMP00000214547; OTTHUMP00000214548; PC3 96; Protein PC3-96; Ubiquitin-like-conjugating enzyme ATG3.
<b>Organism Species:</b>	Rabbit
<b>Clonality:</b>	Polyclonal
<b>React Species:</b>	Human,Mouse,Rat,Chicken,Dog,Pig,Cow,Horse,Rabbit,
<b>Applications:</b>	WB=1:500-2000ELISA=1:500-1000IHC-P=1:400-800IHC-F=1:400-800IF=1:100-500 (Paraffin sections need antigen repair) not yet tested in other applications. optimal dilutions/concentrations should be determined by the end user.
<b>Molecular weight:</b>	36kDa
<b>Cellular localization:</b>	cytoplasmic <u>Mitochondrion</u>
<b>Form:</b>	Lyophilized or Liquid
<b>Concentration:</b>	1mg/ml
<b>immunogen:</b>	KLH conjugated synthetic peptide derived from human ATG3:51-150/314
<b>Lsotype:</b>	IgG
<b>Purification:</b>	affinity purified by Protein A
<b>Storage Buffer:</b>	0.01M TBS(pH7.4) with 1% BSA, 0.03% Proclin300 and 50% Glycerol.
<b>Storage:</b>	Store at -20 °C for one year. Avoid repeated freeze/thaw cycles. The lyophilized antibody is stable at room temperature for at least one month and for greater than a year when kept at -20°C. When reconstituted in sterile pH 7.4 0.01M PBS or diluent of antibody the antibody is stable for at least two weeks at 2-4 °C.
<b>PubMed:</b>	<a href="#">PubMed</a>
<b>Product Detail:</b>	E2-like enzyme involved in autophagy and mitochondrial homeostasis. Catalyzes the conjugation of ATG8-like proteins (GABARAP, GABARAPL1, GABARAPL2 or

MAP1LC3A) to phosphatidylethanolamine (PE). PE-conjugation to ATG8-like proteins is essential for autophagy. Preferred substrate is MAP1LC3A. Also acts as an autocatalytic E2-like enzyme, catalyzing the conjugation of ATG12 to itself, ATG12 conjugation to ATG3 playing a role in mitochondrial homeostasis but not in autophagy. ATG7 (E1-like enzyme) facilitates this reaction by forming an E1-E2 complex with ATG3.

**Function:**

E2-like enzyme involved in autophagy and mitochondrial homeostasis. Catalyzes the conjugation of ATG8-like proteins (GABARAP, GABARAPL1, GABARAPL2 or MAP1LC3A) to phosphatidylethanolamine (PE). PE-conjugation to ATG8-like proteins is essential for autophagy. Preferred substrate is MAP1LC3A. Also acts as an autocatalytic E2-like enzyme, catalyzing the conjugation of ATG12 to itself, ATG12 conjugation to ATG3 playing a role in mitochondrial homeostasis but not in autophagy. ATG7 (E1-like enzyme) facilitates this reaction by forming an E1-E2 complex with ATG3.

**Subunit:**

Interacts with ATG7 and ATG12. The complex, composed of ATG3 and ATG7, plays a role in the conjugation of ATG12 to ATG5. Interacts with FBNP1L.

**Subcellular Location:**

Cytoplasm.

**Tissue Specificity:**

Widely expressed, with a highest expression in heart, skeletal muscle, kidney, liver and placenta.

**Post-translational modifications:**

Conjugated to ATG12 at Lys-243. ATG12-conjugation plays a role in regulation of mitochondrial homeostasis and cell death, while it is not involved in PE-conjugation to ATG8-like proteins and autophagy.

**Similarity:**

Belongs to the ATG3 family.

**SWISS:**

Q9NT62

**Gene ID:**

64422

**Database links:**

[Entrez Gene: 64422](#)Human

[Entrez Gene: 67841](#)Mouse

[Entrez Gene: 171415](#)Rat

[Oimim: 609606](#)Human

[SwissProt: Q9NT62](#)Human

[SwissProt: Q9CPX6](#)Mouse

[SwissProt: Q6AZ50](#)Rat

[Unigene: 477126](#)Human

[Unigene: 41775](#)Mouse

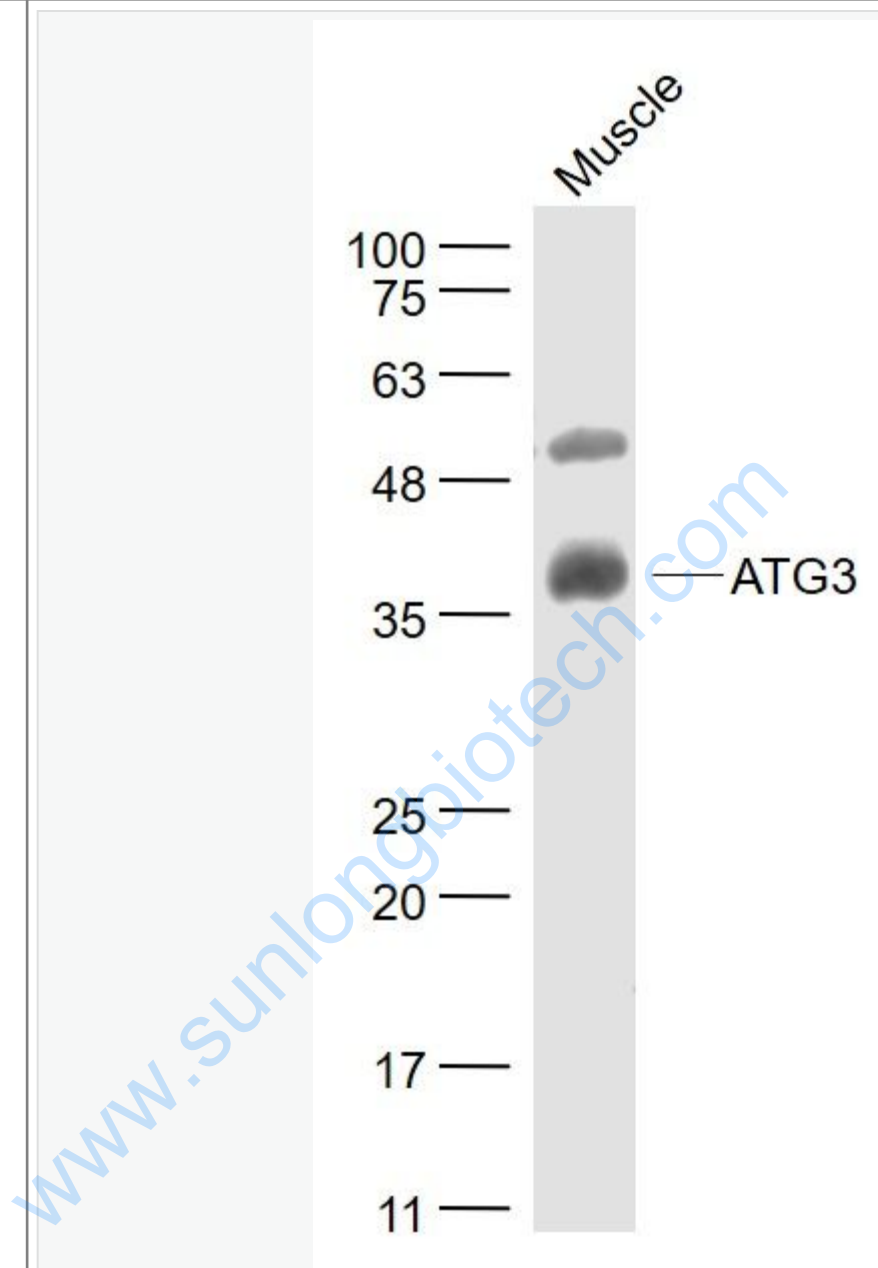
[Unigene: 3084](#)Rat

**Important Note:**

This product as supplied is intended for research use only, not for use in human, therapeutic or diagnostic applications.

[www.sunlongbiotech.com](http://www.sunlongbiotech.com)

Picture:



Sample:

Muscle (Mouse) Lysate at 40 ug

Primary: Anti- ATG3 (SL4013R) at 1/1000 dilution

Secondary: IRDye800CW Goat Anti-Rabbit IgG at 1/20000 dilution

Predicted band size: 36 kD

	Observed band size: 36 kD
--	---------------------------

[www.sunlongbiotech.com](http://www.sunlongbiotech.com)