



Rabbit Anti-phospho-p23 (Ser113) antibody

SL4020R

Product Name:	phospho-p23 (Ser113)
Chinese Name:	磷酸化端粒酶Binding proteinP23抗体
Alias:	Telomerase Binding Protein, P23; Prostaglandin E synthase 3; Cytosolic prostaglandin E2 synthase; cPGES; Telomerase-binding protein p23; Hsp90 co-chaperone; Progesterone receptor complex p23; PTGES3; P23; TEBP; TEBP HUMAN.
Organism Species:	Rabbit
Clonality:	Polyclonal
React Species:	Human,Mouse,Rat,Chicken,Pig,Cow,Horse,Rabbit,
Applications:	WB=1:500-2000ELISA=1:500-1000IHC-P=1:400-800IHC-F=1:400-800IF=1:100-500 (Paraffin sections need antigen repair) not yet tested in other applications. optimal dilutions/concentrations should be determined by the end user.
Molecular weight:	18kDa
Cellular localization:	cytoplasmic
Form:	Lyophilized or Liquid
Concentration:	1mg/ml
immunogen:	KLH conjugated Synthesised phosphopeptide derived from human Telomerase Binding Protein, P23 around the phosphorylation site of Ser113:DD(p-S)DE
Lsotype:	IgG
Purification:	affinity purified by Protein A
Storage Buffer:	0.01M TBS(pH7.4) with 1% BSA, 0.03% Proclin300 and 50% Glycerol.
Storage:	Store at -20 °C for one year. Avoid repeated freeze/thaw cycles. The lyophilized antibody is stable at room temperature for at least one month and for greater than a year when kept at -20°C. When reconstituted in sterile pH 7.4 0.01M PBS or diluent of antibody the antibody is stable for at least two weeks at 2-4 °C.
PubMed:	PubMed
Product Detail:	Molecular chaperone that localizes to genomic response elements in a hormone-dependent manner and disrupts receptor-mediated transcriptional activation, by

promoting disassembly of transcriptional regulatory complexes. Belongs to the p23/wos2 family.

Function:

Molecular chaperone that localizes to genomic response elements in a hormone-dependent manner and disrupts receptor-mediated transcriptional activation, by promoting disassembly of transcriptional regulatory complexes.

Subunit:

Binds to telomerase and to the progesterone receptor.

Subcellular Location:

Cytoplasm.

Similarity:

Belongs to the p23/wos2 family.
Contains 1 CS domain.

SWISS:

Q15185

Gene ID:

10728

Database links:

[Entrez Gene: 10728](#)Human

[Entrez Gene: 100043508](#)Mouse

[Entrez Gene: 100048119](#)Mouse

[Entrez Gene: 56351](#)Mouse

[Entrez Gene: 362809](#)Rat

[Oimim: 607061](#)Human

[SwissProt: Q15185](#)Human

[SwissProt: Q9R0Q7](#)Mouse

[SwissProt: P83868](#)Rat

[Unigene: 50425](#)Human

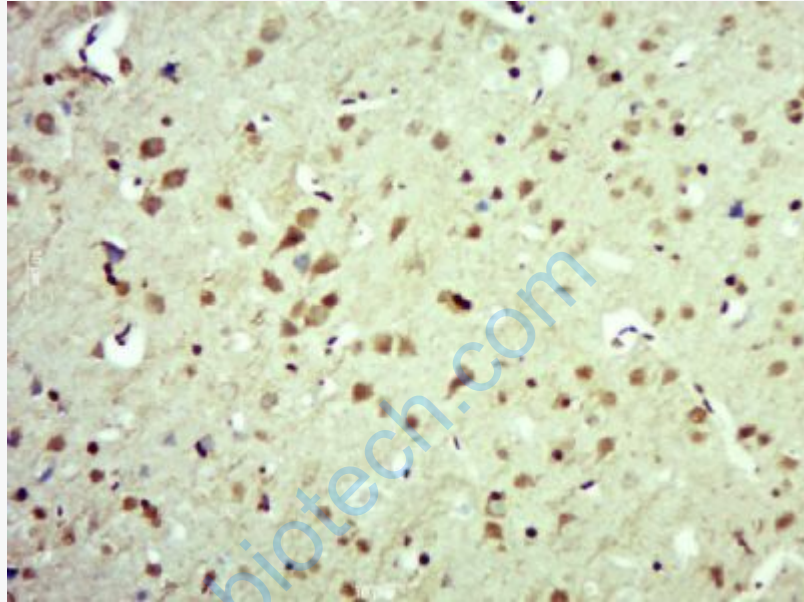
[Unigene: 305816](#)Mouse

[Unigene: 2344](#)Rat

Important Note:

This product as supplied is intended for research use only, not for use in human, therapeutic or diagnostic applications.

Telomerase Binding Protein,P23是一种端粒酶Binding protein。



Picture:

Paraformaldehyde-fixed, paraffin embedded (Mouse brain); Antigen retrieval by boiling in sodium citrate buffer (pH6.0) for 15min; Block endogenous peroxidase by 3% hydrogen peroxide for 20 minutes; Blocking buffer (normal goat serum) at 37°C for 30min; Antibody incubation with (phospho-p23 (Ser113)) Polyclonal Antibody, Unconjugated (SL4020R) at 1:500 overnight at 4°C, followed by a conjugated secondary (sp-0023) for 20 minutes and DAB staining.