



Rabbit Anti-Pancreatic Amylase antibody

SL4030R

Product Name:	Pancreatic Amylase
Chinese Name:	胰淀粉酶抗体
Alias:	Alpha amylase; Alpha amylase pancreatic precursor; AMY2; AMY2A; AMY2B; Amylase alpha 2A; Amylase alpha 2A pancreatic; Amylase alpha 2B; Amylase alpha 2B pancreatic; Amylase pancreatic alpha 2A; Amylase pancreatic alpha 2B; Pancreatic alpha amylase; AMYP_HUMAN.
Organism Species:	Rabbit
Clonality:	Polyclonal
React Species:	Human,Mouse,Rat,Dog,Pig,Cow,Horse,Rabbit,
Applications:	WB=1:500-2000ELISA=1:500-1000IHC-P=1:400-800IHC-F=1:400-800IF=1:100-500 (Paraffin sections need antigen repair) not yet tested in other applications. optimal dilutions/concentrations should be determined by the end user.
Molecular weight:	56kDa
Cellular localization:	Extracellular matrixSecretory protein
Form:	Lyophilized or Liquid
Concentration:	1mg/ml
immunogen:	KLH conjugated synthetic peptide derived from human Pancreatic Amylase:151-250/511
Lsotype:	IgG
Purification:	affinity purified by Protein A
Storage Buffer:	0.01M TBS(pH7.4) with 1% BSA, 0.03% Proclin300 and 50% Glycerol.
Storage:	Store at -20 °C for one year. Avoid repeated freeze/thaw cycles. The lyophilized antibody is stable at room temperature for at least one month and for greater than a year when kept at -20°C. When reconstituted in sterile pH 7.4 0.01M PBS or diluent of antibody the antibody is stable for at least two weeks at 2-4 °C.
PubMed:	PubMed
Product Detail:	Pancreatic amylase is a digestive enzyme secreted by the pancreas. It consists of a single polypeptide chain with a molecular weight of 54 kDa.Pancreatic amylase and salivary amylase are the products of separate genes and, although they share 98% amino acid

sequence homology, they differ in molecular size, isoelectric point and antigenic properties. Measurement of amylase concentrations in serum is a diagnostic test for various pancreatic disorders (especially acute and relapsing pancreatitis).

Subunit:

Monomer.

Subcellular Location:

Secreted, extracellular space.

Similarity:

Belongs to the glycosyl hydrolase 13 family.

SWISS:

P04746

Gene ID:

279

Database links:

[Entrez Gene: 279](#)Human

[Entrez Gene: 280](#)Human

[Entrez Gene: 545562](#)Mouse

[Omim: 104650](#)Human

[Omim: 104660](#)Human

[SwissProt: P04746](#)Human

[SwissProt: P19961](#)Human

[SwissProt: P00688](#)Mouse

[Unigene: 484588](#)Human

[Unigene: 654437](#)Human

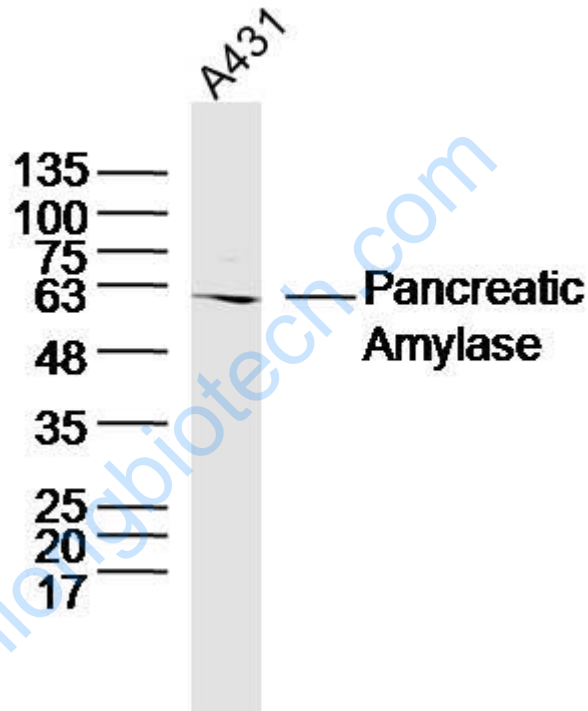
Important Note:

This product as supplied is intended for research use only, not for use in human, therapeutic or diagnostic applications.

????胰淀粉酶由胰腺以活性状态排入消化道, 是最重要的水解碳水化合物的酶, 和唾液腺分泌的淀粉酶一样都属于 α -淀粉酶, 作用于 α -1, 4糖苷键, 对分支上的 α -1, 6糖苷键无作用, 故又称淀粉内切酶, 其作用的最适pH为6.9, 可通过肾小球滤过, 是唯一能在正常时于尿中出现的血浆酶。

????人体的其他组织如卵巢、输卵管、肺、睾丸、精液、乳腺等的提取物中都发现有淀粉酶活性;血液、尿液、乳液中也含淀粉酶。血液淀粉酶中主要来自胰腺、唾液腺,尿液中淀粉酶则来自于血液。当罹患胰腺疾病,或有胰腺外分泌功能障碍时都可引起其活性升高或降低,有助于胰腺疾病的诊断。尿淀粉酶水平波动较大,所以用血清淀粉酶检测为好,或两者同时测定。淀粉酶活性变化亦可见于某些非胰腺疾患。

Picture:



Sample:

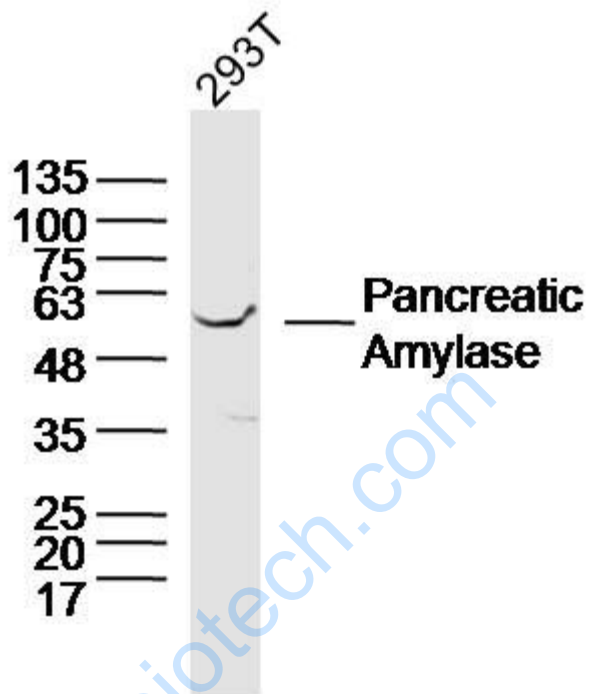
A431(Human) Cell Lysate at 30 ug

Primary: Anti-Pancreatic Amylase (SL4030R) at 1/300 dilution

Secondary: IRDye800CW Goat Anti-Rabbit IgG at 1/20000 dilution

Predicted band size: 56 kD

Observed band size: 61 kD



Sample:

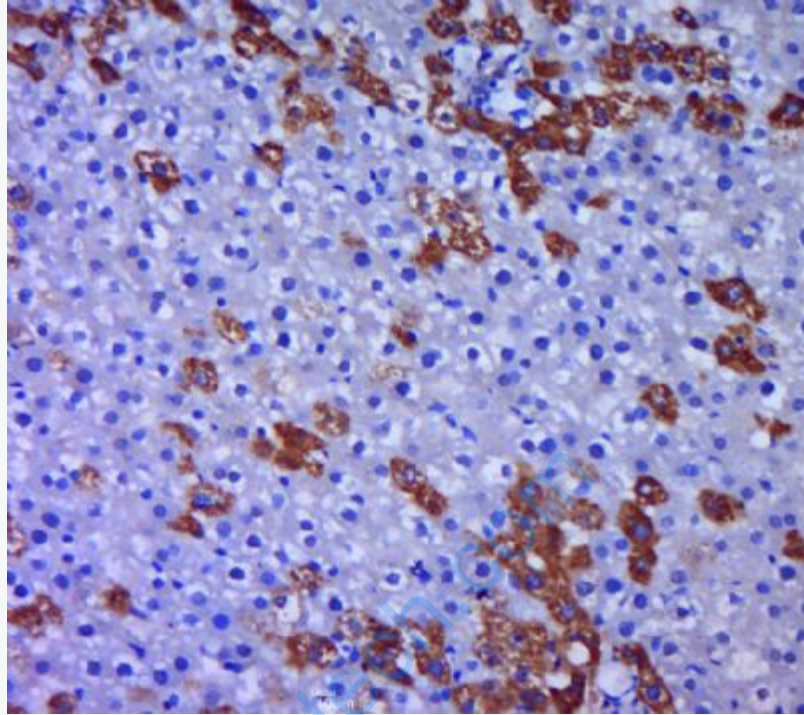
293T(Human) Cell Lysate at 30 ug

Primary: Anti-Pancreatic Amylase (SL4030R) at 1/300 dilution

Secondary: IRDye800CW Goat Anti-Rabbit IgG at 1/20000 dilution

Predicted band size: 56 kD

Observed band size: 56 kD



Paraformaldehyde-fixed, paraffin embedded (rat liver tissue); Antigen retrieval by boiling in sodium citrate buffer (pH6.0) for 15min; Block endogenous peroxidase by 3% hydrogen peroxide for 20 minutes; Blocking buffer (normal goat serum) at 37°C for 30min; Antibody incubation with (Pancreatic Amylase) Polyclonal Antibody, Unconjugated (SL4030R) at 1:400 overnight at 4°C, followed by a conjugated secondary (sp-0023) for 20 minutes and DAB staining.