



Rabbit Anti-GPD2 antibody

SL4061R

Product Name:	GPD2
Chinese Name:	Mitochondrion甘油三磷酸脱氢酶2抗体
Alias:	GDH2; Glycerol 3 phosphate dehydrogenase 2 (mitochondrial); Glycerol 3 phosphate dehydrogenase 2; Glycerol 3 phosphate dehydrogenase mitochondrial; Glycerol-3-phosphate dehydrogenase; GPD 2; GPD-2; GPD M; GPD-M; GPDH M; GPDH-M; GPDM; GPDM_HUMAN; mGPDH; mitochondrial; Mitochondrial glycerophosphate dehydrogenase; mtGPD; OTTHUMP00000162788; OTTHUMP00000204452; OTTHUMP00000204453; OTTHUMP00000204458.
Organism Species:	Rabbit
Clonality:	Polyclonal
React Species:	Human,Mouse,Rat,Dog,Pig,Cow,Horse,Rabbit,
Applications:	ELISA=1:500-1000IHC-P=1:400-800IHC-F=1:400-800IF=1:100-500 (Paraffin sections need antigen repair) not yet tested in other applications. optimal dilutions/concentrations should be determined by the end user.
Molecular weight:	76kDa
Cellular localization:	cytoplasmicMitochondrion
Form:	Lyophilized or Liquid
Concentration:	1mg/ml
immunogen:	KLH conjugated synthetic peptide derived from human GPD2:165-270/727
Lsotype:	IgG
Purification:	affinity purified by Protein A
Storage Buffer:	0.01M TBS(pH7.4) with 1% BSA, 0.03% Proclin300 and 50% Glycerol.
Storage:	Store at -20 °C for one year. Avoid repeated freeze/thaw cycles. The lyophilized antibody is stable at room temperature for at least one month and for greater than a year when kept at -20°C. When reconstituted in sterile pH 7.4 0.01M PBS or diluent of antibody the antibody is stable for at least two weeks at 2-4 °C.
PubMed:	PubMed
Product Detail:	The protein encoded by this gene localizes to the inner mitochondrial membrane and catalyzes the conversion of glycerol-3-phosphate to dihydroxyacetone phosphate, using

FAD as a cofactor. Along with GDP1, the encoded protein constitutes the glycerol phosphate shuttle, which reoxidizes NADH formed during glycolysis. Two transcript variants encoding the same protein have been found for this gene.[provided by RefSeq, Jan 2010].

Subcellular Location:

Mitochondrion.

Similarity:

Belongs to the FAD-dependent glycerol-3-phosphate dehydrogenase family. Contains 2 EF-hand domains.

SWISS:

P43304

Gene ID:

2820

Database links:

[Entrez Gene: 2820](#)Human

[Entrez Gene: 14571](#)Mouse

[Entrez Gene: 25062](#)Rat

[Oimim: 138430](#)Human

[SwissProt: P43304](#)Human

[SwissProt: Q64521](#)Mouse

[SwissProt: P35571](#)Rat

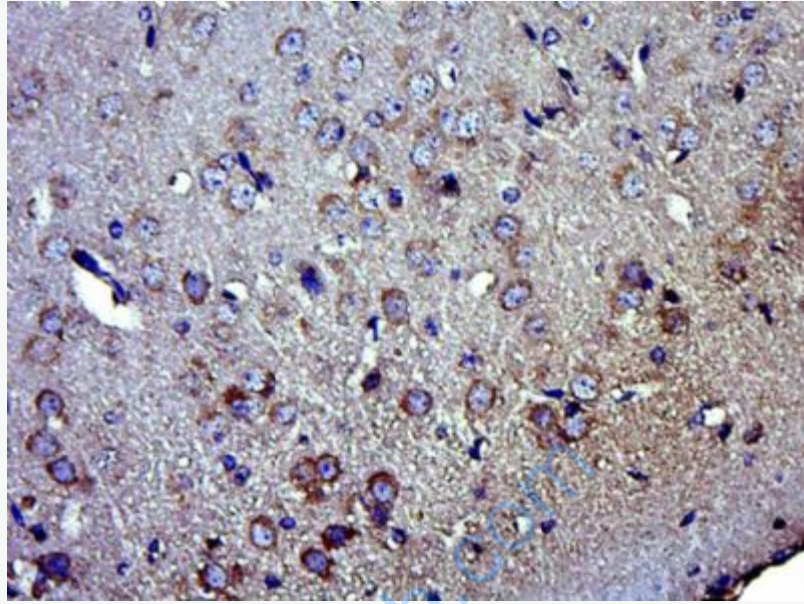
[Unigene: 512382](#)Human

[Unigene: 3711](#)Mouse

[Unigene: 89705](#)Rat

Important Note:

This product as supplied is intended for research use only, not for use in human, therapeutic or diagnostic applications.



Picture:

Paraformaldehyde-fixed, paraffin embedded (Mouse brain); Antigen retrieval by boiling in sodium citrate buffer (pH6.0) for 15min; Block endogenous peroxidase by 3% hydrogen peroxide for 20 minutes; Blocking buffer (normal goat serum) at 37°C for 30min; Antibody incubation with (GPD2) Polyclonal Antibody, Unconjugated (SL4061R) at 1:400 overnight at 4°C, followed by operating according to SP Kit(Rabbit) (sp-0023) instructions and DAB staining.