



Rabbit Anti-Connexin-37 antibody

SL4067R

Product Name:	Connexin-37
Chinese Name:	间隙连接蛋白37抗体
Alias:	Connexin37; Connexin-37; Connexin 37; CX37; Gap junction alpha 4 protein; gap junction protein, alpha 4 37kDa (connexin 37); gap junction protein, alpha 4, 37kD (connexin 37); GJA4; CXA4_HUMAN; Gap junction alpha-4 protein; OTTHUMP00000004181; OTTHUMP00000004182.
Organism Species:	Rabbit
Clonality:	Polyclonal
React Species:	Human,Mouse,Rat,Pig,Cow,Horse,Rabbit,Guinea Pig,
Applications:	WB=1:500-2000ELISA=1:500-1000IHC-F=1:400-800IF=1:100-500 (Paraffin sections need antigen repair) not yet tested in other applications. optimal dilutions/concentrations should be determined by the end user.
Molecular weight:	37kDa
Cellular localization:	The cell membrane
Form:	Lyophilized or Liquid
Concentration:	1mg/ml
immunogen:	KLH conjugated synthetic peptide derived from human Connexin 37:151-250/333<Extracellular>
Lsotype:	IgG
Purification:	affinity purified by Protein A
Storage Buffer:	0.01M TBS(pH7.4) with 1% BSA, 0.03% Proclin300 and 50% Glycerol.
Storage:	Store at -20 °C for one year. Avoid repeated freeze/thaw cycles. The lyophilized antibody is stable at room temperature for at least one month and for greater than a year when kept at -20°C. When reconstituted in sterile pH 7.4 0.01M PBS or diluent of antibody the antibody is stable for at least two weeks at 2-4 °C.
PubMed:	PubMed
Product Detail:	The Connexin 37/GJA4 gene encodes a member of the connexin gene family. The encoded protein is a component of gap junctions, which are composed of arrays of intercellular channels that provide a route for the diffusion of low molecular weight

materials from cell to cell. Mutations in this gene have been associated with atherosclerosis and a higher risk of myocardial infarction.

Subunit:

A connexon is composed of a hexamer of connexins.

Subcellular Location:

Cell membrane; Multi-pass membrane protein. Cell junction, gap junction.

Tissue Specificity:

Expressed in multiple organs and tissues, including heart, uterus, ovary, and blood vessel endothelium.

SWISS:

P35212

Gene ID:

2701

Database links:

[Entrez Gene: 2701](#) Human

[Entrez Gene: 25655](#) Rat

[Omim: 121012](#) Human

[SwissProt: P35212](#) Human

[SwissProt: Q03190](#) Rat

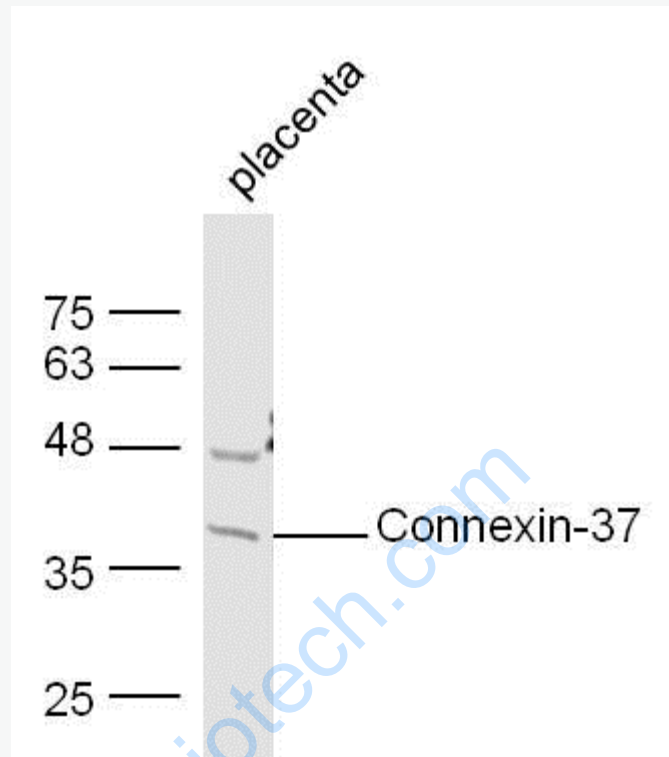
[Unigene: 296310](#) Human

[Unigene: 23406](#) Rat

Important Note:

This product as supplied is intended for research use only, not for use in human, therapeutic or diagnostic applications.

Picture:



Sample:

placenta (Mouse) Lysate at 40 ug

Primary: Anti-Connexin-37 (Bs-4067R) at 1/300 dilution

Secondary: IRDye800CW Goat Anti-Rabbit IgG at 1/20000 dilution

Predicted band size: 37 kD

Observed band size: 37 kD