



Rabbit Anti-phospho-CPI17 alpha (Thr38) antibody

SL4073R

Product Name:	phospho-CPI17 alpha (Thr38)
Chinese Name:	磷酸化蛋白磷酸激酶PKC/CPI-17抗体
Alias:	CPI17 alpha (phospho T38); p-CPI17 alpha (phospho T38); 17kDa PKC potentiated inhibitory protein of PP1; CPI 17 alpha; CPI 17; CPI 17alpha; CPI17; CPI-17; PKC potentiated inhibitory protein of PP1; PPP1INL; PPP1R14A; Protein phosphatase 1; Protein phosphatase 1 regulatory (inhibitor) subunit 14A; Protein phosphatase 1 regulatory subunit 14A; Regulatory subunit 14A; 17 kDa PKC-potentiated inhibitory protein of PP1; 17-KDa protein; 17kDa PKC potentiated inhibitory protein of PP1; PKC potentiated inhibitory protein of PP1; PKC potentiated inhibitory protein of PP1, 17-KD; PP14A_HUMAN; Protein kinase C-potentiated inhibitor of protein phosphatase 1, 17-KD; Protein kinase C-potentiated inhibitor protein of 17 kDa; Protein phosphatase 1; Protein phosphatase 1 regulatory (inhibitor) subunit 14A; Regulatory subunit 14A.
Organism Species:	Rabbit
Clonality:	Polyclonal
React Species:	Human,Mouse,Rat,
Applications:	WB=1:500-2000ELISA=1:500-1000IHC-P=1:400-800IHC-F=1:400-800IF=1:100-500 (Paraffin sections need antigen repair) not yet tested in other applications. optimal dilutions/concentrations should be determined by the end user.
Molecular weight:	17kDa
Cellular localization:	cytoplasmic
Form:	Lyophilized or Liquid
Concentration:	1mg/ml
immunogen:	KLH conjugated Synthesised phosphopeptide derived from human CPI17 alpha around the phosphorylation site of Thr38:RV(p-T)VK
Lsotype:	IgG
Purification:	affinity purified by Protein A
Storage Buffer:	0.01M TBS(pH7.4) with 1% BSA, 0.03% Proclin300 and 50% Glycerol.
Storage:	Store at -20 °C for one year. Avoid repeated freeze/thaw cycles. The lyophilized

	antibody is stable at room temperature for at least one month and for greater than a year when kept at -20°C. When reconstituted in sterile pH 7.4 0.01M PBS or diluent of antibody the antibody is stable for at least two weeks at 2-4 °C.
PubMed:	PubMed
Product Detail:	<p>The protein encoded by this gene belongs to the protein phosphatase 1 (PP1) inhibitor family. This protein is an inhibitor of smooth muscle myosin phosphatase, and has higher inhibitory activity when phosphorylated. Inhibition of myosin phosphatase leads to increased myosin phosphorylation and enhanced smooth muscle contraction. Alternatively spliced transcript variants encoding different isoforms have been noted for this gene. [provided by RefSeq, Sep 2011]</p> <p>Function: Inhibitor of PPP1CA. Has over 1000-fold higher inhibitory activity when phosphorylated, creating a molecular switch for regulating the phosphorylation status of PPP1CA substrates and smooth muscle contraction.</p> <p>Subcellular Location: Cytoplasm.</p> <p>Tissue Specificity: Isoform 1 is detected in aorta and testis. Isoform 2 is detected in aorta.</p> <p>Similarity: Belongs to the PP1 inhibitor family.</p> <p>SWISS: Q96A00</p> <p>Gene ID: 94274</p> <p>Database links: Entrez Gene: 94274 Human Entrez Gene: 68458 Mouse Entrez Gene: 114004 Rat Omim: 608153 Human SwissProt: Q96A00 Human SwissProt: Q91VC7 Mouse SwissProt: Q99MC0 Rat</p>

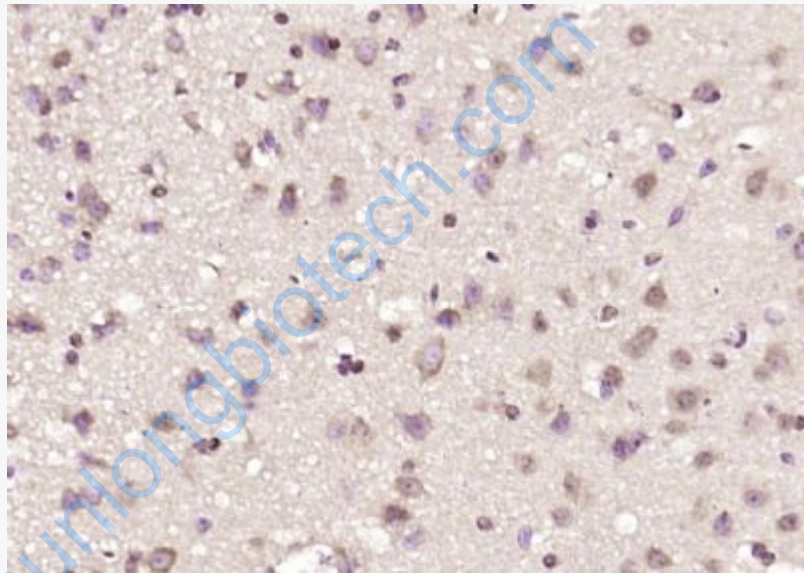
[Unigene: 631569](#) Human

[Unigene: 2343](#) Mouse

[Unigene: 73852](#) Rat

Important Note:

This product as supplied is intended for research use only, not for use in human, therapeutic or diagnostic applications.



Picture:

Paraformaldehyde-fixed, paraffin embedded (mouse brain); Antigen retrieval by boiling in sodium citrate buffer (pH6.0) for 15min; Block endogenous peroxidase by 3% hydrogen peroxide for 20 minutes; Blocking buffer (normal goat serum) at 37°C for 30min; Antibody incubation with (phospho-CPI17 alpha (Thr38)) Polyclonal Antibody, Unconjugated (SL4073R) at 1:200 overnight at 4°C, followed by operating according to SP Kit(Rabbit) (sp-0023) instructions and DAB staining.