



## Rabbit Anti-LATS2 antibody

SL4081R

<b>Product Name:</b>	LATS2
<b>Chinese Name:</b>	Tumour抑制基因LATS2抗体
<b>Alias:</b>	Kinase phosphorylated during mitosis; KPM; Large tumor suppressor homolog 2; Large tumor suppressor homolog 2 Drosophila; LATS large tumor suppressor Drosophila homolog 2; LATS large tumor suppressor homolog 2; Serine/threonine kinase kpm; Serine/threonine protein kinase kpm; Warts like kinase; FLJ13161; Kinase phosphorylated during mitosis protein; Large tumor suppressor kinase 2; Lats2; LATS2 HUMAN.
<b>Organism Species:</b>	Rabbit
<b>Clonality:</b>	Polyclonal
<b>React Species:</b>	Human,Mouse,Rat,Chicken,Dog,Cow,Horse,Rabbit,
<b>Applications:</b>	ELISA=1:500-1000IHC-P=1:400-800IHC-F=1:400-800IF=1:100-500 (Paraffin sections need antigen repair) not yet tested in other applications. optimal dilutions/concentrations should be determined by the end user.
<b>Molecular weight:</b>	120kDa
<b>Cellular localization:</b>	cytoplasmic
<b>Form:</b>	Lyophilized or Liquid
<b>Concentration:</b>	1mg/ml
<b>immunogen:</b>	KLH conjugated synthetic peptide derived from human LATS2:641-740/1088
<b>Isotype:</b>	IgG
<b>Purification:</b>	affinity purified by Protein A
<b>Storage Buffer:</b>	0.01M TBS(pH7.4) with 1% BSA, 0.03% Proclin300 and 50% Glycerol.
<b>Storage:</b>	Store at -20 °C for one year. Avoid repeated freeze/thaw cycles. The lyophilized antibody is stable at room temperature for at least one month and for greater than a year when kept at -20°C. When reconstituted in sterile pH 7.4 0.01M PBS or diluent of antibody the antibody is stable for at least two weeks at 2-4 °C.
<b>PubMed:</b>	<a href="#">PubMed</a>
<b>Product Detail:</b>	This gene encodes a serine/threonine protein kinase belonging to the LATS tumor suppressor family. The protein localizes to centrosomes during interphase, and early and

late metaphase. It interacts with the centrosomal proteins aurora-A and ajuba and is required for accumulation of gamma-tubulin and spindle formation at the onset of mitosis. It also interacts with a negative regulator of p53 and may function in a positive feedback loop with p53 that responds to cytoskeleton damage. Additionally, it can function as a co-repressor of androgen-responsive gene expression. [provided by RefSeq].

**Function:**

Negative regulator of YAP1 in the Hippo signaling pathway that plays a pivotal role in organ size control and tumor suppression by restricting proliferation and promoting apoptosis. The core of this pathway is composed of a kinase cascade wherein STK3/MST2 and STK4/MST1, in complex with its regulatory protein SAV1, phosphorylates and activates LATS1/2 in complex with its regulatory protein MOB1, which in turn phosphorylates and inactivates YAP1 oncoprotein and WWTR1/TAZ. Phosphorylation of YAP1 by LATS2 inhibits its translocation into the nucleus to regulate cellular genes important for cell proliferation, cell death, and cell migration. Acts as a tumor suppressor which plays a critical role in centrosome duplication, maintenance of mitotic fidelity and genomic stability. Negatively regulates G1/S transition by down-regulating cyclin E/CDK2 kinase activity. Negative regulator of the androgen receptor.

**Subunit:**

Interacts with and is phosphorylated by AURKA. Binds to AR. Interacts with AJUBA during mitosis and this complex regulates organization of the spindle apparatus through recruitment of gamma-tubulin to the centrosome. Interacts (via PPxY motif) with YAP1 (via WW domains). Interacts with MOB1A and MOB1B. Interacts with LIMD1, WTIP and AJUBA.

**Subcellular Location:**

Cytoplasm, cytoskeleton, centrosome. Cytoplasm. Cytoplasm, cytoskeleton, spindle pole.

**Tissue Specificity:**

Expressed at high levels in heart and skeletal muscle and at lower levels in all other tissues examined.

**Post-translational modifications:**

Autophosphorylated and phosphorylated during M-phase and the G1/S-phase of the cell cycle. Phosphorylated and activated by STK3/MST2.

**Similarity:**

Belongs to the protein kinase superfamily. AGC Ser/Thr protein kinase family. Contains 1 AGC-kinase C-terminal domain. Contains 1 protein kinase domain. Contains 1 UBA domain.

**SWISS:**  
Q9NRM7

**Gene ID:**  
26524

**Database links:**

[Entrez Gene: 26524](#) Human

[Entrez Gene: 50523](#) Mouse

[Entrez Gene: 305922](#) Rat

[Omir: 604861](#) Human

[SwissProt: Q9NRM7](#) Human

[SwissProt: Q7TSJ6](#) Mouse

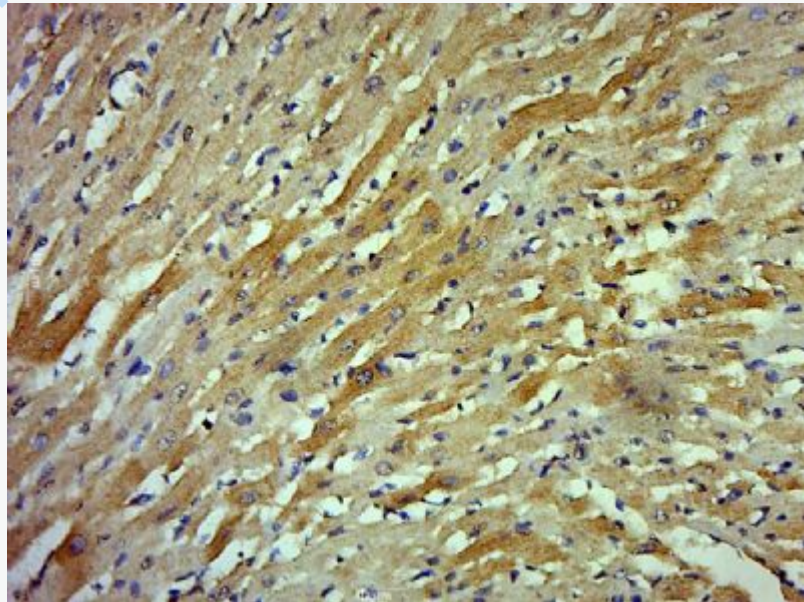
[Unigene: 78960](#) Human

[Unigene: 347899](#) Mouse

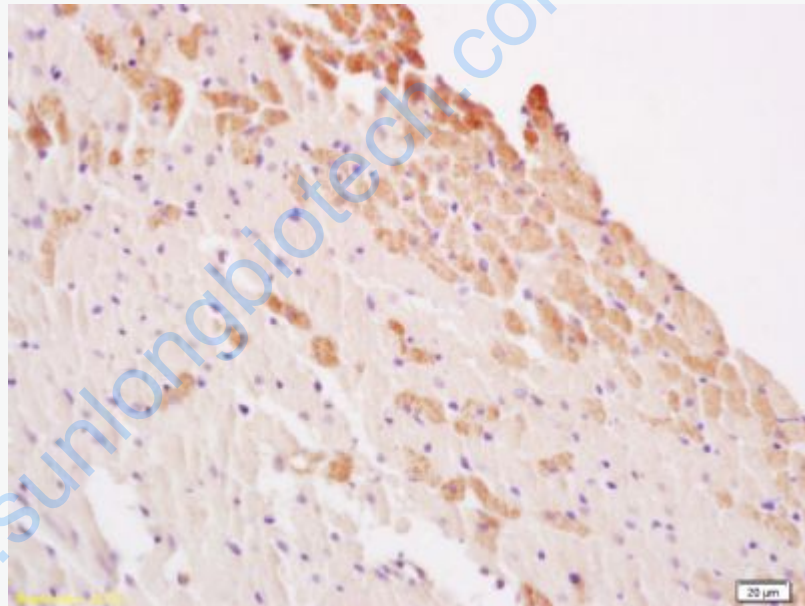
**Important Note:**

This product as supplied is intended for research use only, not for use in human, therapeutic or diagnostic applications.

**Picture:**



Paraformaldehyde-fixed, paraffin embedded (Rat heart); Antigen retrieval by boiling in sodium citrate buffer (pH6.0) for 15min; Block endogenous peroxidase by 3% hydrogen peroxide for 20 minutes; Blocking buffer (normal goat serum) at 37°C for 30min; Antibody incubation with (LATS2) Polyclonal Antibody, Unconjugated (SL4081R) at 1:500 overnight at 4°C, followed by a conjugated secondary (sp-0023) for 20 minutes and DAB staining.



Tissue/cell: rat heart tissue; 4% Paraformaldehyde-fixed and paraffin-embedded;  
Antigen retrieval: citrate buffer ( 0.01M, pH 6.0 ), Boiling bathing for 15min; Block endogenous peroxidase by 3% Hydrogen peroxide for 30min; Blocking buffer (normal goat serum,C-0005) at 37°C for 20 min;  
Incubation: Anti-LATS2 Polyclonal Antibody, Unconjugated(SL4081R) 1:200, overnight at 4°C, followed by conjugation to the secondary antibody(SP-0023) and

	DAB(C-0010) staining
--	----------------------

[www.sunlongbiotech.com](http://www.sunlongbiotech.com)