



## Rabbit Anti-phospho-LATS2 (Ser83) antibody

SL4082R

<b>Product Name:</b>	phospho-LATS2 (Ser83)
<b>Chinese Name:</b>	磷酸化Tumour抑制基因LATS2抗体
<b>Alias:</b>	Kinase phosphorylated during mitosis; KPM; Large tumor suppressor homolog 2; Large tumor suppressor homolog 2 Drosophila; LATS large tumor suppressor Drosophila homolog 2; LATS large tumor suppressor homolog 2; Serine/threonine kinase kpm; Serine/threonine protein kinase kpm; Warts like kinase; FLJ13161; Kinase phosphorylated during mitosis protein; Large tumor suppressor kinase 2; Lats2; LATS2 HUMAN.
<b>Organism Species:</b>	Rabbit
<b>Clonality:</b>	Polyclonal
<b>React Species:</b>	Human,Mouse,Rat,Dog,Pig,Cow,Horse,
<b>Applications:</b>	WB=1:500-2000ELISA=1:500-1000IHC-P=1:400-800IHC-F=1:400-800IF=1:100-500 (Paraffin sections need antigen repair) not yet tested in other applications. optimal dilutions/concentrations should be determined by the end user.
<b>Molecular weight:</b>	120-150kDa
<b>Cellular localization:</b>	cytoplasmic
<b>Form:</b>	Lyophilized or Liquid
<b>Concentration:</b>	1mg/ml
<b>immunogen:</b>	KLH conjugated Synthesised phosphopeptide derived from human LATS2 around the phosphorylation site of Ser83:RY(p-S)LL
<b>Lsotype:</b>	IgG
<b>Purification:</b>	affinity purified by Protein A
<b>Storage Buffer:</b>	0.01M TBS(pH7.4) with 1% BSA, 0.03% Proclin300 and 50% Glycerol.
<b>Storage:</b>	Store at -20 °C for one year. Avoid repeated freeze/thaw cycles. The lyophilized antibody is stable at room temperature for at least one month and for greater than a year when kept at -20°C. When reconstituted in sterile pH 7.4 0.01M PBS or diluent of antibody the antibody is stable for at least two weeks at 2-4 °C.
<b>PubMed:</b>	<a href="#">PubMed</a>

LATS2 is a tumor suppressor which plays a critical role in centrosome duplication, maintenance of mitotic fidelity and genomic stability. Negatively regulates G1/S transition by down-regulating cyclin E/CDK2 kinase activity. Negative regulator of the androgen receptor.

**Subunit:**

Interacts with and is phosphorylated by AURKA. Binds to AR. Interacts with AJUBA during mitosis and this complex regulates organization of the spindle apparatus through recruitment of gamma-tubulin to the centrosome. Interacts (via PPxY motif) with YAP1 (via WW domains). Interacts with MOB1A and MOB1B. Interacts with LIMD1, WTIP and AJUBA.

**Subcellular Location:**

Cytoplasm, cytoskeleton, centrosome. Cytoplasm. Cytoplasm, cytoskeleton, spindle pole.

**Tissue Specificity:**

Expressed at high levels in heart and skeletal muscle and at lower levels in all other tissues examined.

**Similarity:**

Belongs to the protein kinase superfamily. AGC Ser/Thr protein kinase family. Contains 1 AGC-kinase C-terminal domain. Contains 1 protein kinase domain. Contains 1 UBA domain.

**SWISS:**

Q9NRM7

**Gene ID:**

26524

**Database links:**

[Entrez Gene: 26524](#) Human

[Entrez Gene: 50523](#) Mouse

[Entrez Gene: 305922](#) Rat

[Omim: 604861](#) Human

[SwissProt: Q9NRM7](#) Human

[SwissProt: Q7TSJ6](#) Mouse

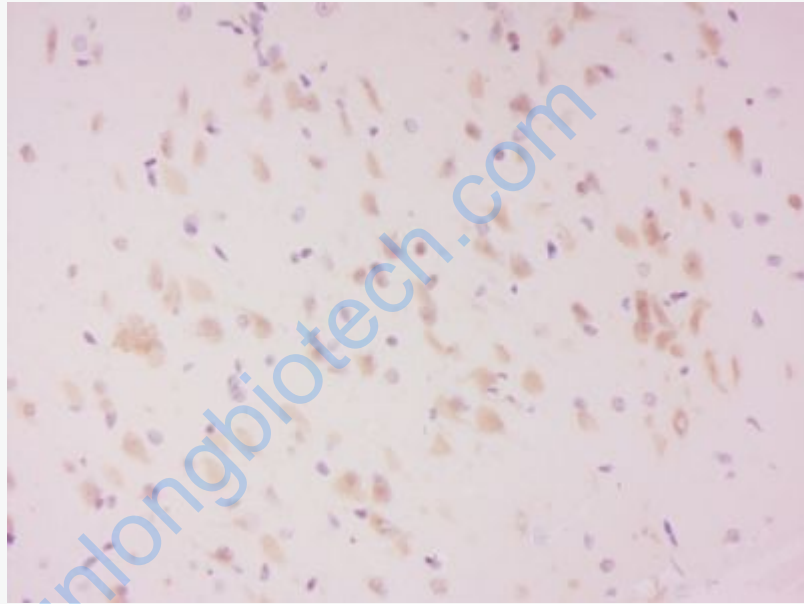
**Product Detail:**

[Unigene: 78960](#) Human

[Unigene: 347899](#) Mouse

**Important Note:**

This product as supplied is intended for research use only, not for use in human, therapeutic or diagnostic applications.



**Picture:**

Tissue/cell: Rat brain tissue; 4% Paraformaldehyde-fixed and paraffin-embedded;

Antigen retrieval: citrate buffer ( 0.01M, pH 6.0 ), Boiling bathing for 15min; Block endogenous peroxidase by 3% Hydrogen peroxide for 30min; Blocking buffer (normal goat serum,C-0005) at 37°C for 20 min;

Incubation: Anti-phospho-LATS2 (Ser83) Polyclonal Antibody,

Unconjugated(SL4082R) 1:200, overnight at 4°C, followed by conjugation to the secondary antibody(SP-0023) and DAB(C-0010) staining