



Rabbit Anti-Myoglobin antibody

SL41107R

Product Name:	Myoglobin
Chinese Name:	肌红蛋白抗体
Alias:	MYO; MB; MGC13548; PVALB; MYG HUMAN.
Organism Species:	Rabbit
Clonality:	Polyclonal
React Species:	Human,Mouse,Rat,
Applications:	WB=1:500-2000ELISA=1:500-1000IHC-P=1:400-800IHC-F=1:400-800ICC=1:100-500IF=1:100-500 (Paraffin sections need antigen repair) not yet tested in other applications. optimal dilutions/concentrations should be determined by the end user.
Molecular weight:	17kDa
Cellular localization:	cytoplasmic
Form:	Lyophilized or Liquid
Concentration:	1mg/ml
immunogen:	Purified Human Myoglobin (Natural Human Myoglobin protein):
Lsotype:	IgG
Purification:	affinity purified by Protein A
Storage Buffer:	0.01M TBS(pH7.4) with 1% BSA, 0.03% Proclin300 and 50% Glycerol.
Storage:	Store at -20 °C for one year. Avoid repeated freeze/thaw cycles. The lyophilized antibody is stable at room temperature for at least one month and for greater than a year when kept at -20°C. When reconstituted in sterile pH 7.4 0.01M PBS or diluent of antibody the antibody is stable for at least two weeks at 2-4 °C.
PubMed:	PubMed
Product Detail:	Myoglobin is a small heme containing protein responsible for the oxygen deposition in muscle tissues. Only one form of myoglobin is expressed in cardiac and skeletal muscles. Myoglobin is known as a marker of myocardial damage and it has been used for more than three decades. Nowadays it still is very commonly used in clinical practice as an early marker of AMI. It appears in patient's blood 1 to 3 hours after onset of the symptoms, reaching peak level within 8 to 12 hours. Myoglobin is not so cardiac specific as cTnI or cTnT. Because of high myoglobin concentration in skeletal muscle

tissue, even minor skeletal muscle injury results in the significant increase of myoglobin concentration in blood. Thus myoglobin is used together with cTnI or cTnT in clinical practise for better specificity in AMI diagnosis.

Function:

Serves as a reserve supply of oxygen and facilitates the movement of oxygen within muscles.

Similarity:

Belongs to the globin family.

SWISS:

P02144

Gene ID:

4151

Database links:

[Entrez Gene: 4151](#)Human

[Entrez Gene: 17189](#)Mouse

[Entrez Gene: 59108](#)Rat

[Oimim: 160000](#)Human

[SwissProt: P02144](#)Human

[SwissProt: P04247](#)Mouse

[SwissProt: Q9QZ76](#)Rat

[Unigene: 517586](#)Human

[Unigene: 404074](#)Mouse

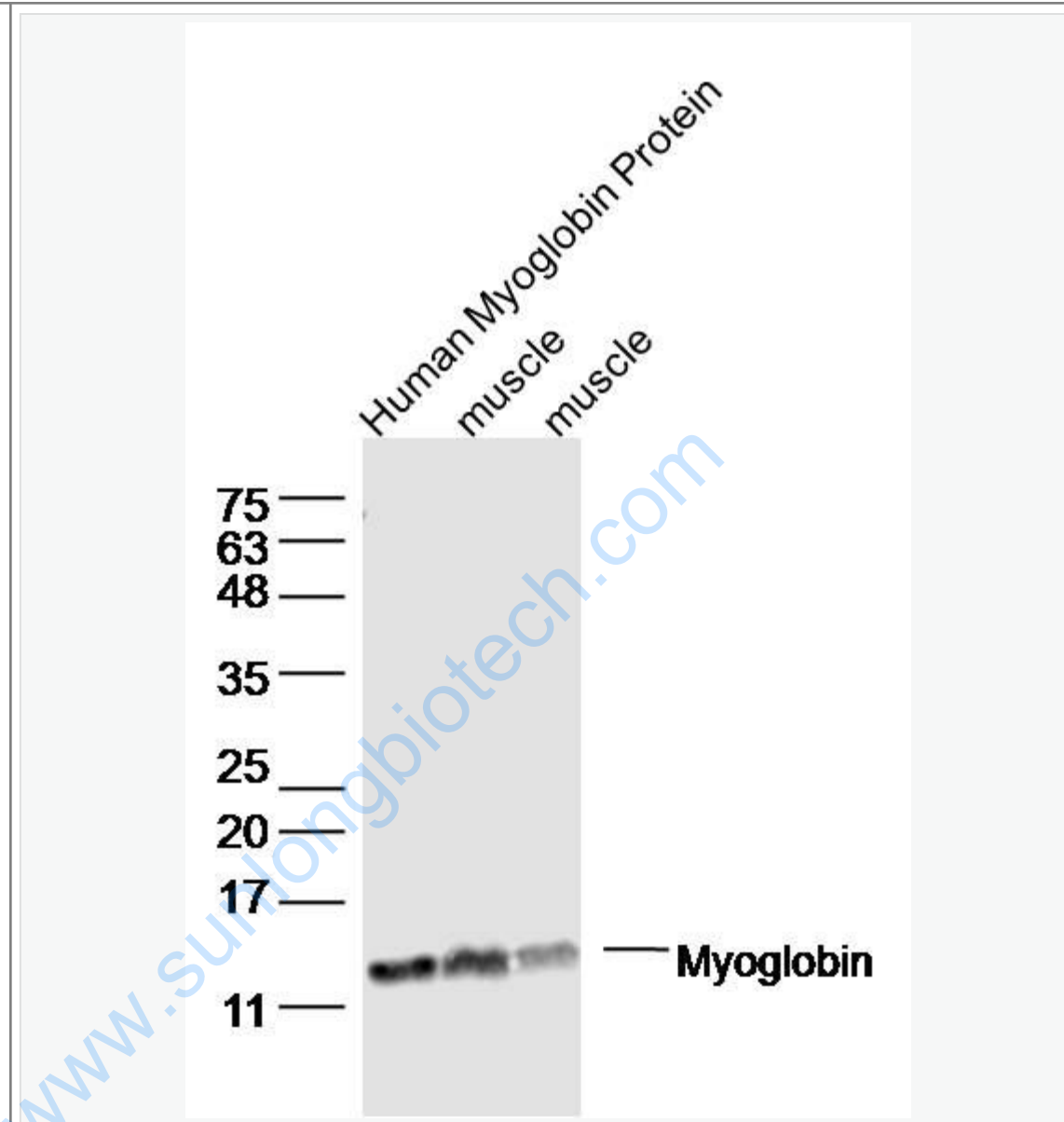
[Unigene: 40511](#)Rat

Important Note:

This product as supplied is intended for research use only, not for use in human, therapeutic or diagnostic applications.

肌红蛋白存在于肌肉中，心肌中含量特别丰富，，有较高的组织特异性，是横纹肌的特异性标记物，但对Tumour的敏感性较差。主要用于横纹肌Tumour的诊断与鉴别诊断。少数恶性中胚叶混合瘤、睾丸畸胎瘤、肾母细胞瘤亦可见阳性表达。

Picture:



Sample:

Human Myoglobin Protein at 100 ng

Muscle (Mouse) Lysate at 30 ug

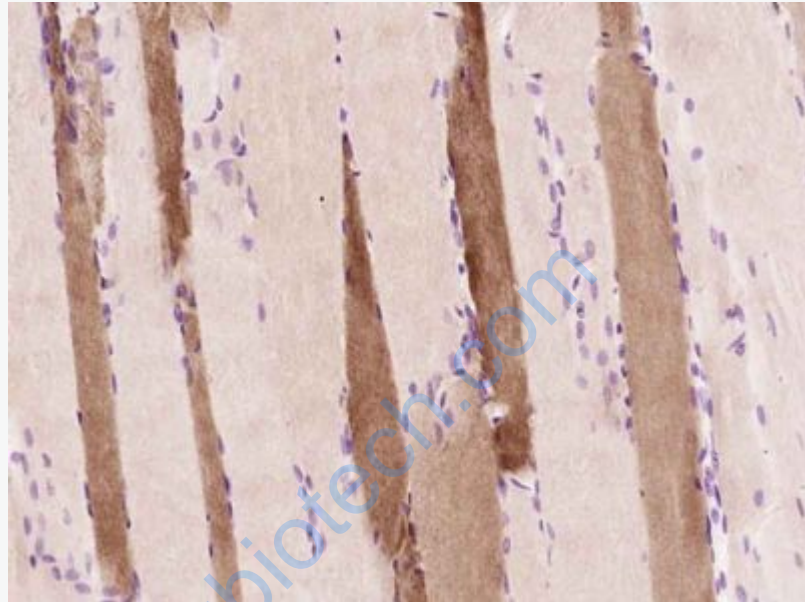
Muscle (Rat) Lysate at 20 ug

Primary: Anti-Myoglobin (SL41107R) at 1/300 dilution

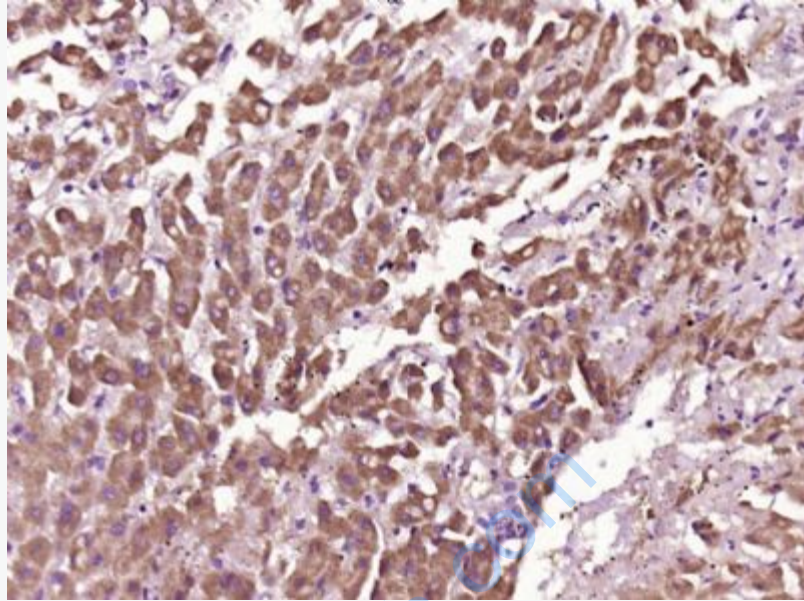
Secondary: IRDye800CW Goat Anti-Rabbit IgG at 1/20000 dilution

Predicted band size: 17 kD

Observed band size: 14 kD



Paraformaldehyde-fixed, paraffin embedded (Rat skeletal muscle); Antigen retrieval by boiling in sodium citrate buffer (pH6.0) for 15min; Block endogenous peroxidase by 3% hydrogen peroxide for 20 minutes; Blocking buffer (normal goat serum) at 37°C for 30min; Antibody incubation with (Myoglobin) Polyclonal Antibody, Unconjugated (SL41107R) at 1:400 overnight at 4°C, followed by operating according to SP Kit(Rabbit) (sp-0023) instructions and DAB staining.



Paraformaldehyde-fixed, paraffin embedded (Human liver carcinoma); Antigen retrieval by boiling in sodium citrate buffer (pH6.0) for 15min; Block endogenous peroxidase by 3% hydrogen peroxide for 20 minutes; Blocking buffer (normal goat serum) at 37°C for 30min; Antibody incubation with (Myoglobin) Polyclonal Antibody, Unconjugated (SL41107R) at 1:500 overnight at 4°C, followed by a conjugated secondary (sp-0023) for 20 minutes and DAB staining.