



Rabbit Anti-MAX protein antibody

SL4122R

Product Name:	MAX protein
Chinese Name:	Myc基因相关X因子抗体
Alias:	bHLHd4; bHLHd5; bHLHd6; bHLHd7; bHLHd8; Helix loop helix zipper protein; MAX protein; MGC10775; MGC11225; MGC18164; MGC34679; MGC36767; Myc associated factor X; Myc binding novel HLH/LZ protein; Orf 1; Orf1; Protein max; MAX HUMAN.
Organism Species:	Rabbit
Clonality:	Polyclonal
React Species:	Human,Mouse,Rat,Chicken,Cow,Horse,Rabbit,
Applications:	ELISA=1:500-1000IHC-P=1:400-800IHC-F=1:400-800IF=1:100-500 (Paraffin sections need antigen repair) not yet tested in other applications. optimal dilutions/concentrations should be determined by the end user.
Molecular weight:	18kDa
Cellular localization:	The nucleus
Form:	Lyophilized or Liquid
Concentration:	1mg/ml
immunogen:	KLH conjugated synthetic peptide derived from human MAX protein:75-160/160
Lsotype:	IgG
Purification:	affinity purified by Protein A
Storage Buffer:	0.01M TBS(pH7.4) with 1% BSA, 0.03% Proclin300 and 50% Glycerol.
Storage:	Store at -20 °C for one year. Avoid repeated freeze/thaw cycles. The lyophilized antibody is stable at room temperature for at least one month and for greater than a year when kept at -20°C. When reconstituted in sterile pH 7.4 0.01M PBS or diluent of antibody the antibody is stable for at least two weeks at 2-4 °C.
PubMed:	PubMed
Product Detail:	MAX is a basic helix-loop-helix, leucine zipper protein that forms heterodimers with MYC and MAD. It is involved in regulating gene expression. Function:

Transcription regulator. Forms a sequence-specific DNA-binding protein complex with MYC or MAD which recognizes the core sequence 5'-CAC[GA]TG-3'. The MYC-MAX complex is a transcriptional activator, whereas the MAD-MAX complex is a repressor. May repress transcription via the recruitment of a chromatin remodeling complex containing H3 'Lys-9' histone methyltransferase activity.

Subunit:

Efficient DNA binding requires dimerization with another bHLH protein. Binds DNA as a heterodimer with MYC or MAD. Part of the E2F6.com-1 complex in G0 phase composed of E2F6, MGA, MAX, TFDP1, CBX3, BAT8, EUHMTASE1, RING1, RNF2, MBLR, L3MBTL2 and YAF2. Component of some MLL1/MLL complex, at least composed of the core components MLL, ASH2L, HCFC1/HCF1, WDR5 and RBBP5, as well as the facultative components C17orf49, CHD8, E2F6, HSP70, INO80C, KANSL1, LAS1L, MAX, MCRS1, MGA, KAT8/MOF, PELP1, PHF20, PRP31, RING2, RUVB1/TIP49A, RUVB2/TIP49B, SENP3, TAF1, TAF4, TAF6, TAF7, TAF9 and TEX10. Interacts with SPAG9.

Subcellular Location:

Nucleus.

Tissue Specificity:

High levels found in the brain, heart and lung while lower levels are seen in the liver, kidney and skeletal muscle.

Post-translational modifications:

Reversible lysine acetylation might regulate the nuclear-cytoplasmic shuttling of specific Max complexes.

Similarity:

Belongs to the MAX family.
Contains 1 bHLH (basic helix-loop-helix) domain.

SWISS:

P61244

Gene ID:

4149

Database links:

[Entrez Gene: 4149](#)Human

[Entrez Gene: 17187](#)Mouse

[Entrez Gene: 60661](#)Rat

[Omim: 154950](#)Human

[SwissProt: P52162](#)Chicken

[SwissProt: P61244](#)Human

[SwissProt: P28574](#)Mouse

[SwissProt: P52164](#)Rat

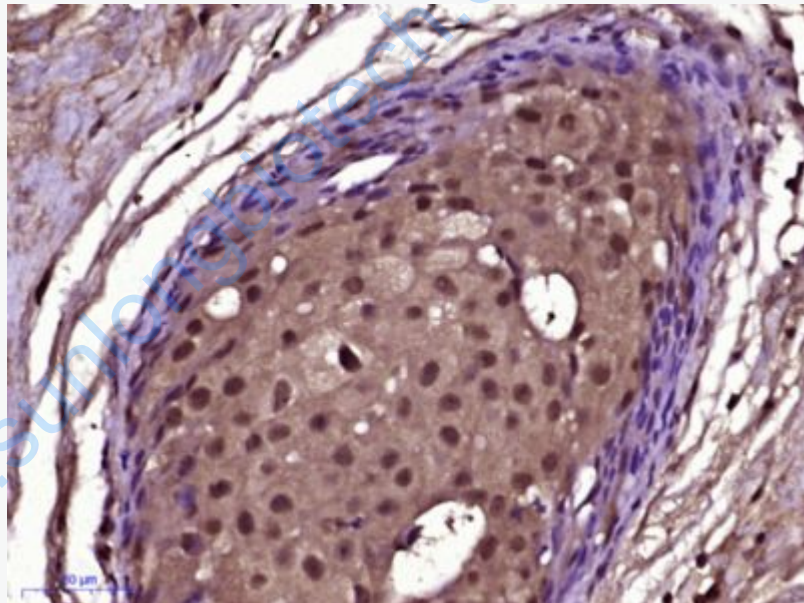
[Unigene: 285354](#)Human

[Unigene: 4210](#)Rat

Important Note:

This product as supplied is intended for research use only, not for use in human, therapeutic or diagnostic applications.

Picture:



Paraformaldehyde-fixed, paraffin embedded (Human breast carcinoma); Antigen retrieval by boiling in sodium citrate buffer (pH6.0) for 15min; Block endogenous peroxidase by 3% hydrogen peroxide for 20 minutes; Blocking buffer (normal goat serum) at 37°C for 30min; Antibody incubation with (MAX protein) Polyclonal Antibody, Unconjugated (SL4122R) at 1:400 overnight at 4°C, followed by

	operating according to SP Kit(Rabbit) (sp-0023) instructions and DAB staining.
--	--

www.sunlongbiotech.com