



Rabbit Anti-MAP4K1 antibody

SL4134R

Product Name:	MAP4K1
Chinese Name:	造血祖细胞激酶1抗体
Alias:	Hematopoietic progenitor kinase 1; Hematopoietic progenitor kinase; HPK1; Human Hematopoietic Progenitor Kinase; M4K1_HUMAN; Map4k1; MAPK/ERK kinase kinase kinase 1; MEK kinase kinase 1; MEKKK 1; Mitogen Activated Protein Kinase Kinase Kinase Kinase 1; Mitogen-activated protein kinase kinase kinase 1.
Organism Species:	Rabbit
Clonality:	Polyclonal
React Species:	Human,Mouse,Rat,Cow,
Applications:	WB=1:500-2000ELISA=1:500-1000IHC-P=1:400-800IHC-F=1:400-800Flow-Cyt=1µg/TestIF=1:100-500 (Paraffin sections need antigen repair) not yet tested in other applications. optimal dilutions/concentrations should be determined by the end user.
Molecular weight:	91kDa
Cellular localization:	cytoplasmicThe cell membrane
Form:	Lyophilized or Liquid
Concentration:	1mg/ml
immunogen:	KLH conjugated synthetic peptide derived from human MAP4K1:231-330/833
Lsotype:	IgG
Purification:	affinity purified by Protein A
Storage Buffer:	0.01M TBS(pH7.4) with 1% BSA, 0.03% Proclin300 and 50% Glycerol.
Storage:	Store at -20 °C for one year. Avoid repeated freeze/thaw cycles. The lyophilized antibody is stable at room temperature for at least one month and for greater than a year when kept at -20°C. When reconstituted in sterile pH 7.4 0.01M PBS or diluent of antibody the antibody is stable for at least two weeks at 2-4 °C.
PubMed:	PubMed
Product Detail:	May play a role in the response to environmental stress. Appears to act upstream of the JUN N-terminal pathway. May play a role in hematopoietic lineage decisions and growth regulation.

Function:

May play a role in the response to environmental stress. Appears to act upstream of the JUN N-terminal pathway. May play a role in hematopoietic lineage decisions and growth regulation.

Subunit:

Interacts with MAP3K1.

Tissue Specificity:

Expressed primarily in hematopoietic organs, including bone marrow, spleen and thymus. Also expressed at very low levels in lung, kidney, mammary glands and small intestine.

Similarity:

Belongs to the protein kinase superfamily. STE Ser/Thr protein kinase family. STE20 subfamily.

Contains 1 CNH domain.

Contains 1 protein kinase domain.

SWISS:

Q92918

Gene ID:

11184

Database links:

[Entrez Gene: 11184](#)Human

[Entrez Gene: 26411](#)Mouse

[Entrez Gene: 100516374](#)Pig

[Entrez Gene: 292763](#)Rat

[Olim: 601983](#)Human

[SwissProt: Q92918](#)Human

[SwissProt: P70218](#)Mouse

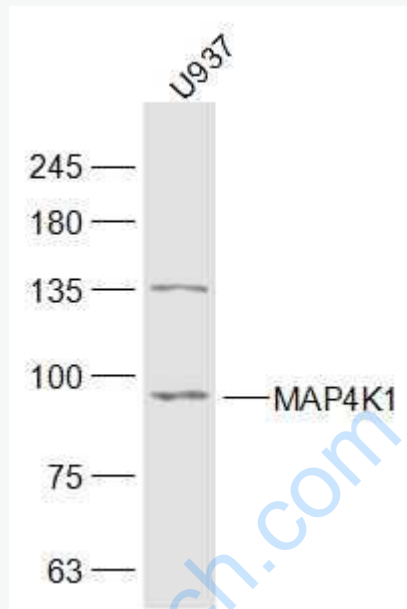
[Unigene: 95424](#)Human

[Unigene: 148278](#)Mouse

Important Note:

This product as supplied is intended for research use only, not for use in human, therapeutic or diagnostic applications.

Picture:



Sample:

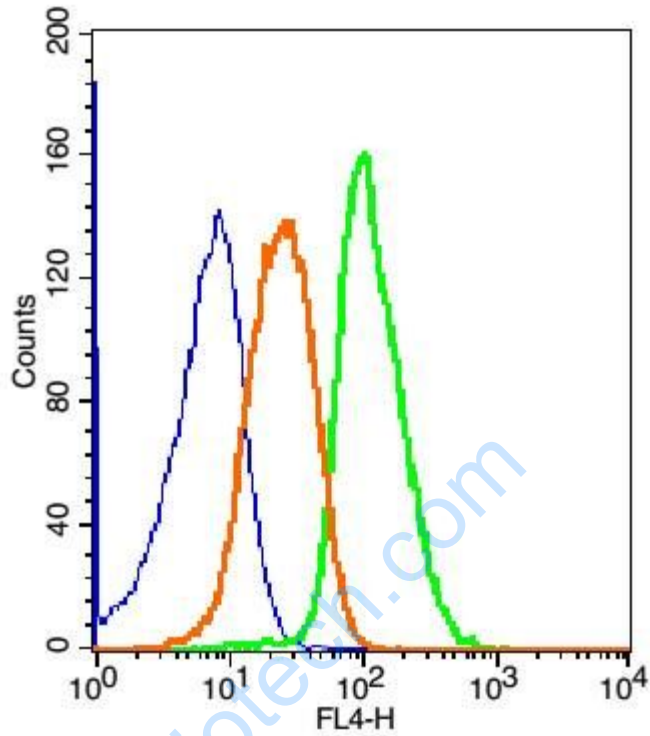
U937(Human) Cell Lysate at 30 ug

Primary: Anti-MAP4K1 (SL4134R) at 1/300 dilution

Secondary: IRDye800CW Goat Anti-Rabbit IgG at 1/20000 dilution

Predicted band size: 91 kD

Observed band size: 91 kD



Blank control: Hep G2 Cells(blue),fixed with 2% paraformaldehyde (10 min) and then permeabilized with ice-cold 90% methanol for 30 min on ice.

Primary Antibody: Rabbit Anti-MAP4K1/AF647 Conjugated antibody (SL4134R),

Dilution: 1 μ g in 100 μ L 1X PBS containing 0.5% BSA;

Isotype Control Antibody: Rabbit IgG/AF647(orange) ,used under the same conditions.