



Rabbit Anti-SYTL5 antibody

SL4145R

Product Name:	SYTL5
Chinese Name:	突触样蛋白5亚型2抗体
Alias:	synaptotagmin-like protein 5 isoform 2; synaptotagmin-like protein 5; SYTL5 protein; synaptotagmin-like 5; ENSMUSG00000054453; slp5; SYTL5.
Organism Species:	Rabbit
Clonality:	Polyclonal
React Species:	Human,Mouse,Rat,Dog,Pig,Cow,Horse,Rabbit,
Applications:	WB=1:500-2000ELISA=1:500-1000IHC-P=1:400-800IHC-F=1:400-800IF=1:100-500 (Paraffin sections need antigen repair) not yet tested in other applications. optimal dilutions/concentrations should be determined by the end user.
Molecular weight:	81kDa
Cellular localization:	The cell membrane
Form:	Lyophilized or Liquid
Concentration:	1mg/ml
immunogen:	KLH conjugated synthetic peptide derived from human SYTL5:801-921/921
Lsotype:	IgG
Purification:	affinity purified by Protein A
Storage Buffer:	0.01M TBS(pH7.4) with 1% BSA, 0.03% Proclin300 and 50% Glycerol.
Storage:	Store at -20 °C for one year. Avoid repeated freeze/thaw cycles. The lyophilized antibody is stable at room temperature for at least one month and for greater than a year when kept at -20°C. When reconstituted in sterile pH 7.4 0.01M PBS or diluent of antibody the antibody is stable for at least two weeks at 2-4 °C.
PubMed:	PubMed
Product Detail:	The protein encoded by this gene belongs to the synaptotagmin-like (Slp) protein family, which contains a unique homology domain at the N-terminus, referred to as the Slp homology domain (SHD). The SHD functions as a binding site for Rab27A, which plays a role in protein transport. Expression of this gene is restricted to placenta and liver, suggesting that it might be involved in Rab27A-dependent membrane trafficking in specific tissues. Alternatively spliced transcript variants encoding different isoforms

have been found for this gene.

Function:

May act as Rab effector protein and play a role in vesicle trafficking. Binds phospholipids.

Subcellular Location:

Membrane.

Tissue Specificity:

Highly expressed in placenta and liver.

Similarity:

Contains 2 C2 domains.

Contains 1 FYVE-type zinc finger.

Contains 1 RabBD (Rab-binding) domain.

SWISS:

Q8TDW5

Gene ID:

94122

Database links:

[Entrez Gene: 94122](#) Human

[Entrez Gene: 236643](#) Mouse

[Entrez Gene: 302538](#) Rat

[SwissProt: Q8TDW5](#) Human

[SwissProt: Q80T23](#) Mouse

[SwissProt: Q812E4](#) Rat

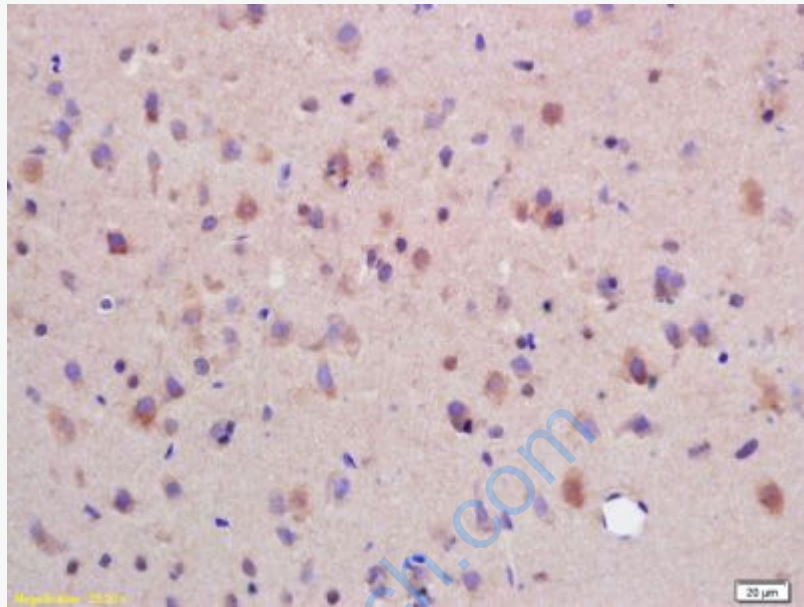
[Unigene: 662334](#) Human

[Unigene: 246606](#) Mouse

[Unigene: 92480](#) Rat

Important Note:

This product as supplied is intended for research use only, not for use in human, therapeutic or diagnostic applications.



Picture:

Tissue/cell: rat brain tissue;4% Paraformaldehyde-fixed and paraffin-embedded;
Antigen retrieval: citrate buffer (0.01M, pH 6.0), Boiling bathing for 15min;
Blocking buffer (normal goat serum,C-0005) at 37°C for 20 min;
Incubation: Anti-SYTL5 Polyclonal Antibody, Unconjugated(SL4145R) 1:200,
overnight at 4°C; The secondary antibody was Goat Anti-Rabbit IgG, Cy3
conjugated(SL4145R)used at 1:200 dilution for 40 minutes at 37°C.
DAPI(5ug/ml,blue,C-0033) was used to stain the cell nuclei