



Rabbit Anti-PRKD3 antibody

SL4157R

Product Name:	PRKD3
Chinese Name:	蛋白激酶C nu型抗体
Alias:	EPK 2; EPK2; EPK-2; nPKC nu; nPKCnu; nu; PKCnu; PKC nu; PKD 3; PKD3; PRK D3; PRKCN; PRKD 3; PRKD3; Protein kinase C; Protein kinase C nu; Protein kinase C nu type; Protein kinase D3; Protein kinase EPK 2; Protein kinase EPK2; Serine threonine protein kinase; Serine/threonine protein kinase D3.
Organism Species:	Rabbit
Clonality:	Polyclonal
React Species:	Human,Mouse,Rat,Chicken,Dog,Pig,Cow,Horse,Rabbit,Guinea Pig,
Applications:	WB=1:500-2000ELISA=1:500-1000IHC-P=1:400-800IHC-F=1:400-800IF=1:100-500 (Paraffin sections need antigen repair) not yet tested in other applications. optimal dilutions/concentrations should be determined by the end user.
Molecular weight:	100kDa
Cellular localization:	cytoplasmicThe cell membrane
Form:	Lyophilized or Liquid
Concentration:	1mg/ml
immunogen:	KLH conjugated synthetic peptide derived from human PRKD3:345-550/890
Lsotype:	IgG
Purification:	affinity purified by Protein A
Storage Buffer:	0.01M TBS(pH7.4) with 1% BSA, 0.03% Proclin300 and 50% Glycerol.
Storage:	Store at -20 °C for one year. Avoid repeated freeze/thaw cycles. The lyophilized antibody is stable at room temperature for at least one month and for greater than a year when kept at -20°C. When reconstituted in sterile pH 7.4 0.01M PBS or diluent of antibody the antibody is stable for at least two weeks at 2-4 °C.
PubMed:	PubMed
Product Detail:	Protein kinase C (PKC) is a family of serine and threonine specific protein kinases that can be activated by calcium and the second messenger diacylglycerol. PKC family members phosphorylate a wide variety of protein targets and are known to be involved in diverse cellular signaling pathways. PKC family members also serve as major

receptors for phorbol esters, a class of tumor promoters. Each member of the PKC family has a specific expression profile and is believed to play a distinct role. The protein encoded by this gene is one of the PKC family members. This kinase can be activated rapidly by the agonists of G protein coupled receptors. It resides in both cytoplasm and nucleus, and its nuclear accumulation is found to be dramatically enhanced in response to its activation. This kinase can also be activated after B cell antigen receptor (BCR) engagement, which requires intact phospholipase C gamma and the involvement of other PKC family members.

Function:

Converts transient diacylglycerol (DAG) signals into prolonged physiological effects, downstream of PKC. Involved in resistance to oxidative stress.

Subcellular Location:

Cytoplasm. Membrane. Note=Translocation to the cell membrane is required for kinase activation.

Tissue Specificity:

Ubiquitous.

Similarity:

Belongs to the protein kinase superfamily. CAMK Ser/Thr protein kinase family. PKD subfamily.

Contains 1 PH domain.

Contains 2 phorbol-ester/DAG-type zinc fingers.

Contains 1 protein kinase domain.

SWISS:

O94806

Gene ID:

23683

Database links:

[Entrez Gene: 23683](#) Human

[Entrez Gene: 538447](#) Cow

[Entrez Gene: 483036](#) Dog

[Entrez Gene: 75292](#) Mouse

[Entrez Gene: 313834](#) Rat

[Omim: 607077](#) Human

[SwissProt: O94806](#) Human

[SwissProt: Q8K1Y2](#) Mouse

[Unigene: 660757](#) Human

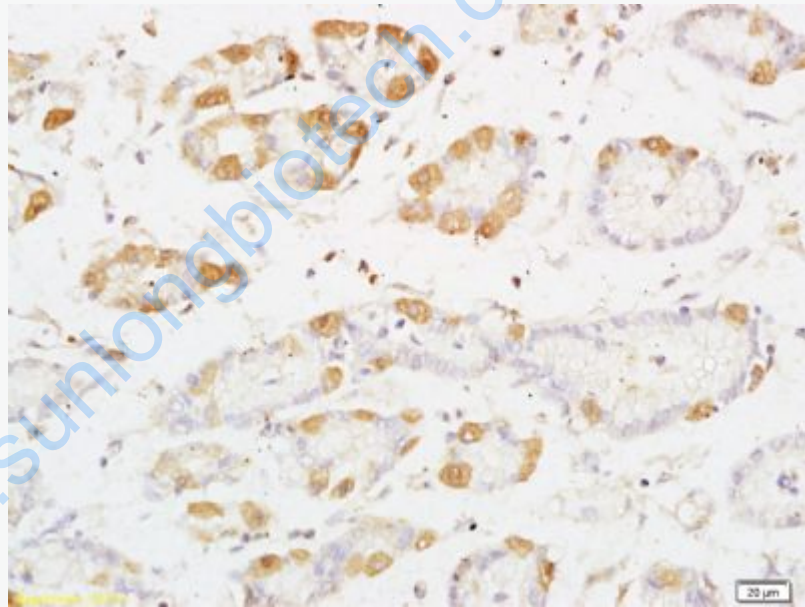
[Unigene: 716034](#) Human

[Unigene: 252776](#) Mouse

Important Note:

This product as supplied is intended for research use only, not for use in human, therapeutic or diagnostic applications.

Picture:



Tissue/cell: rat kidney tissue; 4% Paraformaldehyde-fixed and paraffin-embedded;
Antigen retrieval: citrate buffer (0.01M, pH 6.0), Boiling bathing for 15min; Block endogenous peroxidase by 3% Hydrogen peroxide for 30min; Blocking buffer (normal goat serum,C-0005) at 37°C for 20 min;
Incubation: Anti-PRKD3 Polyclonal Antibody, Unconjugated(SL4157R) 1:200, overnight at 4°C, followed by conjugation to the secondary antibody(SP-0023) and

	DAB(C-0010) staining
--	----------------------

www.sunlongbiotech.com