



Rabbit Anti-PI 3 Kinase Class 3 antibody

SL4159R

Product Name:	PI 3 Kinase Class 3
Chinese Name:	磷脂酰肌醇激酶3催化亚单位3抗体
Alias:	PI 3 Kinase Class 3; Phosphatidylinositol 3 kinase catalytic subunit type 3; Phosphatidylinositol 3 kinase class 3; Phosphatidylinositol 3 kinase p100 subunit; Phosphoinositide 3 kinase class 3; PI3 kinase type 3; PI3K type 3; PIK3C3; PtdIns 3 kinase type 3; Vps 34; Vps34; hVps34; MGC61518; PIK3C3; PI3 Kinase p100; PK3C3 HUMAN.
Organism Species:	Rabbit
Clonality:	Polyclonal
React Species:	Human,Mouse,Rat,Chicken,Dog,Pig,Cow,Horse,Rabbit,
Applications:	WB=1:500-2000ELISA=1:500-1000IHC-P=1:400-800IHC-F=1:400-800Flow-Cyt=3ug/TestIF=1:100-500 (Paraffin sections need antigen repair) not yet tested in other applications. optimal dilutions/concentrations should be determined by the end user.
Molecular weight:	98kDa
Cellular localization:	cytoplasmic
Form:	Lyophilized or Liquid
Concentration:	1mg/ml
immunogen:	KLH conjugated synthetic peptide derived from human PIK3C3/PI3 kinase type 3:301-400/887
Lsotype:	IgG
Purification:	affinity purified by Protein A
Storage Buffer:	0.01M TBS(pH7.4) with 1% BSA, 0.03% Proclin300 and 50% Glycerol.
Storage:	Store at -20 °C for one year. Avoid repeated freeze/thaw cycles. The lyophilized antibody is stable at room temperature for at least one month and for greater than a year when kept at -20°C. When reconstituted in sterile pH 7.4 0.01M PBS or diluent of antibody the antibody is stable for at least two weeks at 2-4 °C.
PubMed:	PubMed
Product Detail:	PI 3 Kinase Class 3 is a member of the PI3/PI4-kinase family. It is the catalytic subunit of the PI3K complex. It is involved in the transport of lysosomal enzyme precursors to

lysosomes. It is ubiquitously expressed, with a highest expression in skeletal muscle.

Function:

Catalytic subunit of the PI3K complex that mediates formation of phosphatidylinositol 3-phosphate which plays a key role in initiation and maturation of autophagosomes. Involved in the transport of lysosomal enzyme precursors to lysosomes. Required for the abscission step in cytokinesis. Required for transport from early to late endosomes.

Subunit:

Heterodimer. This subunit, part of a complex composed of regulatory and catalytic subunits, associates with regulatory subunit PIK3R4. Forms a complex with BECN1, PIK3R4 and either UVRAG and KIAA0226/Rubicon, or with ATG14. In this complex, presence of UVRAG and ATG14 are mutually exclusive. Part of a complex composed of PIK3R4 and PIK3CB (By similarity). Interacts with RAB7A in the presence of PIK3R4.

Subcellular Location:

Midbody. Late endosome.

Tissue Specificity:

Ubiquitously expressed, with a highest expression in skeletal muscle.

Similarity:

Belongs to the PI3/PI4-kinase family.
Contains 1 C2 PI3K-type domain.
Contains 1 PI3K/PI4K domain.
Contains 1 PIK helical domain.

SWISS:

Q8NEB9

Gene ID:

5289

Database links:

[Entrez Gene: 5289](#) Human

[Entrez Gene: 225326](#) Mouse

[Entrez Gene: 65052](#) Rat

[Omim: 602609](#) Human

[SwissProt: Q8NEB9](#) Human

[SwissProt: Q6PF93](#) Mouse

[SwissProt: O88763](#) Rat

[Unigene: 464971](#) Human

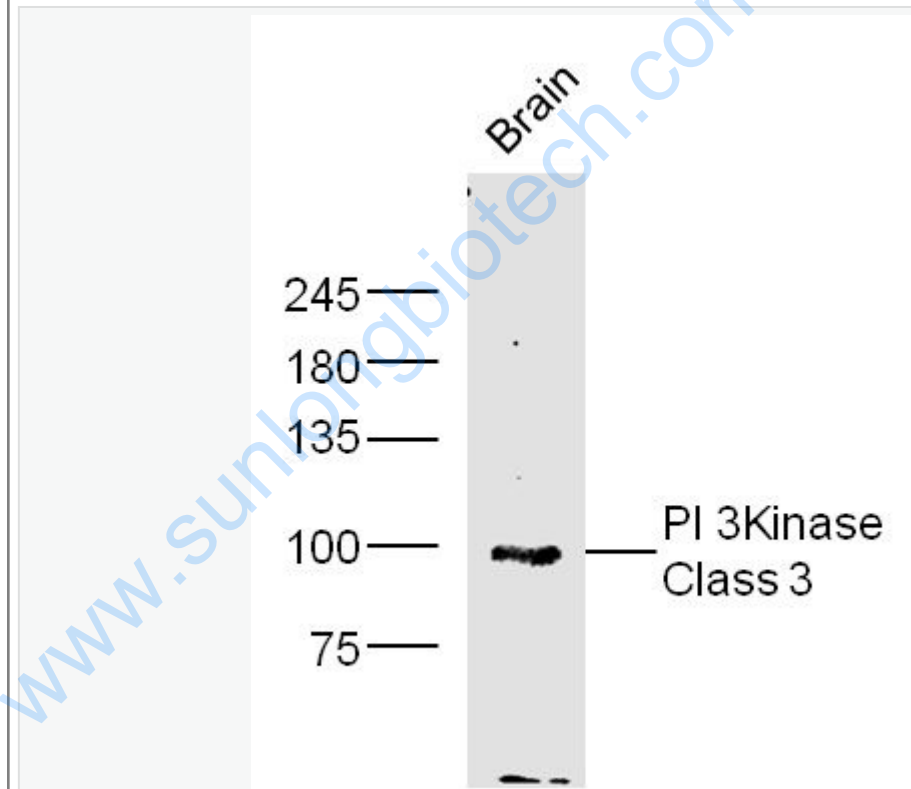
[Unigene: 194127](#) Mouse

[Unigene: 30010](#) Rat

Important Note:

This product as supplied is intended for research use only, not for use in human, therapeutic or diagnostic applications.

Picture:



Sample:

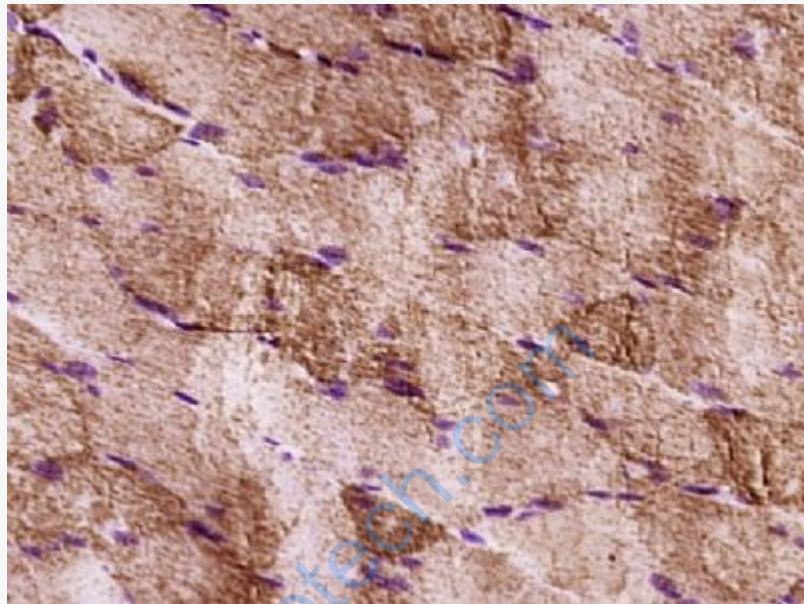
brain(mouse) Lysate at 40 ug

Primary: Anti-PI 3 Kinase Class 3 (SL4159R) at 1/300 dilution

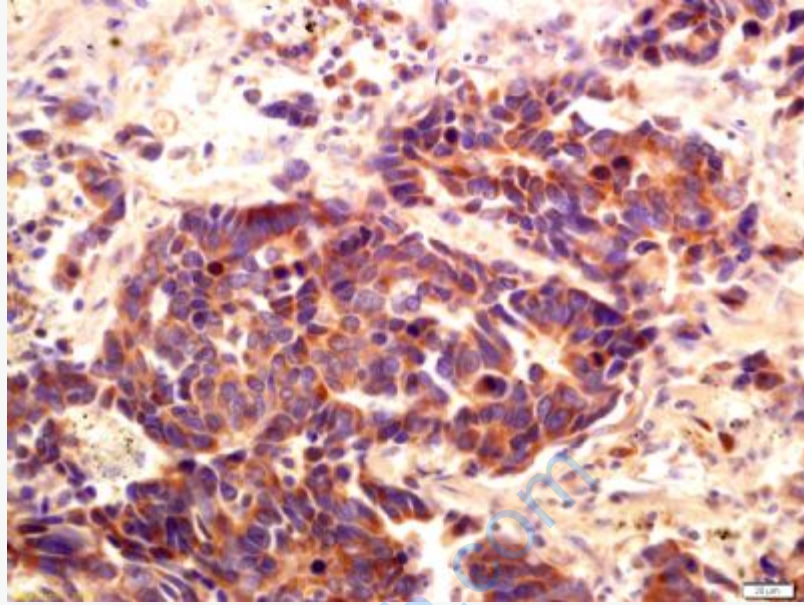
Secondary: IRDye800CW Goat Anti-Rabbit IgG at 1/20000 dilution

Predicted band size: 98kD

Observed band size: 98 kD



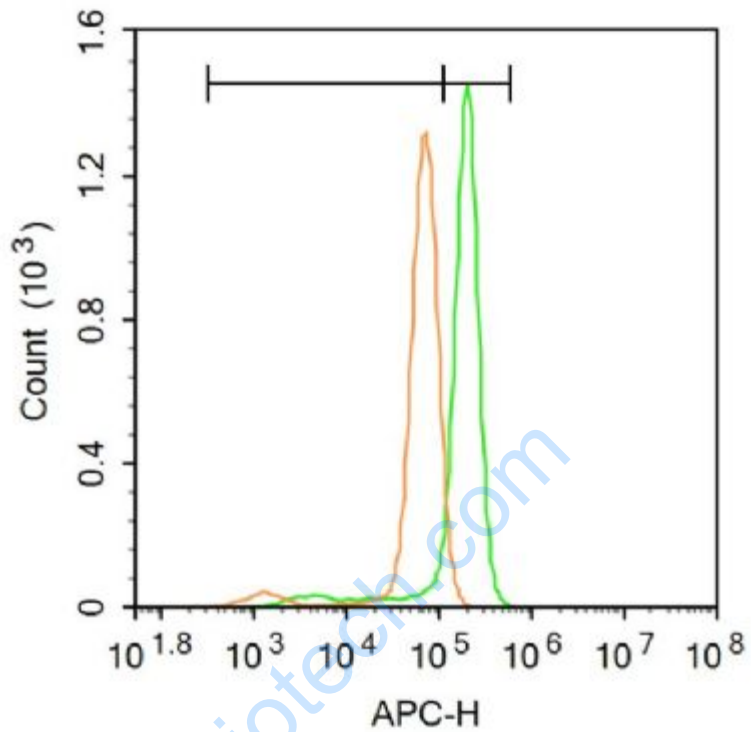
Paraformaldehyde-fixed, paraffin embedded (Rat skeletal muscle); Antigen retrieval by boiling in sodium citrate buffer (pH6.0) for 15min; Block endogenous peroxidase by 3% hydrogen peroxide for 20 minutes; Blocking buffer (normal goat serum) at 37°C for 30min; Antibody incubation with (PI 3 Kinase Class 3) Polyclonal Antibody, Unconjugated (SL4159R) at 1:400 overnight at 4°C, followed by operating according to SP Kit(Rabbit) (sp-0023) instructions and DAB staining.



Tissue/cell: human lung carcinoma; 4% Paraformaldehyde-fixed and paraffin-embedded;

Antigen retrieval: citrate buffer (0.01M, pH 6.0), Boiling bathing for 15min; Block endogenous peroxidase by 3% Hydrogen peroxide for 30min; Blocking buffer (normal goat serum,C-0005) at 37°C for 20 min;

Incubation: Anti-PI 3 Kinase Class 3 Polyclonal Antibody, Unconjugated(SL4159R) 1:200, overnight at 4°C, followed by conjugation to the secondary antibody(SP-0023) and DAB(C-0010) staining



Blank control (Black line): HUVEC (Black).

Primary Antibody (green line): Rabbit Anti-PI 3 Kinase Class 3 antibody (SL4159R)

Dilution: $1\mu\text{g} / 10^6$ cells;

Isotype Control Antibody (orange line): Rabbit IgG .

Secondary Antibody (white blue line): Goat anti-rabbit IgG-AF647

Dilution: $1\mu\text{g} / \text{test}$.

Protocol

The cells were fixed with 4% PFA (10min at room temperature) and then permeabilized with 20% PBST for 20 min at room temperature. The cells were then incubated in 5% BSA to block non-specific protein-protein interactions for 30 min at room temperature. Cells stained with Primary Antibody for 30 min at room temperature. The secondary antibody used for 40 min at room temperature.

	Acquisition of 20,000 events was performed.
--	---

www.sunlongbiotech.com