



Rabbit Anti-SGPL1 antibody

SL4188R

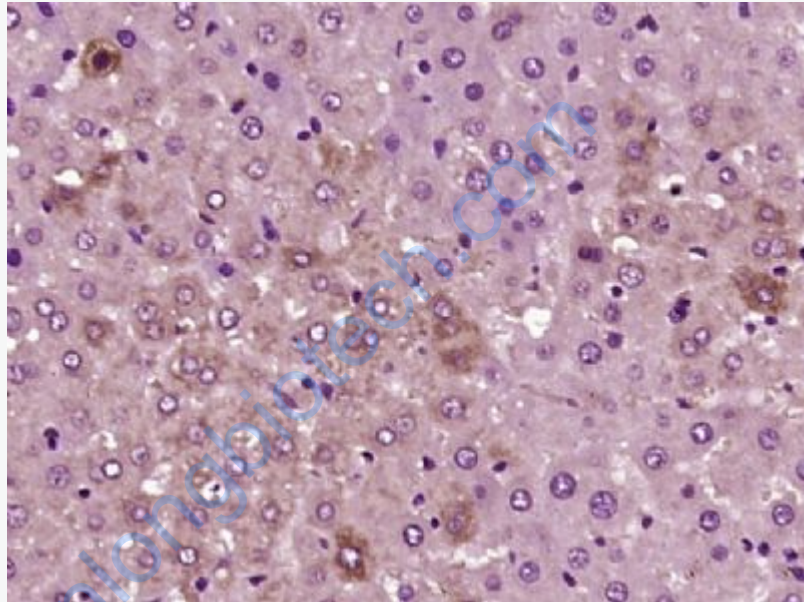
Product Name:	SGPL1
Chinese Name:	磷酸鞘氨醇裂解酶1抗体
Alias:	FLJ13811; hSPL; KIAA1252; S1P; S1PL; SGPL 1; SGPL1; SGPL1_HUMAN; SP lyase; SP-lyase 1; Sphingosine 1 phosphate aldolase; Sphingosine 1 phosphate lyase 1; Sphingosine-1-phosphate aldolase; Sphingosine-1-phosphate lyase 1; SPL 1; SPL.
文献引用 PubMed :	Specific References(1) SL4188R has been referenced in 1 publications. [IF=11.47] Choi, Won Hoon, et al. "Open-gate mutants of the mammalian proteasome show enhanced ubiquitin-conjugate degradation." Nature Communications 7 (2016). WB;Human. PubMed:26957043
Organism Species:	Rabbit
Clonality:	Polyclonal
React Species:	Human,Mouse,Rat,Dog,Pig,Cow,Horse,Rabbit,
Applications:	ELISA=1:500-1000IHC-P=1:400-800IHC-F=1:400-800Flow-Cyt=1ug/testIF=1:100-500 (Paraffin sections need antigen repair) not yet tested in other applications. optimal dilutions/concentrations should be determined by the end user.
Molecular weight:	63kDa
Cellular localization:	cytoplasmic
Form:	Lyophilized or Liquid
Concentration:	1mg/ml
immunogen:	KLH conjugated synthetic peptide derived from human SGPL1:301-400/568
Lsotype:	IgG
Purification:	affinity purified by Protein A
Storage Buffer:	0.01M TBS(pH7.4) with 1% BSA, 0.03% Proclin300 and 50% Glycerol.
Storage:	Store at -20 °C for one year. Avoid repeated freeze/thaw cycles. The lyophilized antibody is stable at room temperature for at least one month and for greater than a year

	when kept at -20°C. When reconstituted in sterile pH 7.4 0.01M PBS or diluent of antibody the antibody is stable for at least two weeks at 2-4 °C.
PubMed:	PubMed
Product Detail:	<p>Cleaves phosphorylated sphingoid bases (PSBs), such as sphingosine-1-phosphate, into fatty aldehydes and phosphoethanolamine. Elevates stress-induced ceramide production and apoptosis.</p> <p>Function: Cleaves phosphorylated sphingoid bases (PSBs), such as sphingosine-1-phosphate, into fatty aldehydes and phosphoethanolamine. Elevates stress-induced ceramide production and apoptosis.</p> <p>Subcellular Location: Endoplasmic reticulum membrane; Single-pass type III membrane protein.</p> <p>Tissue Specificity: Found in liver and kidney.</p> <p>Similarity: Belongs to the group II decarboxylase family. Sphingosine-1-phosphate lyase subfamily.</p> <p>SWISS: O95470</p> <p>Gene ID: 8879</p> <p>Database links:</p> <p>Entrez Gene: 8879Human</p> <p>Entrez Gene: 20397Mouse</p> <p>Entrez Gene: 286896Rat</p> <p>SwissProt: O95470Human</p> <p>SwissProt: Q8R0X7Mouse</p> <p>SwissProt: Q8CHN6Rat</p> <p>Unigene: 499984Human</p> <p>Unigene: 412319Mouse</p> <p>Unigene: 431862Mouse</p> <p>Unigene: 26953Rat</p>

[Ovim: 603729](#)Human

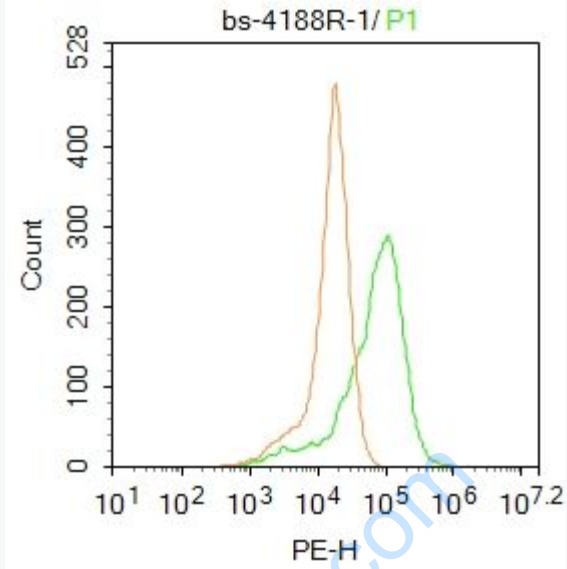
Important Note:

This product as supplied is intended for research use only, not for use in human, therapeutic or diagnostic applications.



Picture:

Paraformaldehyde-fixed, paraffin embedded (Rat liver); Antigen retrieval by boiling in sodium citrate buffer (pH6.0) for 15min; Block endogenous peroxidase by 3% hydrogen peroxide for 20 minutes; Blocking buffer (normal goat serum) at 37°C for 30min; Antibody incubation with (SGPL1) Polyclonal Antibody, Unconjugated (SL4188R) at 1:400 overnight at 4°C, followed by operating according to SP Kit(Rabbit) (sp-0023) instructions and DAB staining.



Blank control: A549.

Primary Antibody (green line): Rabbit Anti-SGPL1 antibody (SL4188R)

Dilution: $1\mu\text{g} / 10^6$ cells;

Isotype Control Antibody (orange line): Rabbit IgG .

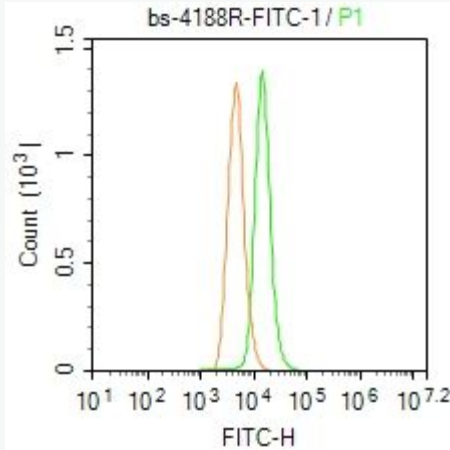
Secondary Antibody : Goat anti-rabbit IgG-PE

Dilution: $1\mu\text{g} / \text{test}$.

Protocol

The cells were fixed with 4% PFA (10min at room temperature)and then permeabilized with PBST for 20 min at room temperature. The cells were then incubated in 5%BSA to block non-specific protein-protein interactions for 30 min at room temperature .Cells stained with Primary Antibody for 30 min at room temperature. The secondary antibody used for 40 min at room temperature.

Acquisition of 20,000 events was performed.



Blank control: A549.

Primary Antibody (green line): Rabbit Anti-SGPL1/FITC Conjugated antibody (SL4188R)

Dilution: 1µg /10⁶ cells;

Isotype Control Antibody (orange line): Rabbit IgG-FITC .

Protocol

The cells were fixed with 4% PFA (10min at room temperature) and then permeabilized with 0.1% PBST for 20 min at -20°C. The cells were then incubated in 5% BSA to block non-specific protein-protein interactions for 30 min at room temperature. The cells were stained with Primary Antibody for 30 min at room temperature. Acquisition of 20,000 events was performed.