



## Rabbit Anti-Squalene Epoxidase antibody

SL4218R

<b>Product Name:</b>	Squalene Epoxidase
<b>Chinese Name:</b>	鲨烯环氧酶抗体
<b>Alias:</b>	ERG1; SE antibody SQLE; Squalene monooxygenase; ERG1_HUMAN.
<b>Organism Species:</b>	Rabbit
<b>Clonality:</b>	Polyclonal
<b>React Species:</b>	Human,Mouse,Rat,Chicken,Dog,Pig,Cow,Horse,Rabbit,
<b>Applications:</b>	WB=1:500-2000ELISA=1:500-1000IHC-P=1:400-800IHC-F=1:400-800IF=1:100-500 (Paraffin sections need antigen repair) not yet tested in other applications. optimal dilutions/concentrations should be determined by the end user.
<b>Molecular weight:</b>	64kDa
<b>Cellular localization:</b>	cytoplasmicThe cell membrane
<b>Form:</b>	Lyophilized or Liquid
<b>Concentration:</b>	1mg/ml
<b>immunogen:</b>	KLH conjugated synthetic peptide derived from human Squalene Epoxidase:101-200/574
<b>Lsotype:</b>	IgG
<b>Purification:</b>	affinity purified by Protein A
<b>Storage Buffer:</b>	0.01M TBS(pH7.4) with 1% BSA, 0.03% Proclin300 and 50% Glycerol.
<b>Storage:</b>	Store at -20 °C for one year. Avoid repeated freeze/thaw cycles. The lyophilized antibody is stable at room temperature for at least one month and for greater than a year when kept at -20°C. When reconstituted in sterile pH 7.4 0.01M PBS or diluent of antibody the antibody is stable for at least two weeks at 2-4 °C.
<b>PubMed:</b>	<a href="#">PubMed</a>
<b>Product Detail:</b>	<p>This protein catalyzes the first oxygenation step in sterol biosynthesis and is suggested to be one of the rate-limiting enzymes in this pathway.</p> <p><b>Function:</b> Catalyzes the first oxygenation step in sterol biosynthesis and is suggested to be one of the rate-limiting enzymes in this pathway.</p>

**Subunit:**

May form a complex with squalene synthase.

**Subcellular Location:**

Microsome membrane; Multi-pass membrane protein. Endoplasmic reticulum membrane; Multi-pass membrane protein.

**Similarity:**

Belongs to the squalene monooxygenase family.

**SWISS:**

Q14534

**Gene ID:**

6713

**Database links:**

[Entrez Gene: 6713](#)Human

[Entrez Gene: 20775](#)Mouse

[Entrez Gene: 29230](#)Rat

[Omim: 602019](#)Human

[SwissProt: Q14534](#)Human

[SwissProt: P52019](#)Mouse

[SwissProt: P52020](#)Rat

[Unigene: 71465](#)Human

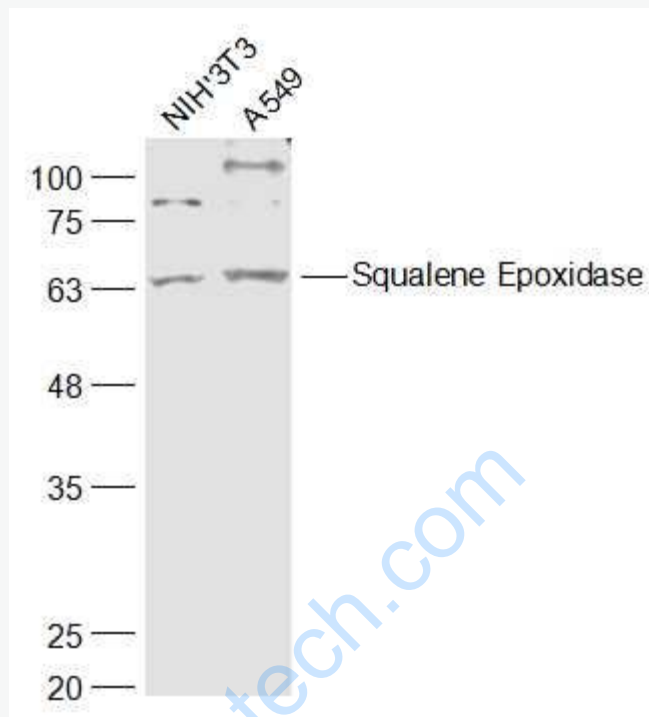
[Unigene: 296169](#)Mouse

[Unigene: 33239](#)Rat

**Important Note:**

This product as supplied is intended for research use only, not for use in human, therapeutic or diagnostic applications.

Picture:



Sample:

NIH/3T3(Mouse) Cell Lysate at 30 ug

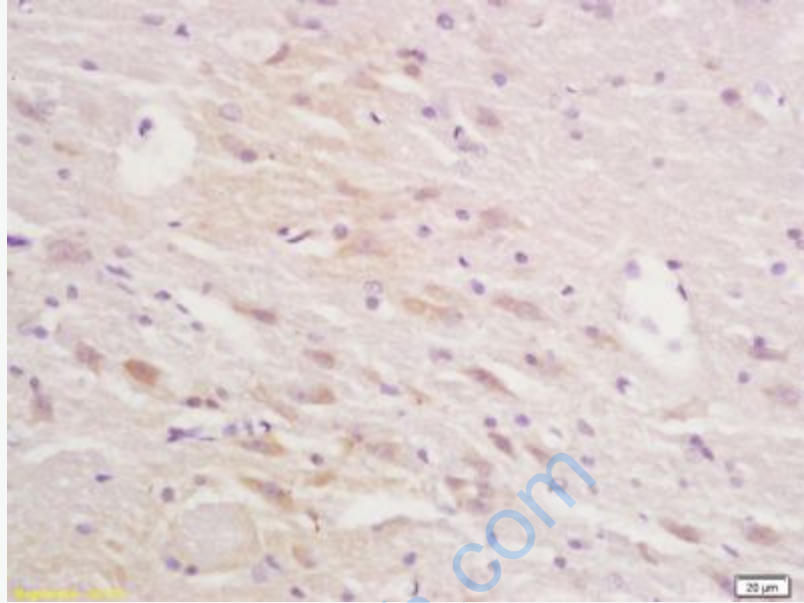
A549(Human) Cell Lysate at 30 ug

Primary: Anti-Squalene Epoxidase (SL4218R) at 1/1000 dilution

Secondary: IRDye800CW Goat Anti-Rabbit IgG at 1/20000 dilution

Predicted band size: 64 kD

Observed band size: 64 kD



Tissue/cell: rat brain tissue; 4% Paraformaldehyde-fixed and paraffin-embedded;  
Antigen retrieval: citrate buffer ( 0.01M, pH 6.0 ), Boiling bathing for 15min; Block endogenous peroxidase by 3% Hydrogen peroxide for 30min; Blocking buffer (normal goat serum,C-0005) at 37°C for 20 min;  
Incubation: Anti-Squalene Epoxidase Polyclonal Antibody, Unconjugated(SL4218R) 1:200, overnight at 4°C, followed by conjugation to the secondary antibody(SP-0023) and DAB(C-0010) staining