



Rabbit Anti-TM7SF2 antibody

SL4221R

| | |
|-------------------------------|---|
| Product Name: | TM7SF2 |
| Chinese Name: | 脱氢胆固醇还原酶14抗体 |
| Alias: | ANG1; Another new gene 1 protein; DHCR14A; C 14 sterol reductase; C-14 sterol reductase; Delta 14 SR; Delta(14) sterol reductase; Delta(14)-sterol reductase; Delta-14-SR; DHCR14A; ERG24_HUMAN; NET47; Putative sterol reductase SR 1; Putative sterol reductase SR-1; Sterol C14 reductase; Sterol C14-reductase; TM7SF2; Transmembrane 7 superfamily member 2. |
| Organism Species: | Rabbit |
| Clonality: | Polyclonal |
| React Species: | Human,Mouse,Rat,Cow,Rabbit,Sheep, |
| Applications: | WB=1:500-2000ELISA=1:500-1000IHC-P=1:400-800IHC-F=1:400-800IF=1:100-500 (Paraffin sections need antigen repair) not yet tested in other applications. optimal dilutions/concentrations should be determined by the end user. |
| Molecular weight: | 46kDa |
| Cellular localization: | cytoplasmic |
| Form: | Lyophilized or Liquid |
| Concentration: | 1mg/ml |
| immunogen: | KLH conjugated synthetic peptide derived from human TM7SF2/DHCR14A:51-150/418 |
| Isotype: | IgG |
| Purification: | affinity purified by Protein A |
| Storage Buffer: | 0.01M TBS(pH7.4) with 1% BSA, 0.03% Proclin300 and 50% Glycerol. |
| Storage: | Store at -20 °C for one year. Avoid repeated freeze/thaw cycles. The lyophilized antibody is stable at room temperature for at least one month and for greater than a year when kept at -20°C. When reconstituted in sterile pH 7.4 0.01M PBS or diluent of antibody the antibody is stable for at least two weeks at 2-4 °C. |
| PubMed: | PubMed |
| Product Detail: | Involved in the conversion of lanosterol to cholesterol.Expressed in adult heart, brain, pancreas, lung, liver, skeletal muscle, kidney, ovary, prostate, and testis, but not |

detected in placenta, spleen, thymus, small intestine, colon (mucosal lining), or peripheral blood leukocytes.

Function:

Involved in the conversion of lanosterol to cholesterol.

Subcellular Location:

Microsome membrane; Multi-pass membrane protein (By similarity). Endoplasmic reticulum membrane; Multi-pass membrane protein.

Tissue Specificity:

Expressed in adult heart, brain, pancreas, lung, liver, skeletal muscle, kidney, ovary, prostate, and testis, but not detected in placenta, spleen, thymus, small intestine, colon (mucosal lining), or peripheral blood leukocytes.

Similarity:

Belongs to the ERG4/ERG24 family.

SWISS:

O76062

Gene ID:

7108

Database links:

[Entrez Gene: 7108](#)Human

[Entrez Gene: 73166](#)Mouse

[Entrez Gene: 293688](#)Rat

[Omim: 603414](#)Human

[SwissProt: O76062](#)Human

[SwissProt: Q71KT5](#)Mouse

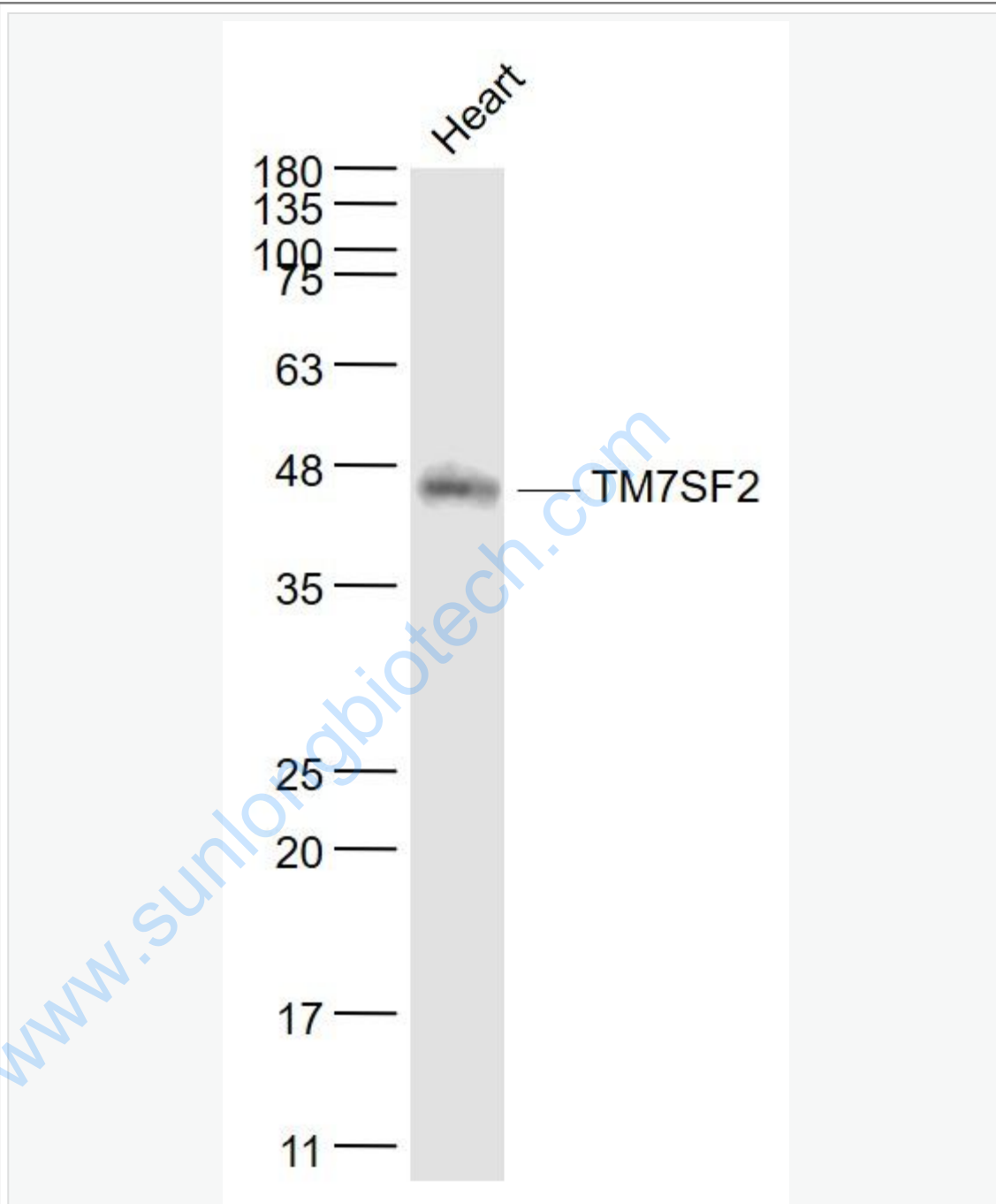
[Unigene: 31130](#)Human

[Unigene: 489613](#)Mouse

Important Note:

This product as supplied is intended for research use only, not for use in human, therapeutic or diagnostic applications.

Picture:



Sample:

Heart (Mouse) Lysate at 40 ug

Primary: Anti- TM7SF2 (SL4221R) at 1/1000 dilution

Secondary: IRDye800CW Goat Anti-Rabbit IgG at 1/20000 dilution

| | |
|--|-----------------------------------|
| | <p>Predicted band size: 46 kD</p> |
|--|-----------------------------------|

| | |
|--|----------------------------------|
| | <p>Observed band size: 46 kD</p> |
|--|----------------------------------|

www.sunlongbiotech.com