



Rabbit Anti-VLDL Receptor antibody

SL4228R

Product Name:	VLDL Receptor
Chinese Name:	极低密度Lipoprotein受体抗体
Alias:	Very low density lipoprotein receptor; VLDL R; VLDLR; VLDL-R; VLDLRCH.
Organism Species:	Rabbit
Clonality:	Polyclonal
React Species:	Human,Mouse,Rat,Chicken,Dog,Pig,Cow,Rabbit,
Applications:	WB=1:500-2000ELISA=1:500-1000 not yet tested in other applications. optimal dilutions/concentrations should be determined by the end user.
Molecular weight:	93kDa
Cellular localization:	The cell membrane
Form:	Lyophilized or Liquid
Concentration:	1mg/ml
immunogen:	KLH conjugated synthetic peptide derived from human VLDL Receptor:551-650/873<Extracellular>
Lsotype:	IgG
Purification:	affinity purified by Protein A
Storage Buffer:	0.01M TBS(pH7.4) with 1% BSA, 0.03% Proclin300 and 50% Glycerol.
Storage:	Store at -20 °C for one year. Avoid repeated freeze/thaw cycles. The lyophilized antibody is stable at room temperature for at least one month and for greater than a year when kept at -20°C. When reconstituted in sterile pH 7.4 0.01M PBS or diluent of antibody the antibody is stable for at least two weeks at 2-4 °C.
PubMed:	PubMed
Product Detail:	VLDL (very low density lipoprotein) cholesterol is one of the three major types of cholesterol found in blood. VLDL receptor plays an essential role in triglyceride metabolism. It binds VLDL and transports it into cells by endocytosis. In order to be internalized, the receptor-ligand complexes must first cluster into clathrin coated pits. Binding to Reelin induces tyrosine phosphorylation of Dab1 and modulation of Tau phosphorylation.

Function:

Binds VLDL and transports it into cells by endocytosis. In order to be internalized, the receptor-ligand complexes must first cluster into clathrin-coated pits. Binding to Reelin induces tyrosine phosphorylation of Dab1 and modulation of Tau phosphorylation (By similarity).

Subunit:

Binds to the extracellular matrix protein Reelin. Interacts with VLDLR. Interacts with SNX17. Interacts with DAB1. Receptor for the minor-group human rhinoviruses (HRVs); binds protein VP1 through the second and third LDL-receptor class A domains.

Subcellular Location:

Membrane; Single-pass type I membrane protein. Membrane, clathrin-coated pit; Single-pass type I membrane protein.

Tissue Specificity:

Abundant in heart and skeletal muscle; also ovary and kidney; not in liver.

Post-translational modifications:

Ubiquitinated at Lys-839 by MYLIP leading to degradation.

DISEASE:

Defects in VLDLR are the cause of cerebellar ataxia mental retardation and dysequilibrium syndrome type 1 (CMARQ1) [MIM:224050]; also known as dysequilibrium syndrome (DES) or non-progressive cerebellar disorder with mental retardation. CMARQ1 is a congenital, non-progressive cerebellar ataxia associated with disturbed equilibrium, delayed ambulation, mental retardation and cerebellar hypoplasia. Additional features include short stature, strabismus, pes planus and, rarely, seizures.

Similarity:

Contains 3 EGF-like domains.
Contains 8 LDL-receptor class A domains.
Contains 6 LDL-receptor class B repeats.

SWISS:

P98155

Gene ID:

7436

Database links:

[Entrez Gene: 7436](#)Human

[Entrez Gene: 22359](#)Mouse

[Entrez Gene: 25696](#)Rat

[Omid: 192977](#)Human

[SwissProt: P98155](#)Human

[SwissProt: P98156](#)Mouse

[SwissProt: P98166](#)Rat

[Unigene: 370422](#)Human

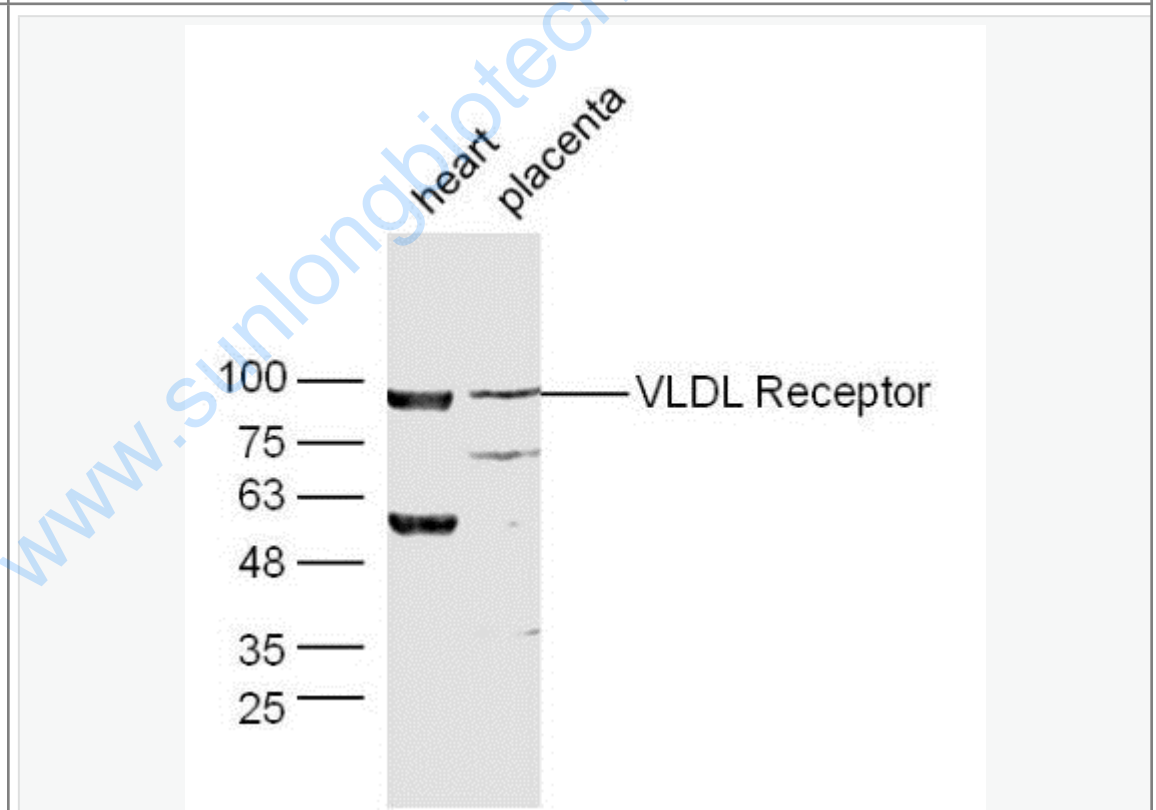
[Unigene: 4141](#)Mouse

[Unigene: 9975](#)Rat

Important Note:

This product as supplied is intended for research use only, not for use in human, therapeutic or diagnostic applications.

Picture:



Sample:

Heart (Mouse) Lysate at 40 ug

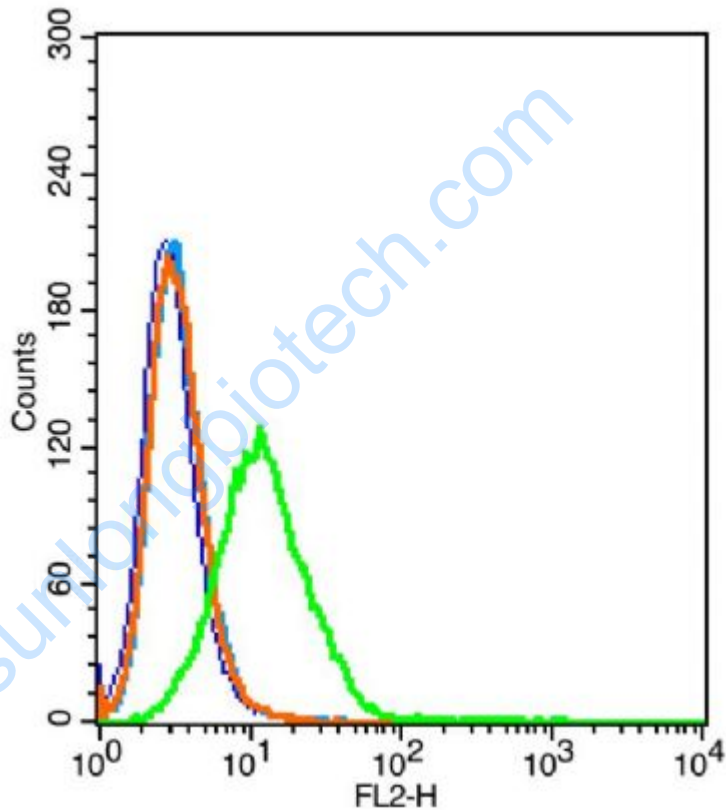
Placenta (Mouse) Lysate at 40 ug

Primary: Anti-VLDL Receptor (SL4228R) at 1/300 dilution

Secondary: HRP conjugated Goat-Anti-rabbit IgG (SL4228R) at 1/5000 dilution

Predicted band size: 93kD

Observed band size: 93kD



Blank control: 293T(blue).

Primary Antibody:Rabbit Anti-VLDL Receptor antibody(SL4228R), Dilution: 5 μ g in 100 μ L 1X PBS containing 0.5% BSA;

Isotype Control Antibody: Rabbit IgG(orange) ,used under the same conditions);

Secondary Antibody: Goat anti-rabbit IgG-PE(white blue), Dilution: 1:200 in 1 X

	PBS containing 0.5% BSA.
--	--------------------------

www.sunlongbiotech.com